

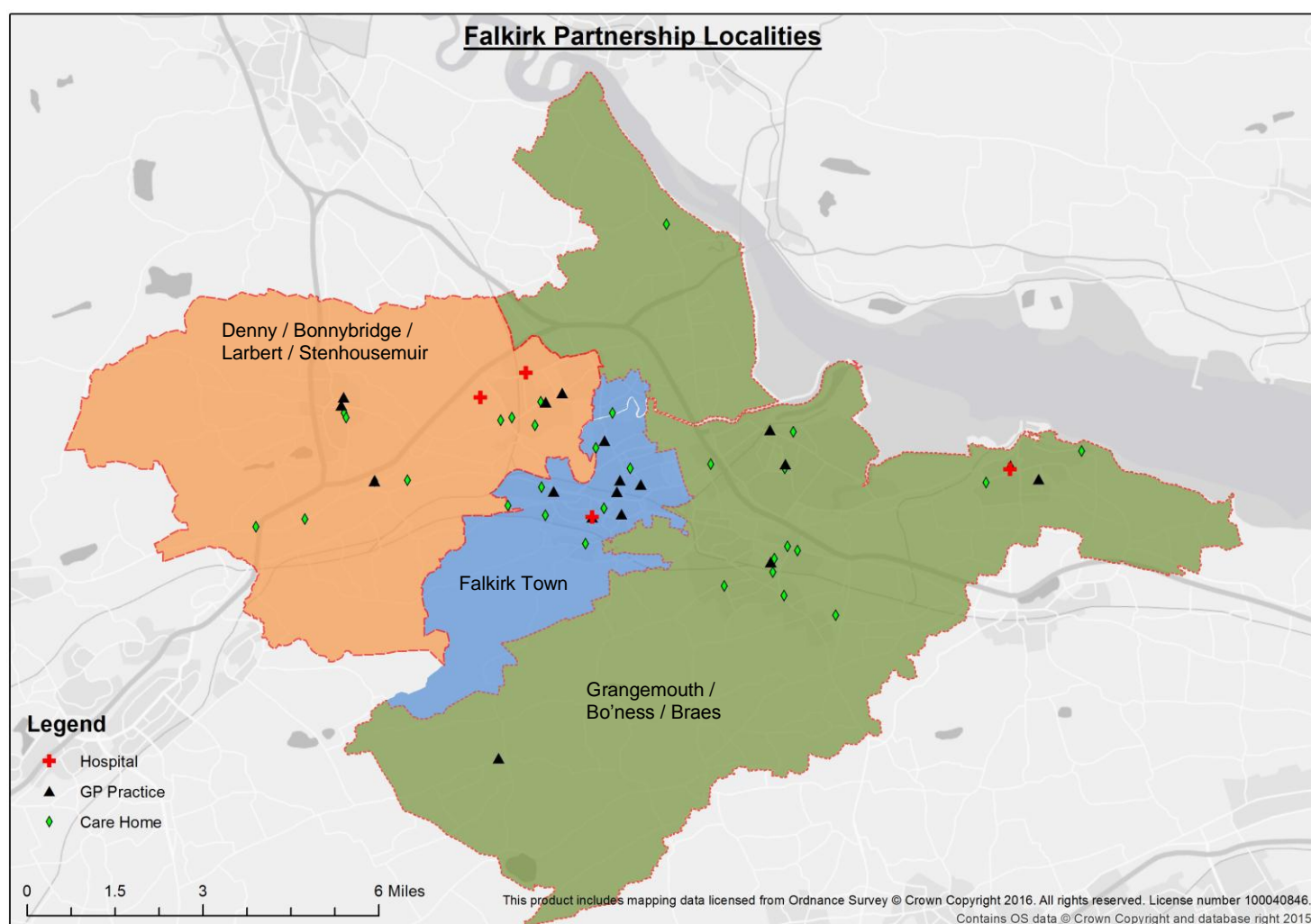
Falkirk Health & Social Care Partnership Locality Profiles



The Falkirk Health and Social Care partnership has identified 3 localities for strategic planning purposes.

What is this document designed to do?

This profile presents a 'picture' of current need and demand in the Localities. It is designed to inform discussion for the localities and further analysis will be undertaken to inform operational impact decisions and planning decisions for the future. This document is not intended to be an in-depth analysis of any specific topic, nor does it attempt to identify areas for prioritisation. It is hoped that the information presented in this profile used in conjunction with local knowledge can influence future analysis and ultimately the delivery of services in the localities



About the data

Data was gathered from a number of sources at Datazone (or Postcode) level and aggregated to locality level. Data is presented in a number of forms; counts, percentages, rates and ratios - information on how all this data was calculated is available in the accompanying methodology document. Indicators have been included where data was available and in all cases, the most recently available data has been used. Notes and caveats are displayed at the bottom of this table.

The shaded locality areas on the map correspond to the coloured columns in the data table below.

Indicators	Data Type	Grangemouth / Bo'ness / Braes	Falkirk Town	Denny / Bonnybridge / Larbert / Stenhousemuir	Falkirk Partnership	Scotland
EQUALITY INDICATORS						
Age - % aged over 65 ¹	%	18.2%	18.5%	16.4%	17.7%	18.0%
Gender - Male:Female Ratio ¹	Ratio	49:51	49:51	49:51	49:51	49:51
Ethnicity - % ethnic minority population ²	%	3.8%	5.8%	3.2%	4.2%	8.2%
Religion - % with religious beliefs ³	%	53.0%	53.0%	58.0%	54.0%	56.3%
% of those Married or in a Civil Partnership ⁴	%	50.6%	45.1%	52.4%	49.6%	45.0%
Sexual Identity (Gender Reassignment) ⁵		N/A	N/A	N/A	N/A	N/A
Sexual Orientation ⁵		N/A	N/A	N/A	N/A	N/A
Live Births - Rate per 1,000 population ⁶	Rate	10.7	10.5	10.6	10.6	10.5
Physical Disability - Rate per 1,000 ⁷	Rate	70.0	75.0	64.2	69.7	67.1
Learning Disability - Rate per 1,000 ⁷	Rate	3.9	5.3	5.6	4.8	5.0
Hearing or Visual Impairment ⁷	Rate	84.8	89.9	83.4	85.8	90.0
POPULATION						
Population 0-15 years ¹	Count	11,668	7,469	9,141	28,278	-
Population 16-49 years ¹	Count	28,893	19,963	20,994	69,850	-
Population 50-64 years ¹	Count	13,418	8,591	9,542	31,551	-
Population 65-74 years ¹	Count	6,798	4,356	4,575	15,729	-
Population 75-84 years ¹	Count	3,959	2,814	2,429	9,202	-
Population 85+ years ¹	Count	1,229	1,002	799	3,030	-
Total Population ¹	Count	65,965	44,195	47,480	157,640	-
Population Per Hectare ⁸	Rate	3.8	13.8	5.2	5.3	-
Dwellings Per Hectare (2012) ⁹	Rate	1.8	6.7	2.3	2.5	-
Urban/Rural - % living in an Urban Area ¹⁰	%	80.8%	92.8%	98.0%	89.4%	-
Urban/Rural - % living in a Small Town ¹⁰	%	0.0%	7.2%	0.0%	2.0%	-
Urban/Rural - % living in a Rural Area ¹⁰	%	19.2%	0.0%	2.0%	8.6%	-
Dependency Ratio ¹	Rate	55.9	54.8	55.5	55.5	58.0
LIFE CIRCUMSTANCES						
Adults claiming incapacity benefit/severe disability allowance ¹¹	%	4.6%	5.9%	4.2%	4.8%	5.1%
Population income deprived ¹²	%	12.0%	15.5%	11.0%	12.7%	13.1%
Working age population employment deprived ¹³	%	11.9%	14.9%	11.1%	12.5%	12.2%
Working age population claiming out-of-work benefits ¹⁴	%	11.5%	14.3%	10.1%	11.9%	12.0%
People living in 15% most 'access deprived' areas ¹⁵	%	12.8%	3.4%	9.7%	9.2%	15.0%
Single adult dwellings ¹⁶	%	36.8%	42.7%	33.1%	37.5%	37.5%
LIFESTYLE & RISK FACTORS						
Drug-related Hospital Stays ¹⁷	Rate	50.1	101.4	66.3	69.8	122.0
Alcohol Related Hospital Stays ¹⁸	Rate	493.6	654.0	424.0	517.6	671.7
Deaths from alcohol conditions ¹⁹	Rate	16.3	*	*	23.1	30.0

(*) indicates values that have been suppressed due to the potential risk of disclosure

(-) is applied to denote that a direct Scotland Comparator is either unavailable or deemed to be extraneous.

Indicators	Data Type	Grangemouth / Bo'ness / Braes	Falkirk Town	Denny / Bonnybridge / Larbert / Stenhousemuir	Falkirk Partnership	Scotland
GENERAL HEALTH						
Dementia - QOF Rate ²⁰	Count	437	506	452	1395	7.8
Dementia - Alzheimer's Scotland Estimated Prevalence (65+) ²¹	Count	958	718	607	2283	-
Asthma QOF Rate ²⁰	Rate	64.6	64.7	67.9	65.8	63.3
COPD QOF Rate ²⁰	Rate	19.0	25.2	23.9	22.7	22.1
CHD QOF Rate ²⁰	Rate	42.1	49.5	43.2	44.9	41.4
Heart Failure QOF Rate ²⁰	Rate	7.0	7.6	9.1	8.0	8.2
Diabetes QOF Rate ²⁰	Rate	48.0	53.2	49.8	50.3	48.5
Stroke & TIA QOF Rate ²⁰	Rate	21.5	23.7	22.4	22.5	21.6
Cancer QOF Rate ²⁰	Rate	23.1	24.1	21.7	22.9	23
Cancer Early Deaths Rate (Per 100,000 Pop.) ²²	Rate	169.4	172.4	161.0	152.5	154.6
Mental Health QOF Prevalence Rate ²⁰	Rate	7.1	10.5	7.7	8.4	8.8
Depression QOF prevalence rate ²⁰	Rate	73.0	78.7	69.5	73.6	62.8
Patients with a psychiatric hospitalisation (Per 100,000 Pop.) ²³	Rate	229.1	355.7	250.6	270.4	291.5
SERVICE PROVISION						
Number of GP Practices ²⁴	Count	10	7	9	26	-
Number of GP's per 1,000 population ²⁵	Rate	0.8	0.7	0.9	0.8	0.9
Average ime to get to a GP surgery (drive time) ²⁶	Time (Mins)	4.0	2.5	3.3	3.4	-
Average time to get to a GP surgery (public transport) ²⁶	Time (Mins)	10.9	7.3	8.3	9.1	-
Patients with emergency hospitalisations - Rate per 100,000 pop. ²⁷	Rate	6940	7699	6712	7054	7500
Patients (65+) with multiple emergency hospitalisations - Rate per 100,000 pop. ²⁸	Rate	4669	5337	4456	4840	5160
Discharge Rate per 1,000 Pop - Patients (65+) admitted with a fall ²⁹	Rate	19.4	22.0	16.5	19.4	20.5
Delayed discharges - Total Bed Days Occupied in 2015 ³⁰	Count	5084	3696	3383	12163	-
Delayed discharges - Average Delay (Days) ³¹	Count	31.8	28.4	34.5	31.3	-
Delayed discharges - Bed days occupied (Rate per 1,000 pop.) ³²	Rate	96.3	103.5	90.9	96.8	-
Number of Care Homes ³³	Count	14	9	12	35	-
% of last 6 months spent at home or in a community setting ³⁴	%	91.4%	90.3%	91.0%	91.0%	90.8%
People receiving Telecare services (incl. Community Alarm) - Rate per 1,000 people ³⁵	Rate	30.0	41.5	28.8	32.9	23.0
People receiving Care at Home - Rate per 1,000 people ³⁶	Rate	13.8	19.0	13.3	15.1	-
Community Care Assessments - Rate per 1,000 people ³⁷	Rate	26.9	35.9	25.8	29.1	-

(*) indicates values that have been suppressed due to the potential risk of disclosure

(-) is applied to denote that a direct Scotland Comparator is either unavailable or deemed to be extraneous.

Indicators	Data Type	Grangemouth / Bo'ness / Braes	Falkirk Town	Denny / Bonnybridge / Larbert / Stenhousemuir	Falkirk Partnership	Scotland
CARERS						
% of People who provide unpaid care - 0-19 hours ³⁸	%	5.5%	4.8%	5.3%	5.2%	5.2%
% of People who provide unpaid care - 35+ hours ³⁹	%	3.5%	3.4%	3.4%	3.4%	3.3%
HOUSING						
Number of Private Housing adaptations (2011-2013) ⁴⁰	Count	175	74	70	319	-
Number of Council Housing Adaptations (2012/13 - 2014/15) ⁴¹	Count	160	181	97	438	-
Number of Sheltered Accommodation Properties ⁴²	Count	37	42	12	91	-
Number of Housing with Care Properties (Level 1) ⁴³	Count	0	81	0	81	-
Number of Housing with Care Properties (Level 2) ⁴⁴	Count	196	283	160	639	-
Number of Housing with Care Properties (Level 3) ⁴⁵	Count	199	273	241	713	-
% of properties in Council Tax band A ⁹	%	34.2%	35.8%	19.5%	30.5%	-
% of properties in Council Tax band A - C ⁹	%	66.2%	72.8%	58.2%	65.9%	-
% of properties in Council Tax band F-H ⁹	%	9.5%	8.1%	13.4%	10.2%	-

(*) indicates values that have been suppressed due to the potential risk of disclosure

(-) is applied to denote that a direct Scotland Comparator is either unavailable or deemed to be extraneous.

Notes & Caveats

1. Midyear population estimates 2014 – National records for Scotland
2. Ethnicity – Ethnic minority population - % of population who are not White (Scottish), White (British) or White (Irish) – Derived from Scotland Census 2011 populations.
3. Religion - % with religious beliefs (Total Population minus those with no religious beliefs and those who did not state a religion). Derived from Scotland Census 2011 population.
4. Those married and those who are living in a registered same-sex civil partnership (or co-habiting) as a percentage of the population aged 16 years or older – Census 2011.
5. There is currently no robust data collection of Information on Sexual orientation, and Sexual Identity of the Scottish population. There is limited data available (very small sample size) for Sexual Orientation at a local authority level but no figures are available for locality profiling.
6. Live Births – Presented as a Crude Rate (per 1,000 population) – “Live birth: a child which at birth, having been completely expelled, shows signs of life or breathes”.
<http://www.nrscotland.gov.uk/statistics-and-data/statistics/statistics-by-theme/vital-events/general-publications/vital-events-reference-tables/2014/section-3-births>
7. Scotland's Census 2011 - National Records of Scotland (Table QS304SC - Long-term health conditions). Crude rates per 1,000 population. Note: Hearing or visual impairment includes blindness, impaired sight, deafness and impaired hearing.

8. Population per hectare derived from National records of Scotland Population estimates 2014 and area (hectares) by datazone from the Scottish Assessors' Association's Assessors' Portal data (2014).
9. Dwellings per hectare derived from Scottish Assessors' Association's Assessors' Portal data (2014) (<http://www.nrscotland.gov.uk/statistics-and-data/statistics/statistics-by-theme/households/household-estimates/small-area-statistics-on-households-and-dwellings>)
10. Urban/Rural Classification - Scottish Government 6-fold Urban Rural Classification 2013/14. % of population living in each category (see methodology document for how these figures were calculated). (<http://www.gov.scot/Topics/Statistics/About/Methodology/UrbanRuralClassification>)
11. Number and percentage of all adults aged 16+ claiming incapacity benefit/severe disability allowance (SDA) or employment and support allowance (ESA) – 2014 data.
12. Percentage of total population classified as income deprived within SIMD income domain (SIMD 2012) – 2014 data.
13. Percentage of working age population classified as employment deprived within SIMD income domain (SIMD 2012) – 2014 data.
14. Percentage of working age population claiming 'key out of work benefits'. This is a combined count of claimants on Jobseeker's Allowance (JSA), Employment and Support Allowance (ESA), Incapacity Benefit (IB) or Severe Disablement Allowance ('Incapacity benefits'), Income Support with a child under 16 or no partner Lone parent and other Income Support (including IS Disability Premium) or Pension Credit with each person being counted only once (2014).
15. Percentage of population living in 15% most 'access deprived' areas (2001 Data Zones) in Scotland, based on ISD population-weighted SIMD (SIMD 2012) – Population data from NRS (2014).
16. Percentage of dwellings subject to a Council Tax discount of 25 per cent. This may include, for example, dwellings with a single adult, dwellings with one adult living with one or more children, or with one or more adults who are 'exempted' for Council Tax purposes (NRS 2014).
17. General acute inpatient & day case stays with a diagnosis of drug misuse in any diagnostic position; 3-year rolling average number and directly age-sex standardised rate per 100,000 population (ISD Scotland (SMR01, Linked Database)). 2011-2013 data.
18. General acute inpatient and day case stays with a diagnosis of alcohol misuse in any diagnostic position: number and directly age-sex standardised rate per 100,000 population (ISD Scotland (SMR01, Linked Database)) 2014/15.
19. Alcohol related deaths (underlying cause): 5-year rolling average (2010-2014) number and directly age-sex standardised rate per 100,000 population (NRS).
20. QOF DATA - Data source: ISD QOF Database, as at 29th June 2015 plus notifications of adjustments from NHS Boards. Totals may still be subject to further revisions locally. QOF Prevalence data presented as Rate per 1,000 GP register population.
21. Estimated dementia prevalence per locality based on NRS 2014-based datazone population estimates and the EuroCode dementia prevalence rates (Alzheimer Europe (2009) *EuroCoDe: prevalence of dementia in Europe* <http://www.alzheimer-europe.org/index.php?lm3=CEE66BE91B37>). Age 65+ population only.
22. Early deaths from cancer (under 75s); 3-year rolling average (2012-2014) number and directly age-sex standardised rate per 100,000 population (NRS).
23. Patients discharged from psychiatric hospitals: 3-year rolling average (2011-2013) number and directly age-sex standardised rate per 100,000 population. (Note - Patients are counted only once per year).

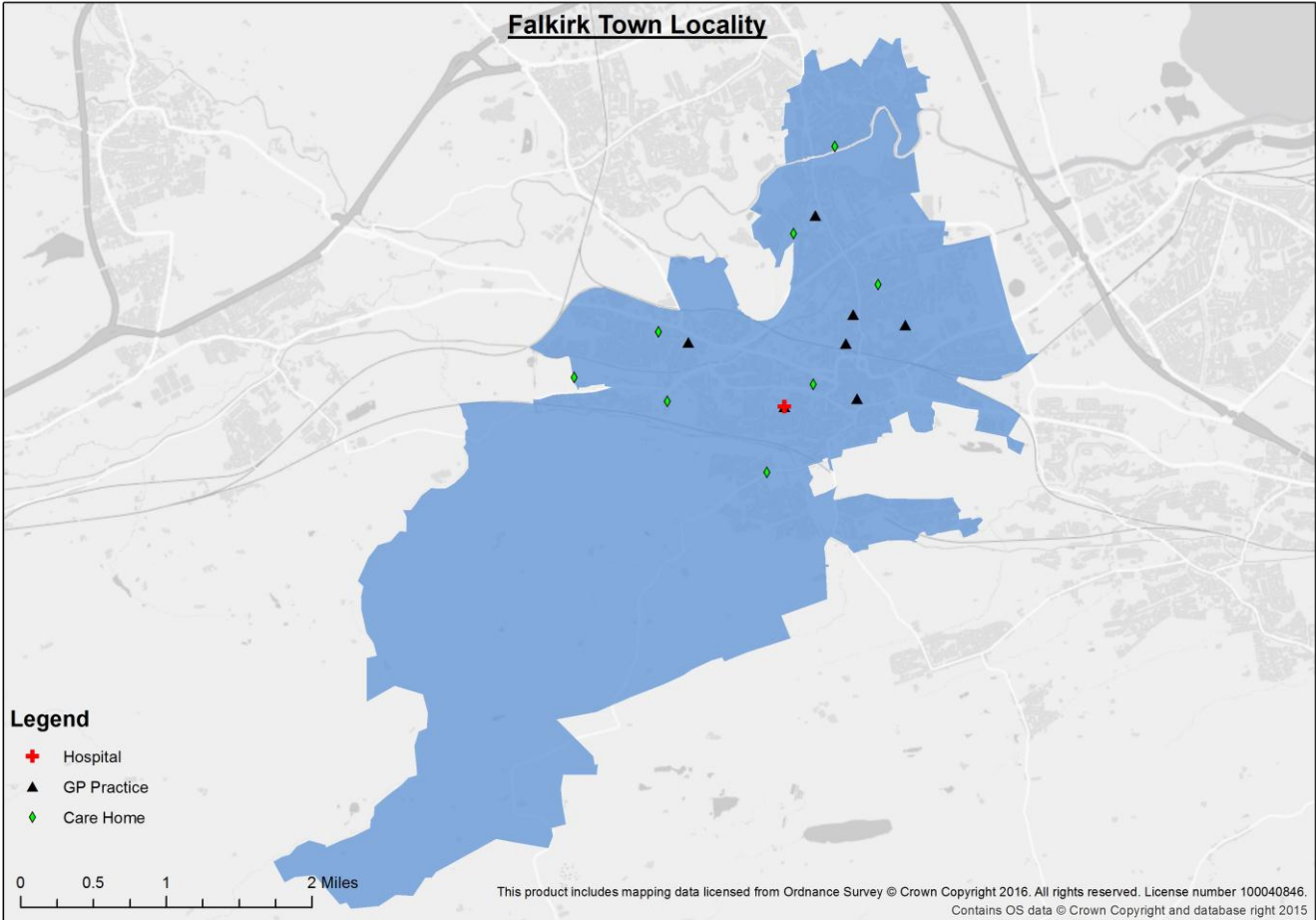
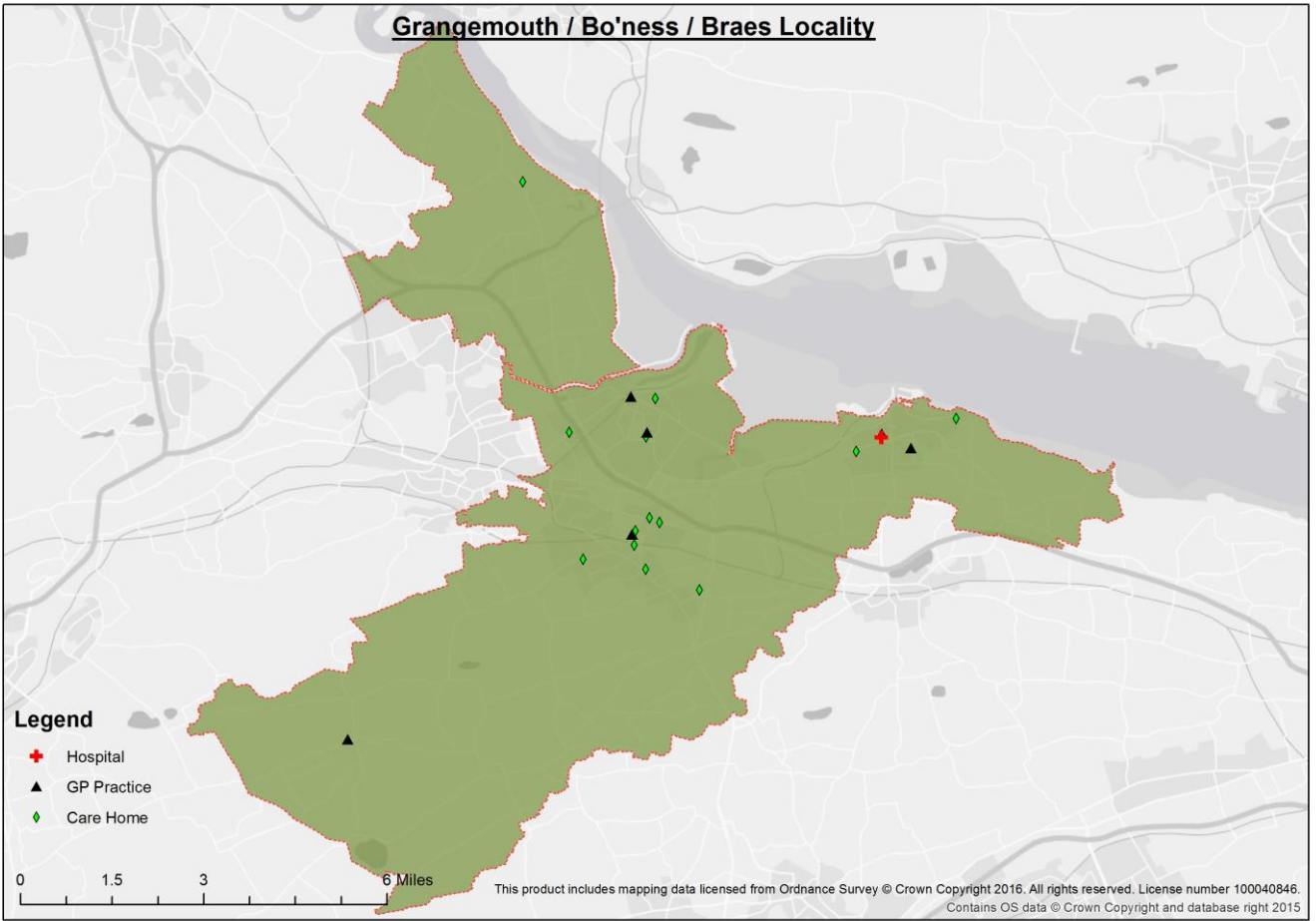
24. ISD Scotland – General Practice and their Patient populations. GP practices were assigned to localities by matching their postcode to datazone.
<http://www.isdscotland.org/Health-Topics/General-Practice/Workforce-and-Practice-Populations/Practices-and-Their-Populations/> - Correct as at 1st January 2016.
25. ISD Scotland – GPs and Other Practice Workforce. Calculated GP headcount per 1,000 population (NRS 2014). <http://www.isdscotland.org/Health-Topics/General-Practice/Workforce-and-Practice-Populations/Workforce/>
26. Statistics.Gov.Scot – Travel times to key services by car or public transport. The methodology for generating average drive times to services involves generating drive times for each Census Output Area and then calculating a population weighted average for each Data Zone. For this indicator 2012 data was used. The times presented in the table are an average of all datazones which make up that locality.
27. Patients discharged from hospital following an emergency admission: 3-year rolling average (2011-2013) number and directly age-sex standardised rate per 100,000 population. (Note - Patients who are counted in different LA may only be counted once for the NHS Board) (ISD Scotland (SMR01, Linked Database)).
28. Patients aged 65+ years with 2 or more emergency hospital admissions, discharged from hospital: 3-year rolling average (2011-2013) number and directly age-sex standardised rate per 100,000 population. (Note - A patient will be counted as multiple admission only if they resided in the same geography during both admissions) (ISD Scotland (SMR01, Linked Database))
29. Discharge rate per 1,000 population for those aged 65 and over admitted with a fall (2014/15). Extracted from ISD SMR01 database and rate calculated with NRS mid-year population estimate 2014.
30. Total Bed days occupied by delayed discharges for Falkirk residents between 1st Jan – 31st Dec 2015. Data extracted from EDISON system at patient level and postcode of residence used to assign to localities (postcode matched to Datazone). Bed days occupied is the number of days from the date 'ready for discharge' to the date of discharge. Total bed days occupied was calculated by summing bed days occupied for all patients in the locality.
31. The average delay for delayed discharge patients in Falkirk (1st Jan – 31st Dec 2015) was calculated by dividing the total bed days occupied by the number of delayed discharges.
32. Crude rate per 1,000 population (18+ population – NRS 2014) of total bed days occupied by delayed discharges for Falkirk residents (1st Jan – 31st Dec 2015).
33. Numbers of Care homes from ISD/Care Home Inspectorate (2015). (The Scottish Care Home Census is collected on an annual basis and covers all adult care home establishments that are registered with the Care Inspectorate).
34. ISD Scotland (SMR01 and NRS Death Records). This measure has been calculated by subtracting the number of bed days spent in an acute hospital setting in the 6 months prior to death from the maximum number of bed days a patient could have spent in hospital in the 6 months prior to death (182.5 days) – Data extract July 2014.
35. Rate per 1,000 population of people (not properties) in receipt of some of a Telecare service, that being either a basic community alarm or a more advanced full Telecare package that goes beyond a community alarm. This data is extracted from the Social Care Survey return 2014/15.
36. Rate per 1,000 population of people receiving Home Care service in 2014/15. The figure includes all clients in receipt of Home Care during 2014/15 from the local authority, private providers or a voluntary service. (Note: this can include personal and non-personal care). This data is extracted from the Social Care Survey return 2014/15.

37. Number of people who have received a community care assessment (or review) during 2014/15 – presented as a rate per 1,000 population. This data is extracted from the Social Care Survey return 2014/15.
38. Number of people who provide between 0-19 hours unpaid care as a percentage of the total census population (Census 2011). Calculated using datazone level data from the 2011 Scotland Census.
39. Number of people who provide over 35 hours unpaid care as a percentage of the total census population (Census 2011). Calculated using datazone level data from the 2011 Scotland Census.
40. Number of housing adaptations carried out by owner occupiers in the 3 years 2011-2013. Includes various types of adaptations including stair lifts, wet room floors and level access adaptations. Data from Falkirk Council Housing Department.
41. Number of housing adaptations carried out by Falkirk Council (on Council properties) in the 3 years 2012/13 – 2014/15. Includes various types of adaptations including stair lifts, wet room floors and handrail adaptations. Data from Falkirk Council Housing Department.
42. Number of supported accommodation properties. Numbers extracted from Falkirk Council Records Stock Sheet (February 2016) and includes both general supported accommodation and homeless supported accommodation properties. These properties are provided by Key, Ark, Loretto and Kingdom Housing Associations.
43. Number of Level 1 Housing with Care properties (All Tenures – Council, RSL and Private) in Locality at time of Data extract (February 2016). Figures taken from Falkirk Council Records Stock Sheet. Level 1 Housing with Care is the highest level of HwC properties and offers meals prepared on site and served in a communal dining room (over and above the level 2 features - individual houses or flats with enhanced security systems, a communal lounge, laundry facilities, CCTV, and lifts).
44. Number of Level 2 Housing with Care properties (All Tenures – Council, RSL and Private) in Locality at time of Data extract (February 2016). Figures taken from Falkirk Council Records Stock Sheet. Level 2 Housing with Care is the intermediate level of HwC properties and includes individual houses or flats with enhanced security systems, a communal lounge, laundry facilities, CCTV, and lifts.
45. Number of Level 3 Housing with Care properties (All Tenures – Council, RSL and Private) in Locality at time of Data extract (February 2016). Figures taken from Falkirk Council Records Stock Sheet. Level 3 Housing with Care is the lowest level of HwC properties and includes individual houses or flats with enhanced security systems such as the MECS Mobile Emergency Care Service.

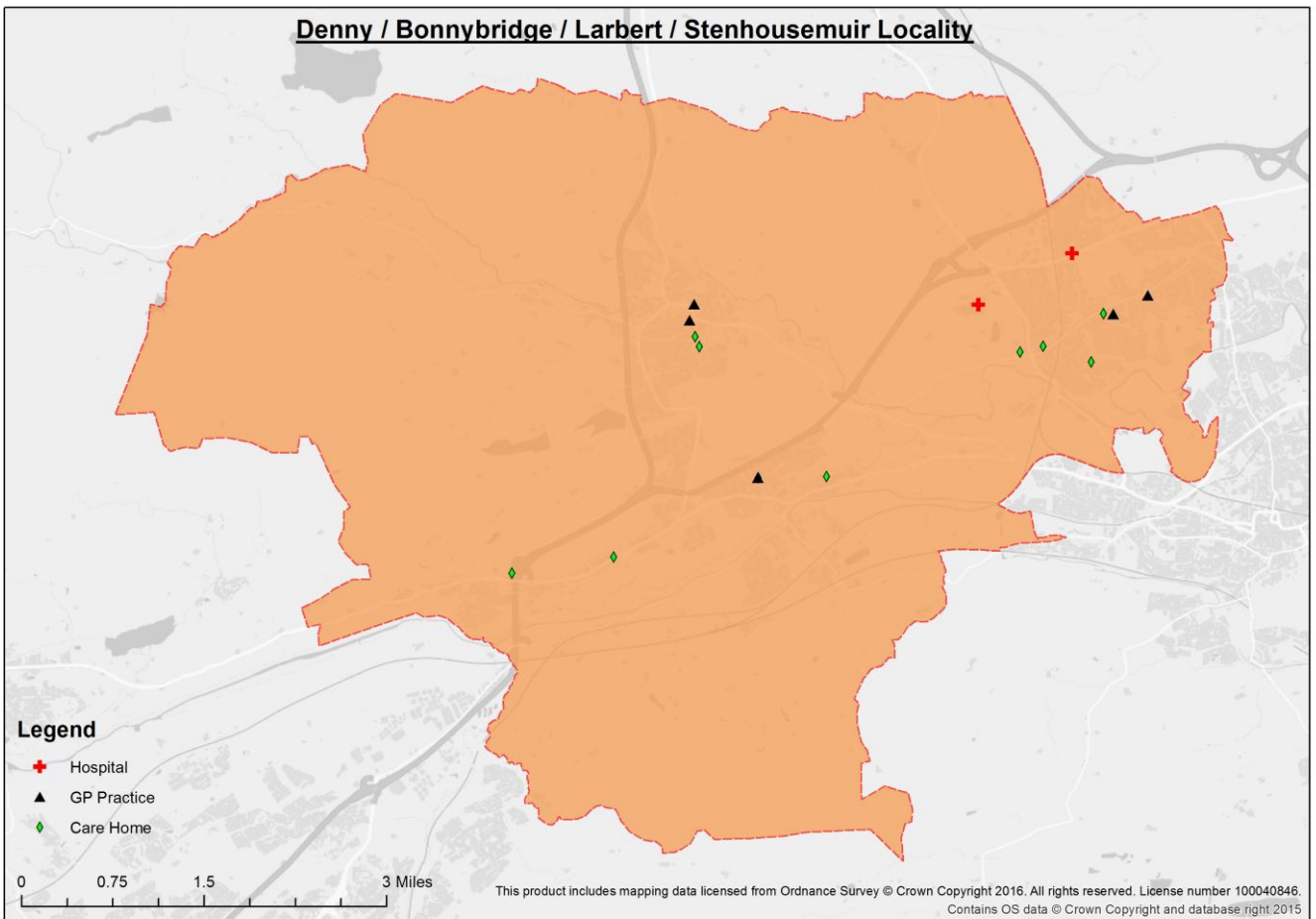
Methodology

An accompanying methodology document details how the localities were defined, summarises the data sources and explains how rates and figures we're calculated. Additionally there is further information on the limitations of the data.

Locality Maps



Denny / Bonnybridge / Larbert / Stenhousemuir Locality



DRAFT