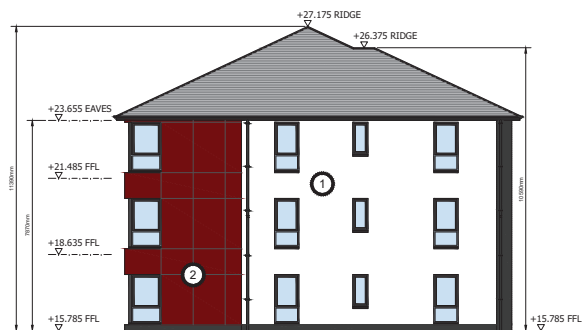


Notes	Rev	Description	Date	By
	A	Levels, eave & ridge heights added	12.11.2020	CP
	B	Dimensions added from ground floor level to eave & ridge heights	13.11.2020	CP

THORNHILL ROAD, FALKIRK BLOCK A - ELEVATIONS



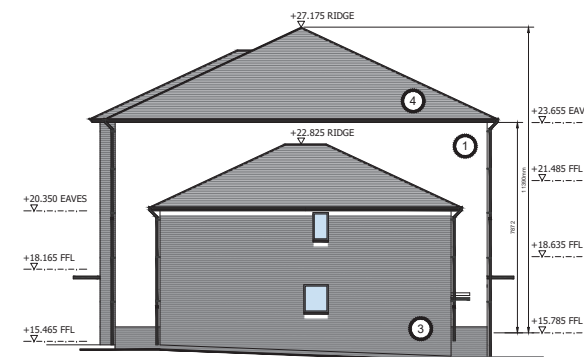
BLOCK A - SOUTH WEST



BLOCK A - NORTH WEST



BLOCK A - SOUTH EAST



BLOCK A - NORTH EAST

PROPOSED MATERIALS:

- ① SMOOTH RENDER (WHITE)
- ② ROCKPANEL WOODS CLADDING (CHERRY)
- ③ FACING BRICK (ANTHRACITE GREY)
- ④ CONCRETE TILE ROOF (ANTHRACITE GREY)
- ⑤ PV PANELS FLUSH WITH ROOF TILES (SIZE & NO. TBC)
- UPVC WINDOWS & DOORS (GREY FRAME EXTERNALLY)
- UPVC GUTTERS & DOWNPIPES (BLACK)

Notes	Rev	Description	Date	By
	A	Levels, eave & ridge heights added	12.11.2020	CP
	B	Dimensions added from ground floor level to eave & ridge heights	13.11.2020	CP

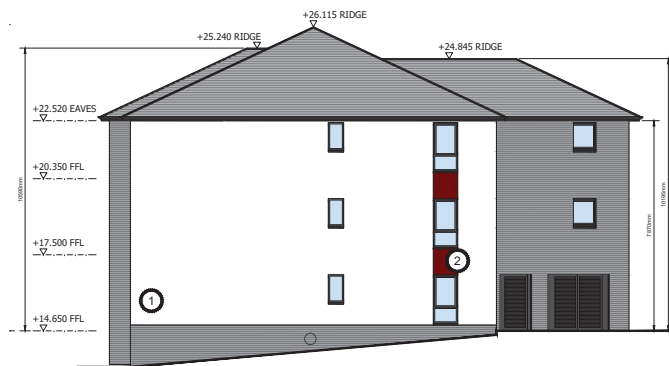
THORNHILL ROAD, FALKIRK BLOCK B - ELEVATIONS



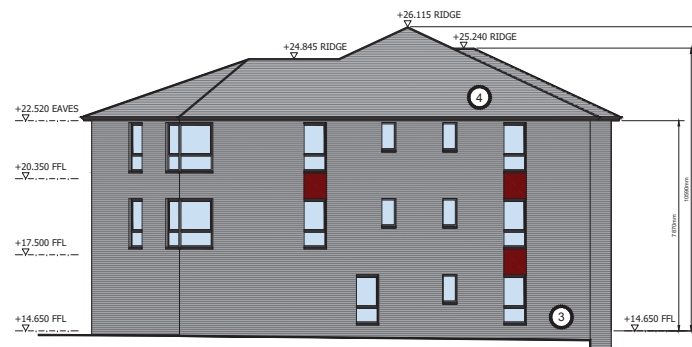
BLOCK B - NORTH WEST



BLOCK B - SOUTH EAST



BLOCK B - NORTH EAST



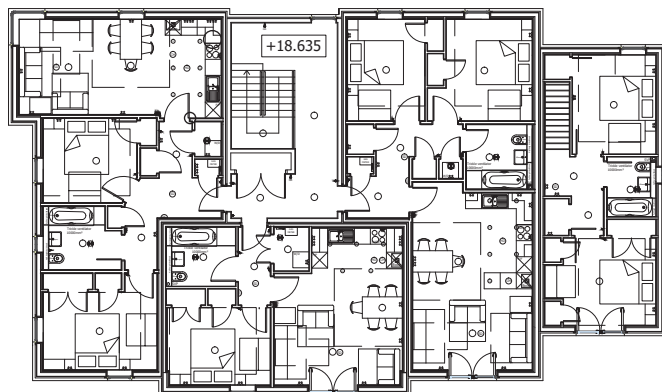
BLOCK B - SOUTH WEST

PROPOSED MATERIALS:

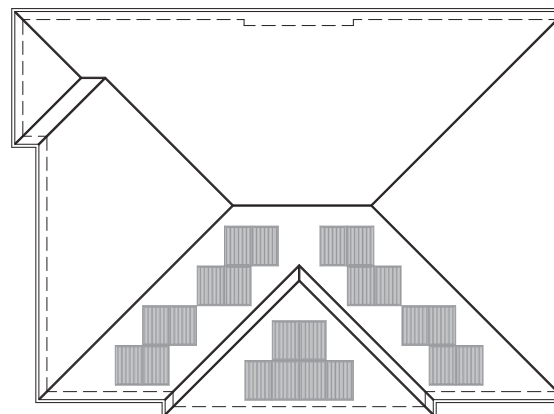
- ① SMOOTH RENDER (WHITE)
 - ② ROCKPANEL WOODS CLADDING (CHERRY)
 - ③ FACING BRICK (ANTHRACITE GREY)
 - ④ CONCRETE TILE ROOF (ANTHRACITE GREY)
 - ⑤ PV PANELS FLUSH WITH ROOF TILES (SIZE & NO. TBC)
- UPVC WINDOWS & DOORS (GREY FRAME EXTERNALLY)
- UPVC GUTTERS & DOWNPIPES (BLACK)

Notes	Rev	Description	Date	By
	A	Floor levels added	12.11.2020	CP

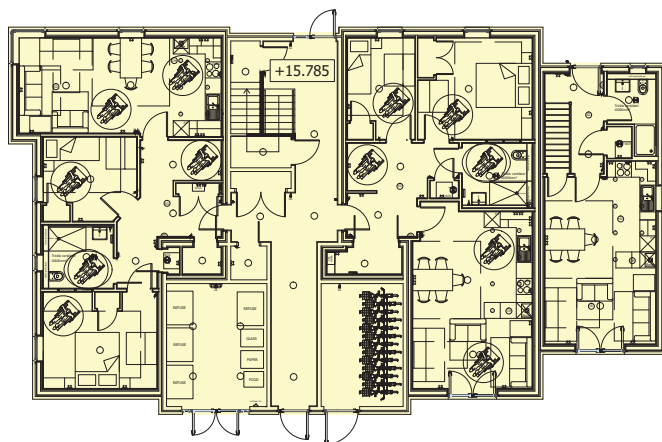
THORNHILL ROAD, FALKIRK BLOCK A - PLANS



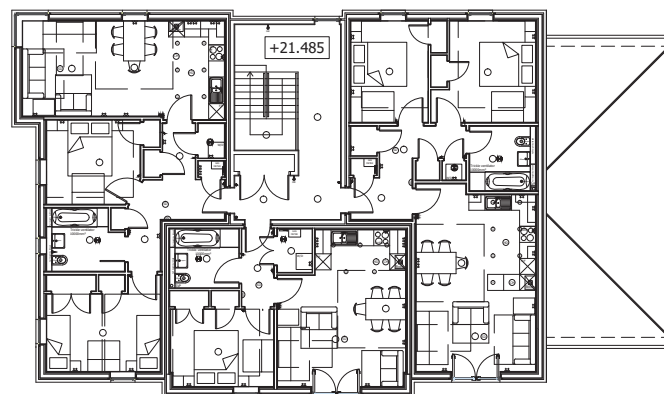
FIRST



ROOF



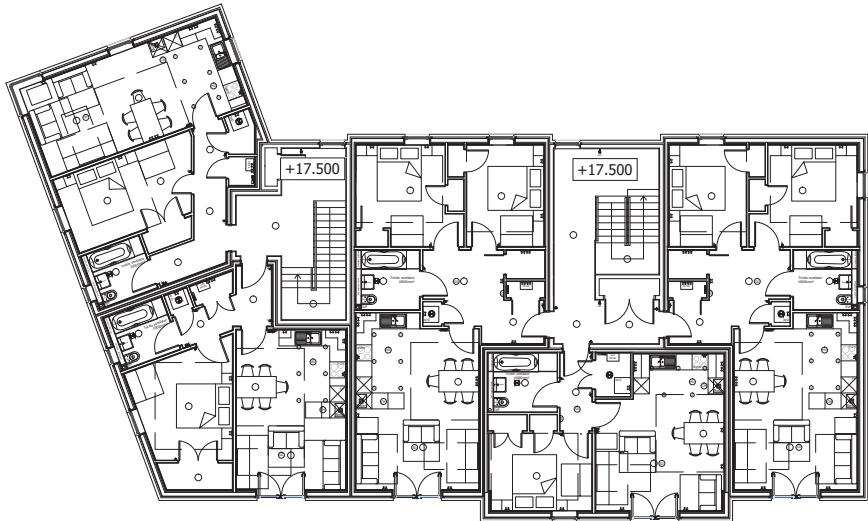
GROUND



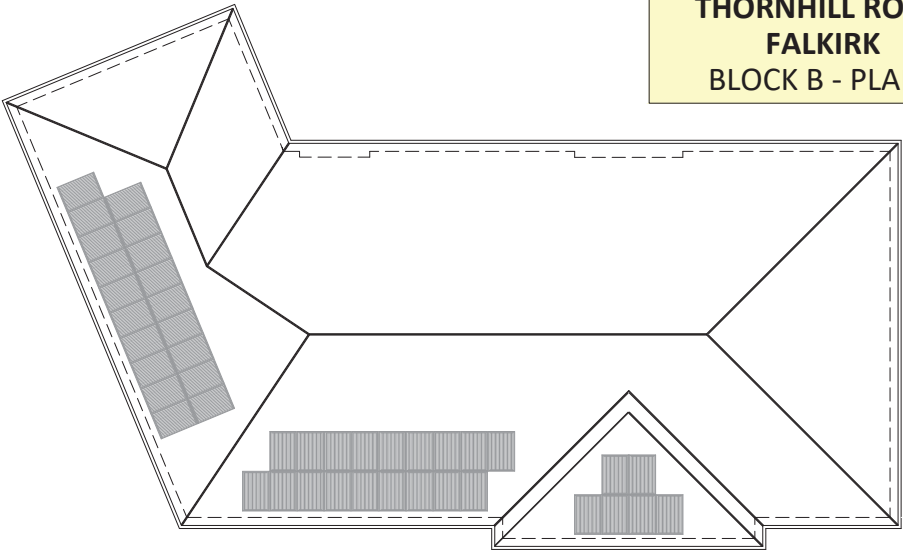
SECOND

Notes	Rev	Description	Date	By
	A	Floor levels added	12.11.2020	CP

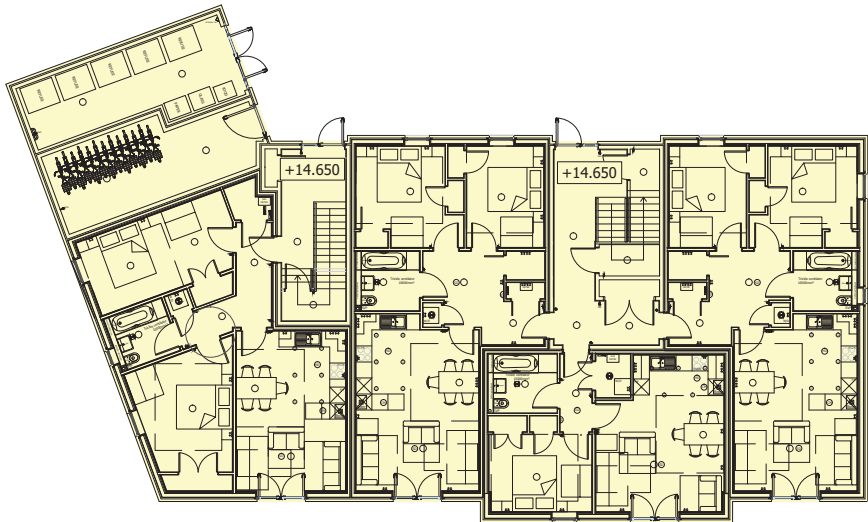
**THORNHILL ROAD,
FALKIRK
BLOCK B - PLANS**



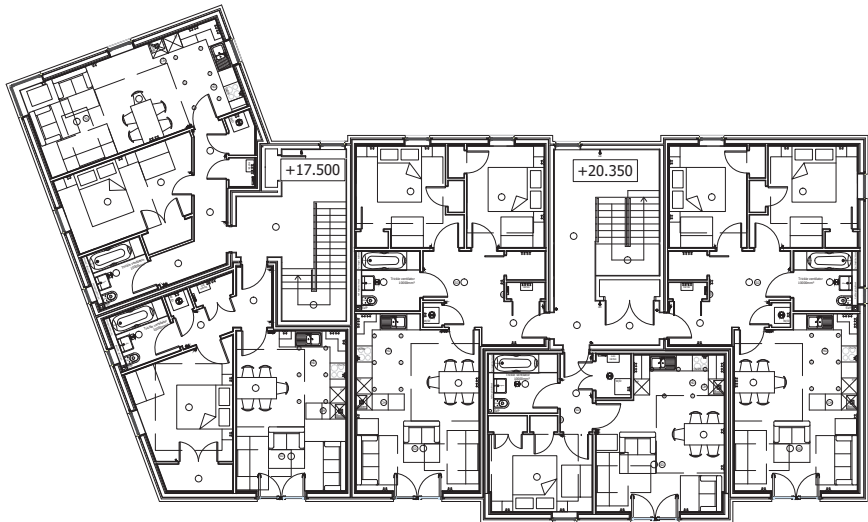
FIRST



ROOF



GROUND



SECOND

