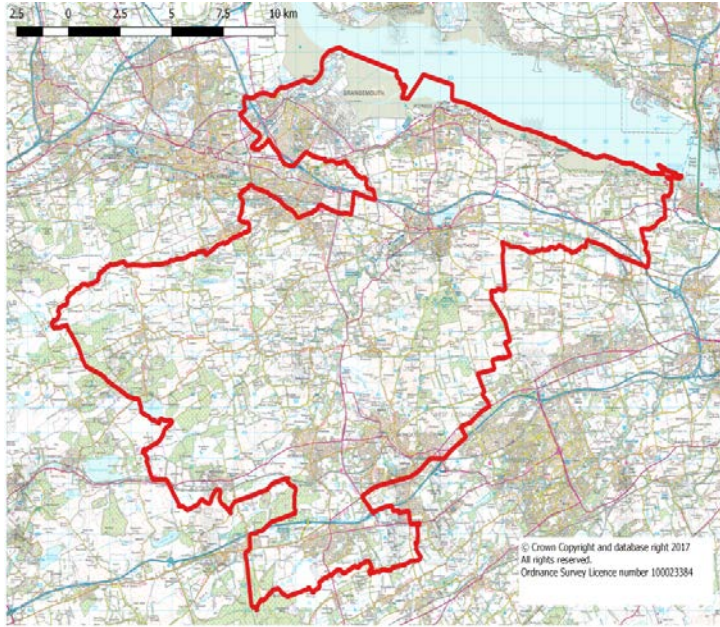


Linlithgow and East Falkirk Westminster Parliamentary Constituency



Insight

This insight presents key findings of the Linlithgow and East Falkirk County Constituency for the Westminster Parliamentary Elections in 2017.

Basic facts

Area (hectares)	28,480
Total population (2015)	115,279
Population density	3.0
Number of houses	50,621
Number of households	51,177
Average household size	1.7
Vacancy rate	2.6%
Forecast electorate	86,087
Unemployment rate	2.2%

Population by age 2015

Linlithgow & East Falkirk		
	No	
0 - 4	7,215	
5-15	14,968	
16 - 19	5,165	
20 - 24	6,319	
25-44	30,514	
45-59	25,310	
60 - 64	6,428	
65-74	11,042	
75-84	6,394	
85+	1,923	
Total	115,279	
	%	Scotland
0 - 4	6.3%	5.5%
5-15	13.0%	11.6%
16 - 19	4.5%	4.7%
20 - 24	5.5%	6.9%
25-44	26.5%	25.7%
45-59	22.0%	21.6%
60 - 64	5.6%	5.9%
65-74	9.6%	10.0%
75-84	5.5%	6.0%
85+	1.7%	2.1%
Total	100.0%	

Every year the National Records of Scotland (NRS) publish estimates of the population in each Local Authority area in Scotland. The estimates for 2015 were published on 28th April 2016.

Dwellings by council tax band 2015

Band	Linlithgow & East Falkirk		Scotland
	No	%	%
A	15,594	29.3%	21.3%
B	13,925	26.1%	23.3%
C	5,813	10.9%	16.1%
D	5,155	9.7%	13.2%
E	6,523	12.2%	13.2%
F	4,145	7.8%	7.5%
G and H	2,144	4.0%	5.3%
Total	53,299		

Dwellings 2015

	Linlithgow & East Falkirk		Scotland
	No	%	%
Occupied	51,037	96.9%	96.0%
Vacant	1,363	2.6%	2.9%
Second Homes	281	0.5%	1.1%
Occupied dwellings Exempt from paying council tax	476	0.9%	2.8%
Single Adult c tax discount percentage of occupied	19,474	38.2%	39.1%
Total	52,683		

Dwellings by type 2014

	Linlithgow & East Falkirk		Scotland
	No	%	%
Flat	15,500	29.4%	37.9%
Terraced	12,910	24.5%	20.6%
Semi Detached	12,303	23.3%	19.8%
Detached and unknown	12,045	22.8%	21.8%
Total	52,757		

Dwellings by room number 2014

	Linlithgow & East Falkirk		Scotland
	No	%	%
1 room	174	0.3%	1%
2 rooms	4,917	9%	12%
3 rooms	16,027	30%	29%
4 rooms	15,109	29%	27%
5 rooms+ and rooms unknown	16,531	31%	30.9%
	-	-	-

Unemployment November 2016

	Linlithgow & East Falkirk		Scotland
	No.	%	%
Working age population (16-64)			
Males	1,080	2.9%	3.4%
Females	550	1.5%	1.5%
Total	1,630	2.2%	2.4%

Youth unemployment (16-24)

	Linlithgow & East Falkirk		Scotland
	No.	%	%
Male	275	4.8%	4.0%
Female	140	2.4%	1.9%
Total	420	3.7%	3.0%

Benefit claimants May 2016

	Linlithgow & East Falkirk		Scotland
		%	%
Job Seekers		1.3%	1.5%
ESA and incapacity benefits		7.9%	7.9%
Lone Parents		1.0%	1.0%
Carers		1.7%	1.7%
Others on income related benefits		0.2%	0.2%
Disabled		0.8%	0.8%
Bereaved		0.2%	0.2%

Economic Activity

	Linlithgow & East Falkirk		Scotland
	No.	%	%
Economically Active	62,400	80.0%	76.8%
Economically Inactive (student, long term sick, family, retired)	15,200	20.0%	23.2%
Earnings by place of residence 2016 (gross wk pay)		£546.00	£536.60
Out of Work benefits Claimant Count (March 2017)	1,630	2.2%	2.4%

For further information:

Falkirk Council
 Performance and Intelligence Team
 Corporate and Housing Services
 Municipal Buildings
 Falkirk
 FK1 5RS
 Tel: 01324 506016
 Email: p&i@falkirk.gov.uk
 Website: www.falkirk.gov.uk

Source:

Benefits, Unemployment, Employment
<https://www.nomisweb.co.uk/query>
 Population, Dwellings and Household Estimates
<http://www.nrscotland.gov.uk/statistics-and-data/>