

## PROFILE

- 30.1 The Loan is a small village forming a ribbon of development on the Avonbridge to Linlithgow Bridge road, close to the entrance to Muiravonside Country Park. The village is totally residential in character comprising mainly of attractive cottage style dwellinghouses. It contains no local services or community facilities.
- 30.2 The village was not identified as being capable of any significant growth in the previous local plan.

## KEY LOCAL ISSUES

- 30.3 The key issues for the village are:
- The need to retain the character and amenity of the village.

## LOCAL PLAN SUMMARY

- 30.4 The Local Plan proposes the following key provisions for the Loan:
- No further outward growth of the village.

## ENVIRONMENTAL QUALITY

- 30.5 The Loan lies within an Area of Great Landscape Value. The tree belts to the south of the village are covered by a Tree Preservation Order.

## SUSTAINING COMMUNITIES

### Housing

- 30.6 The small size of the Loan, its lack of basic services and infrastructure, its location within a Pipeline Consultation Zone and environmental constraints on its expansion indicate that it would be inappropriate to identify any growth opportunities.

### Recreation and Community Facilities

- 30.7 There are no services or community facilities within the village, although the amenities of Muiravonside Country Park are close by.

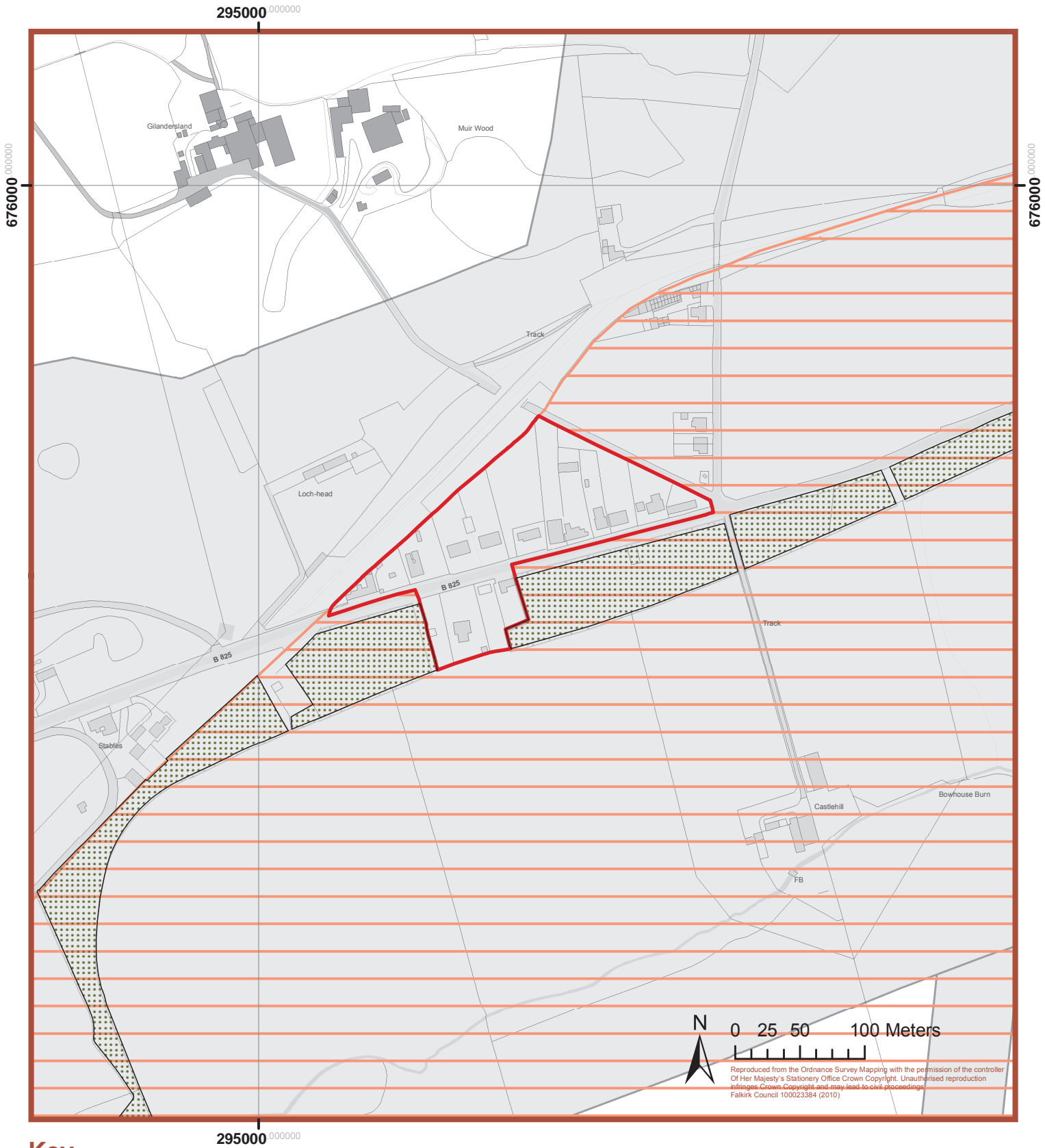
## ECONOMIC PROSPERITY

- 30.8 There is little potential for economic development in The Loan itself, although it does lie in close proximity to Muiravonside Country Park and the Union Canal, which in themselves have considerable potential for additional tourism development.

## SUSTAINABLE TRANSPORT & INFRASTRUCTURE



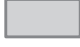

- 30.9 The Loan is not connected to the public sewer.
- 30.10 The Loan lies within a Pipeline Consultation Zone associated with the ethylene pipeline running south of the village. This places an additional health and safety constraint on development in parts of the village.

# The Loan



## Key

### Policies

-  Village Limit (EQ19)
-  Tree Preservation Order (EQ26)
-  Pipeline Consultation Zone (EP18)
-  Areas of Great Landscape Value (EQ23)