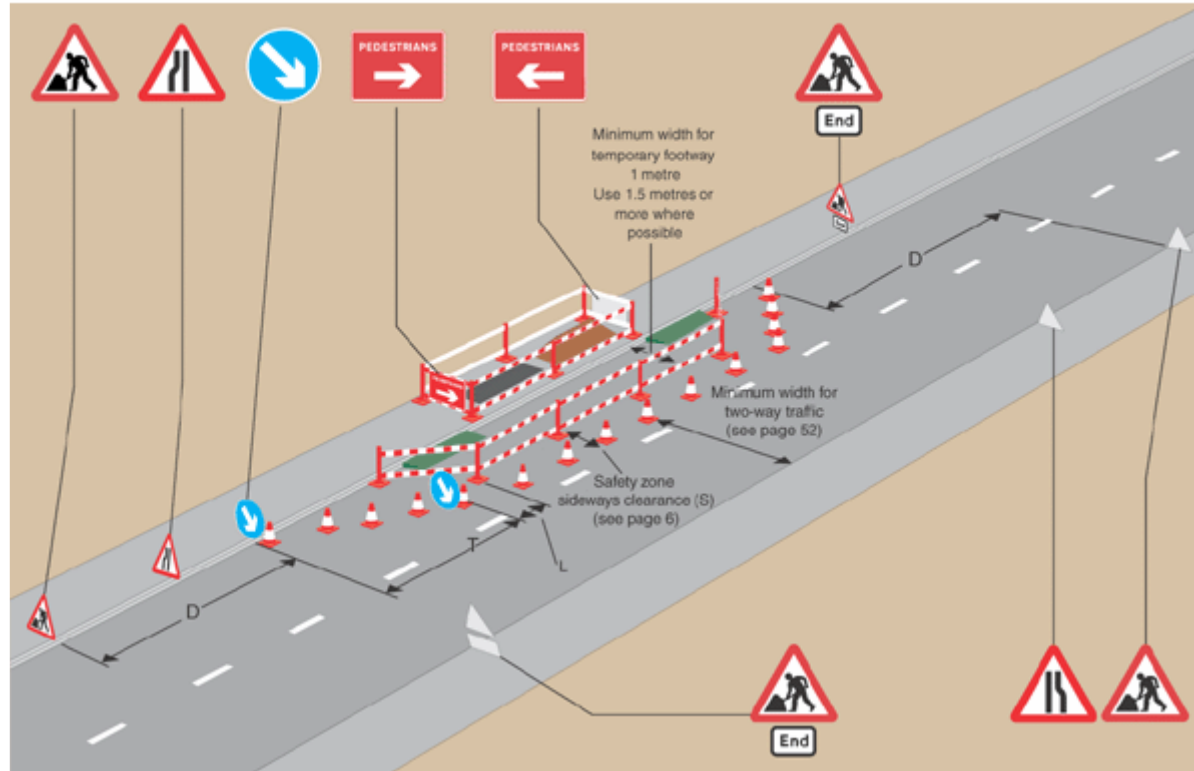


Works on footway with temporary footway in carriageway



Type of road	Minimum and normal maximum siting distance (D) of first sign in advance of lead-in taper (metres)	Minimum clear visibility to first sign (metres)	Minimum size of signs (mm)	Minimum height of cones (mm)	Sideways Safety Zone (S)	Details of lead-in cone tapers (but see Notes below) Recommended lengths	Width of hazard (metres) including Safety Zone (S)						
							1	2	3	4	5	6	7
Single carriageway road, restricted to 30mph or less	20 to 45	60	600	450	0.5m	Length of taper (T) in metres	13	26	39	52	65	78	91
	Minimum No. of cones					4	4	6	7	9	10	12	
	Minimum No. of lamps at night					3	3	5	6	8	9	11	
Single carriageway road, restricted to speeds of 31 to 40mph inclusive	45 to 110	60	750	450	0.5m	Length of taper (T) in metres	20	40	60	80	100	120	140
	Minimum No. of cones					4	6	8	10	13	15	17	
	Minimum No. of lamps at night					3	5	7	9	12	14	16	
All-purpose dual carriageway road, restricted to 40mph or less	110 to 275	60	750	450	0.5m	Length of taper (T) in metres	25	50	75	100	125	150	175
	Minimum No. of cones					4	7	10	13	15	18	21	
	Minimum No. of lamps at night					3	6	9	12	14	17	20	
Single carriageway road, with speed limit of 50mph or more	275 to 450	75	750	450	1.2m	Length of taper (T) in metres	25	50	75	100	125	150	175
	Minimum No. of cones					4	7	10	13	15	18	21	
	Minimum No. of lamps at night					3	6	9	12	14	17	20	
All-purpose dual carriageway road, with speed limit of 50mph or more	725 to 1600	105	1200	750	1.2m	Length of taper (T) in metres	32	64	96	128	160	192	224
	Minimum No. of cones					5	9	12	16	19	23	26	
	Minimum No. of lamps at night					4	8	11	15	18	22	25	

Speed limit (mph)	30 or less	40	50	60	70
Minimum longways clearance (L) metres	1/2	15	30	60	100

NOTES:

1. Lead-in tapers used with traffic control, and all exit tapers, shall be at about 45° to the kerb line with cones spaced 1.2 metres apart.
2. The maximum spacing distance of cones in longitudinal lengths of coning shall be 9 metres, but no fewer than 2 cones shall be used in any length between tapers.
3. In certain circumstances on congested roads with speed limits of 30mph or under, the taper may also be reduced to 45°