

**FALKIRK
PARTNERSHIP IN PRACTICE
SERVICES FOR PEOPLE WITH LEARNING DISABILITIES
AND THEIR CARERS**

**PROGRESS AND DEVELOPMENT PLAN
2007-2010**



Falkirk Council
Housing and Social Work

INTRODUCTION

This Falkirk Partnership in Practice Agreement (PiP) for 2007-2010 has been prepared by the Forth Valley Strategic Partnership group in collaboration with the Falkirk Local Action Group (FLAG). The Local Action Group is representative of health services, local authority services, the voluntary sector, advocacy services, service users and carers. The PiP contains a brief overview of the current structure and the services provided for people with learning disabilities who live in Falkirk, and their carers; it outlines some of the progress that has been made from the Partnership in Practice Agreement set out in 2004-2007. Other sources of reference include the Integrated Children's Services Plan, the Community Care Plan, the NHS Forth Valley Health Care Strategy and local Health Delivery Plan. The PiP is overseen by the Falkirk Community Health Partnership and Falkirk Council Housing & Social Work Services Committee.

Priorities are identified from the general trend of services and the Action Plans are set out in key topic areas. Progress and development will be monitored by the Forth Valley Partnership Learning Disability Care group and locally through the Falkirk Local Action Group (FLAG) and the Falkirk Community Health Partnership.

CONTENTS

Page

1	Overview.....	4
2	Structure Chart.....	6
3	Membership of Groups.....	7
4	Change Fund.....	8
5	Key Priorities.....	11
6	Action Plans.....	13

Appendices :

References and Contacts List.....	39
Glossary of Acronyms.....	40

1 OVERVIEW REPORT FOR THE FALKIRK PARTNERSHIP

Forth Valley Overview of Provisions

Based on recommendations from the 'Same as You' Review (2002), the Forth Valley Partnership Group set out the Partnership in Practice Agreement for 2004-2007 and has continued to oversee service developments across Forth Valley. NHS Forth Valley has been undergoing significant structural re-design across Acute and Primary Care sectors. Three Community Health Partnerships have been established across the Forth Valley Health Board area for Clackmannanshire, Falkirk and Stirling. A new acute general hospital is being built in Larbert scheduled for completion in 2009/10 with plans for a Community Hospital for Falkirk underway. Since the closure of the long stay specialist Royal Scottish National Hospital (RSNH) in 2003 the established new in patient facility for people with a Learning Disability for Forth Valley is Loch View (Larbert) providing assessment, treatment and rehabilitation. Community –based services for people with learning disabilities in each locality are within the remit of the Community Health Partnerships. Integrated Community Learning Disability Teams have been established with the local Falkirk Learning Disability Team (FLDT) providing multi-disciplinary intervention from the team membership of Community Learning Disability Nursing, Social Work, Occupational Therapy, Physiotherapy, Speech and Language Therapy, Dietetics, Art Therapy and Music Therapy. The FLDT works in partnership with the professions of Psychiatry and Clinical Psychology. Additional Support Team nurses are also available to support people who challenge, have additional mental health needs and/or offend.

Managed Care Network: Update

The regional Managed Care Network is established to coordinate and develop links, new initiatives, shared approaches to meeting needs and the development of some specialist resources. Priority is being given to the production of good quality and accessible information for service users and their carers. MCN subgroups for Autistic Spectrum Disorders and Severe Challenging Behaviours are collating data for joint commissioning. Training programmes for health workers and Acute Hospital Liaison schemes are being developed. A new Low Secure Unit at Lynebank Hospital is planned.

Local Authority and community based provisions:

Falkirk Council has 7 Locality Community Adult Assessment and Care Management Teams and an additional team based within the Acute General Hospital of Falkirk District Royal Infirmary (FDRI). These are generic community care teams providing the first point of contact for people including people with a learning disability and work closely with the FLDT. Falkirk Council and NHS Forth Valley have established integrated teams for learning disability and mental health. For learning disability there is one team covering the whole of the Falkirk Area, the Falkirk Learning Disability Team. This team is multidisciplinary with one team manager. The lead partner for the operational management of the team is Falkirk Council with health members of the team being attached to Falkirk Council operationally whilst retaining NHS Forth Valley terms and conditions. The Falkirk Learning Disability Team (FLDT) is currently based within FDRI.

The FLDT also works closely with the Children with Disabilities team based in Grangemouth and at present is involved in a review of the transition recommendations from “Smoothing the Transition.”

There are 3 integrated Mental Health teams covering the Falkirk area. The lead partner for the operational management is NHS Forth Valley and as such local authority members of staff are attached to NHS Forth Valley for their operational management whilst retaining Falkirk Council terms and conditions of employment.

In addition to the integrated health and social work service teams for mental health and learning disabilities there is a team based within the Sensory Centre, which is in partnership with NHS Forth Valley, Stirling Council, RNIB, RNID and Guide Dogs.

Day provisions include a range of activities including that are provided by the 3 Day Service Centres of Bainsford, Camelon and Oswald Avenue in Grangemouth. ASSET (Antonine Strategic Supported Employment) is a successful employment project established in partnership with Enable. The ASSET employment project was initially funded by ESF however is now being fully funded by Falkirk Council.

Falkirk Council’s Short Breaks Bureau (SBB) assists in arranging varied and flexible respite/short breaks for all service user needs including learning disability. The local authority provision of “The Rowans” is a 3 bedded resource offering short breaks to adults with a learning disability. A review is currently underway of the local provision with particular consideration for those people whose behaviour challenges services. A joint plan is being developed with NHS Forth Valley, the voluntary organisation PSS and Falkirk Council to increase service provision to adults whose behaviour challenges.

In Falkirk Council there is a range of supported and residential accommodation provided by housing associations, private and voluntary organisations.

Falkirk Local Action Group (FLAG)

The FLAG is currently meeting monthly and has representation from Falkirk Council, FV NHS, Advocacy, Day Services, Children Services, Carers and liaison link with service user self advocacy group. The Group shares information and monitors the progress and development of local services. Minutes from FLAG are distributed to and considered by the Falkirk Joint Future Management Group which in turn reports to the Falkirk Community Health Partnership Group, which links to the Forth Valley Adult Strategic Planning Group.

Consultation and Advocacy

Advocacy Services are provided locally by Advocacy into Action a service for adults with a learning disability and also for those with a dual diagnosis of learning disability and mental health. Also locally the Forth Valley Advocacy Service provides advocacy to all service user groups with a particular focus on older people and those people subject to the Mental Health (Care & Treatment)(Scotland) Act 2003.

Advocacy into Action provides a range of advocacy services including citizen advocacy, formal advocacy, crisis advocacy, a drop in service and support to a self advocacy group called “Speak Up.” Advocacy into Action also have a dual diagnosis worker whose

remit is to work with people who have a dual diagnosis of mental health and Learning Disability. Part of this post has dedicated time to work with people who are detained in Loch View under the Mental Health (Care and Treatment) (Scotland) Act 2003. Carers consultation meetings have been held led by the Disability Information Officer and the carer representative on FLAG.

Partnership Working and Integration

Good communication, along with integration across a wide range of possible supports and services, is a key priority for local partnerships, in order to meet the diverse needs of people with learning disabilities as far as possible within their communities. Local authority and health services have worked in partnership to produce the Single Shared Assessment document with the future aim to have accessible shared electronic information. There is a ratified Information Sharing Protocol with Forth Valley NHS and the 3 Local Authorities.

The existing partnership agreement for the joint funding of complex care services is currently being updated to include people with a learning disability.

The FLDT have close liaison links with Falkirk Council Housing and the Homelessness Service. There is representation from Falkirk Council Contracts and Commissioning team on the Learning Disability Resource Panel in addition to representation from Forth Valley NHS.

The Day Service provision of Bainsford and Grangemouth have a transition procedure with Carrongrange School, which is the local school providing an education service for children with specialist needs including a learning disability. All the 3 local day service provision and the employment project of ASSET have liaison links with Forth Valley College.

Further References

The Integrated Childrens Services Plan (FFB – For Falkirk Bairns) 2005 – 2008 sets out the full range of social care, health and education service priorities for children in Falkirk, including children who have disabilities and additional support needs.

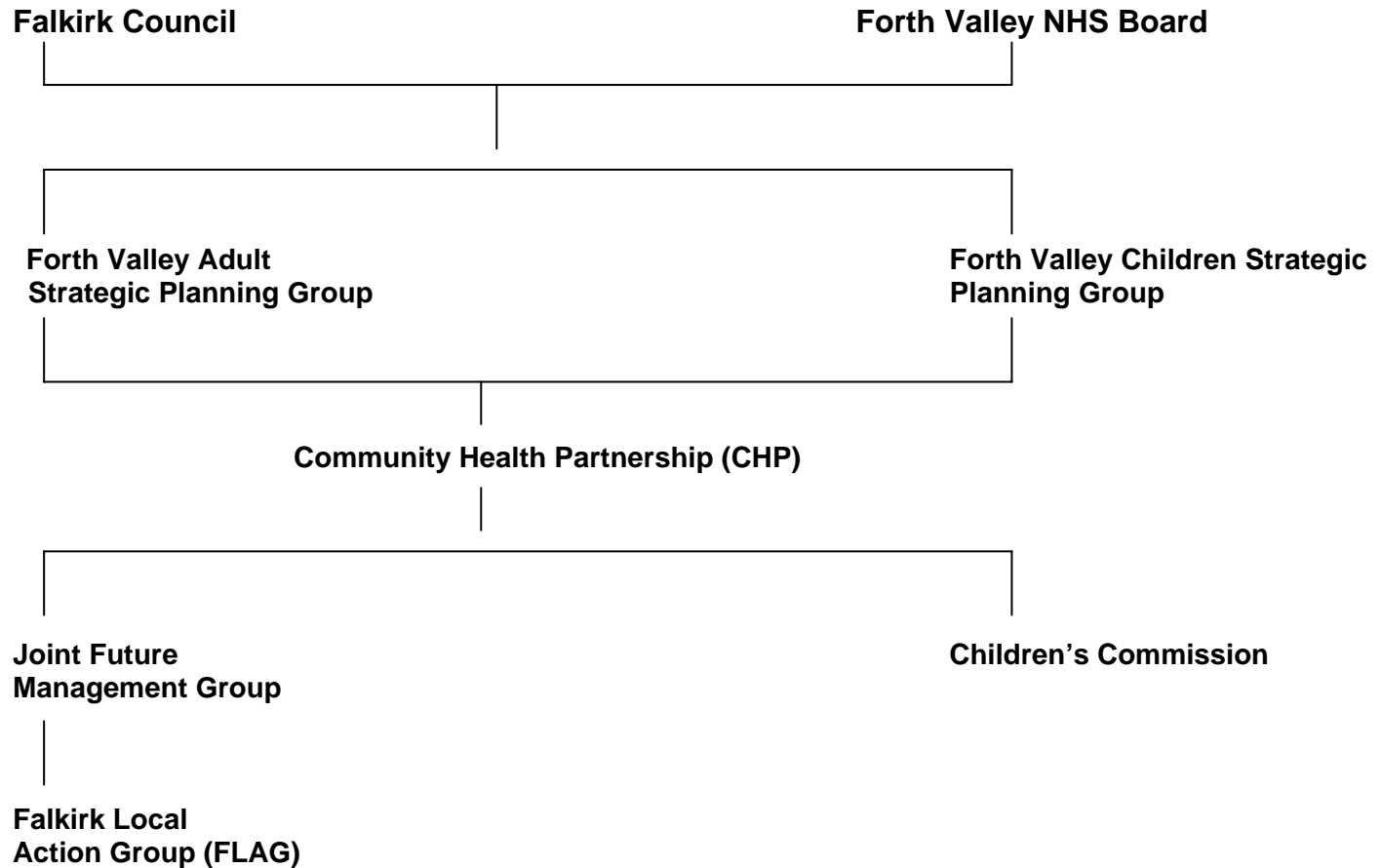
The Falkirk Community Care Services Plan provides further information about the wider picture of community care services.

The Falkirk Carers Strategy and Action Plan 2007 - 2010 identified priorities and plans for carers.

The NHS Forth Valley Health Care Strategy and Local Health Delivery Plan and the Joint Health Improvement Plan demonstrate the commitment to partnership working to improve health and maximise quality of life.

2 STRUCTURE CHART OF SERVICES AND LINKS IN FALKIRK FOR PEOPLE WITH LEARNING DISABILITIES

Organisational Chart – Adult Learning Disability Services (Falkirk)



3 MEMBERSHIP OF GROUPS

Forth Valley area-wide Learning Disability Partnership Care Group

Falkirk Community Health Partnership is the host area for Forth Valley area-wide services for people with learning disabilities, covering the three Council areas of Clackmannanshire, Falkirk and Stirling.

The Partnership Care Group is representative of Forth Valley Health and Local Authority Learning Disability Planning and Operational Managers, integrated learning disability services and the three Council area Community Health Partnerships.

Falkirk Local Action Group (FLAG)

Chair : Service Manager Community Care

Representation from:

Advocacy Services

Children with Disabilities Team

Falkirk Learning Disability Team

Learning Disability Care Group

Carers

Disability Information Service

Adult Day Services

Education Services

Liaison link with Service User Self Advocacy Group "Speak Up"

Employment Project ASSET

Locality Community Care Team

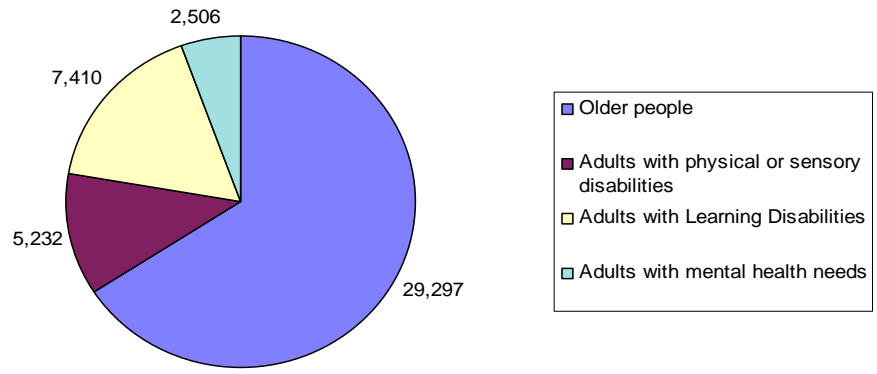
Community Care (Net) Spend – Adult Services

	£ Thousands
Older people	
Assessment and Care Management	2,881
Home care	10,038
Residential Care Homes	12,383
Day Care and Meals	658
Equipment and adaptations	501
Other	2,836
Total Older People)	29,297
Adults with physical or sensory disabilities	
Assessment and Care Management	1,071
Home care	1,009
Residential Care Homes	706
Day Care	721
Equipment and adaptations	186
Direct Payments	270
Other	1,269
Total Adults with physical or sensory disabilities	5,232
	Cont/

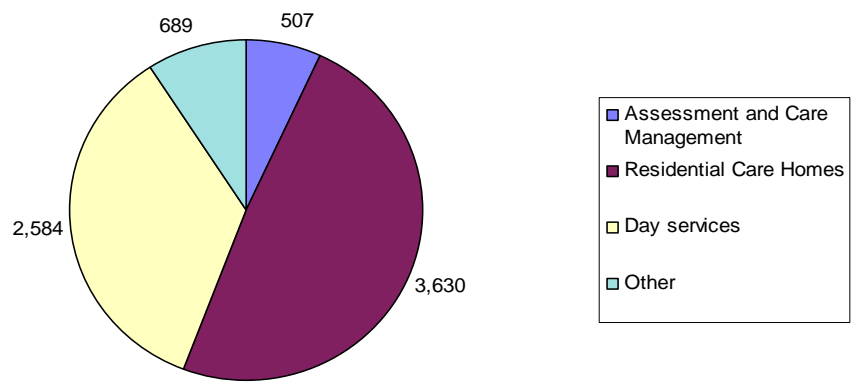
Adults with Learning Disabilities	£ Thousands
Assessment and Care Management	507
Residential Care Homes	3,630
Day services	2,584
Other	689
Total Adults with Learning Disabilities	7,410
Adults with mental health needs	
Assessment and Care Management	962
Accommodation-based services	358
Day services	535
Other	651
Total Adults with Mental Health Needs	2,506

Community care Groups Budget 2007/08	
Older people	29,297
Adults with physical or sensory disabilities	5,232
Adults with Learning Disabilities	7,410
Adults with mental health needs	2,506
	44,445

Community care Groups Budget 2007/08 £44.44m



Adults With Learning Disability budget 2007/08 £7.4m



5 KEY PRIORITIES

Partnership Working and Integration:

- Continuing to develop and enhance community-based services
- Improving information systems: sharing information. Providing information for people with learning disabilities and their carers
- Involving and consulting service users and carers
- Ensuring that people who have additional needs e.g. physical disability, sensory impairment, mental health problems, high support needs, challenging behaviour, offending behaviour, have access to a comprehensive range of appropriate services.

DAY PROVISIONS

- Reviewing day provisions with particular consideration for older people with a learning disability.
- Promoting Social Inclusion
- Extending education and employment opportunities

SUPPORTING CARERS

- Identifying the needs of older carers for future needs planning
- Review of respite/short breaks with particular reference to those people with a learning disability whose behaviour challenges services.

NEEDS ASSESSMENT

- Continue to develop actions on the outcome recommendations from the needs assessment completed by Stirling University
- Continue to implement the action plan from the audit undertaken following the recommendations from the SWSI and MWC reports on the Borders enquiry.
- Develop a baseline assessment tool for use with people who have a learning disability and dementia.

AUTISTIC SPECTRUM DISORDER

- Undertaking development work across Forth Valley for people in the Autistic Spectrum Disorder

WORKFORCE DEVELOPMENT

- Change Management, Joint training e.g. Vulnerable Adults/Support and Protection, Single Shared Assessment, Care Management , Risk Assessment.

KEY TOPIC AREAS

1 Advocacy	7 Direct Payments	13 Lifelong learning	18 Short Breaks/Respite
2 Autistic Spectrum Disorder	8 Dementia	14 Older People	19 Supported Living
3 Best value and Quality Standards	9 Employment	15 Parenting	20 Vulnerable Adults
4 Carers	10 Health Improvement and Improving Access to Health Services	16 Personal Centred Planning	21 Workforce development
5 Information Systems	11 Information	17 Service user involvement	
6 Day Services	12 Joint Commissioning		

ACTION PLANS

	KEY TOPIC	ACHIEVEMENTS/CURRENT POSITION	PROPOSED ACTION	LEAD	TIMESCALE
1	Advocacy	<p>Advocacy into Action provide citizen, formal, crisis and “drop in” advocacy services to people with a learning disability. Additionally a self advocacy group “Speak Up” has been established.</p> <p>A dual diagnosis post is funded to work with people who have a learning disability and mental illness.</p> <p>Forth Valley Partnership provides funding to the advocacy services of Advocacy into Action and Forth Valley Advocacy to provide a service to those people who have been detained under the Mental Health Act.</p> <p>Falkirk Children’s Rights Service established with Quarriers. Advocacy service for children and young people with a Children’s Rights Officer and Admin Support. Service available to all children.</p>	<p>1.1 Review arrangements and agree funding for Advocacy Services. Complete Joint Working Agreement for 2008 – 2010.</p> <p>1.2 Consolidate and strengthen liaison links between service user self advocacy group “Speak Up” and FLAG.</p> <p>1.3 Application to the “Big Lottery” for funding to set up advocacy Group for Young People with a learning disability</p>	<p>1.1 Service Manager, Falkirk Council.</p> <p>1.2 Service Manager, Falkirk Council</p> <p>1.3 Advocacy into Action</p>	<p>March 2008</p> <p>Ongoing</p> <p>2007/08</p>

	KEY TOPIC	ACHIEVEMENTS/CURRENT POSITION	PROPOSED ACTION	LEAD	TIMESCALE
2.	Autistic Spectrum Disorder (ASD)	<p>Funding Secured for a year for a Autistic Spectrum Disorder development worker To work across NHS Forth Valley</p> <p>The managed care network (MCN) working group for Autistic Spectrum Disorders (ASD) has been set up to address needs and develop appropriate services</p> <p>The establishment of a Forth Valley wide ASD Strategic Group, is planned to share experience, knowledge and expertise and facilitate planning of person-focussed services</p>	<p>2.1 Complete Audit of adults with ASD in the Forth Valley Area.</p> <p>2.2 Complete audit of services available to people with ASD and their carers in Forth Valley Area</p> <p>2.3 Identify gaps in service provision for people with ASD and their carers within the Forth Valley Area</p> <p>2.4 Complete audit of future need and future service requirements for people with ASD and their carers within the Forth Valley area</p> <p>2.5 Develop a single multi-agency pathway for diagnosis and access to service for adults with ASD and a learning disability.</p>	<p>2.1 Forth Valley (FV) Partnership ASD Steering Group / ASD Development worker</p> <p>2.2 Forth Valley (FV) Partnership ASD Steering Group / ASD Development worker</p> <p>2.3 Forth Valley (FV) Partnership ASD Steering Group / ASD Development worker</p> <p>2.4 Forth Valley (FV) Partnership ASD Steering Group / ASD Development worker</p> <p>2.5 Forth Valley (FV) Partnership ASD Steering Group / ASD Development worker</p>	<p>2008/09</p> <p>2008/09</p> <p>2008/09</p> <p>2008/09</p> <p>2008/09</p>

			2.6 Working group to be set up to develop strategies of working with children with ASD and a Learning Disability / complex care needs	2.6 Falkirk Council Children and Families Head of Service.	2008
	KEY TOPIC	ACHIEVEMENTS/CURRENT POSITION	PROPOSED ACTION	LEAD	TIMESCALE
3.	Best Value and Quality Standards	<p>Independent audit completed in relation to the recommendations from the SWSI and MWC Borders review.</p> <p>Provision of day Services for people with a LD are inspected by the Care Commission according to the National Care Standards.</p> <p>Housing with Support, Care at home and the Falkirk Local Authority Respite/Short break service of “The Rowans” are inspected by the Care Commission.</p> <p>Positive report from the NHS QIS peer review in respect of</p>	<p>3.1 Complete implementation of the action plan from audit recommendations</p> <p>3.2 Continue to maintain Service standards in accordance with the Scottish Commission for the regulation of care.</p> <p>3.3 Monitor and Review Joint working Agreements and contracts with provider services</p>	<p>3.1 Head of Service / Service Manager Falkirk Council</p> <p>3.2 Falkirk Council Service Manager Community Care</p> <p>3.3 Service Manager Community Care / Service Manager Contracts & Commissioning Falkirk Council</p>	<p>2008</p> <p>Ongoing</p> <p>Annually. Dates vary for each individual Joint Working Agreement.</p>

		<p>specialist services for adults with learning disabilities</p> <p>The training sub group for learning disability established to consider training in relation to evidence based best practice. This sub group informs the main Community Care Training Group, which in turn informs the annual training plan.</p>	<p>3.4 Continue to review health service provision against agreed action plan and quality indicators</p> <p>3.5 Continue to plan and deliver joint training specific for staff working with people with a learning disability according to best evidence based practice.</p>	<p>3.4 NHS Forth Valley Service Manager for Learning Disability and Older People Services</p> <p>3.5 Falkirk Council Service Manager for workforce development</p>	<p>Ongoing</p> <p>Ongoing (Annual Rolling Programme of training)</p>
	KEY TOPIC	ACHIEVEMENTS/CURRENT POSITION	PROPOSED ACTION	LEAD	TIMESCALE
4	Carers	<p>Carers self assessment form available and carers assessment offered as part of the Single Shared Assessment (SSA) procedure. Recorded on Social Work Information System (SWIS)</p> <p>Carers views are recorded as an integral part of the SSA process.</p>	<p>4.1 To promote the uptake of carer's assessments by reminding staff of procedures and the updating of SSA screens.</p> <p>4.2 Day Services to promote the uptake of carers assessment within review process</p>	<p>4.1 Falkirk Council and NHS Forth Valley Service Managers.</p> <p>4.2 Falkirk Council Day Service Managers.</p>	<p>February 2008</p> <p>At each review.</p>

		<p>Meetings are held of the carer's consultation group facilitated by the Disability Information Officer.</p> <p>Representatives from the Carers consultation group are members of FLAG</p> <p>Carers were consulted during the LD audit undertaken with respect to the recommendations following the Borders review.</p> <p>.The needs assessment completed by Stirling University involved consultation with carers</p> <p>Carers are involved in many of the staff interviews.</p> <p>Falkirk Carers Strategy and Action Plan developed for 2007 - 2010</p> <p>Forth Valley Carers Information Strategy developed</p>	<p>4.3 Review Carers consultation group meetings. Schedule topic based meetings,</p> <p>4.4 Develop carer quality standard consultation methods</p> <p>4.5 Ensuring carer and/or Service User representation in all staff interviews for learning disability posts where appropriate</p>	<p>4.3 FLAG / Disability Information Officer</p> <p>4.4 Service Manager Falkirk Council. Team Manager FLDT</p> <p>4.5 Falkirk Council - Service Manager Learning Disability</p>	<p>March 2008</p> <p>2008/09</p> <p>July 2008</p>
--	--	--	--	---	---

	KEY TOPIC	ACHIEVEMENTS/CURRENT POSITION	PROPOSED ACTION	LEAD	TIMESCALE
5.	Information Systems	<p>Joint Single Shared Assessment (SSA) form established and training completed.</p> <p>SSA form electronically recorded on Social Work Information System (SWIS)</p> <p>The financial system Trojan Abacus records cost of care provision including learning disability provision</p> <p>Health members of Falkirk Learning Disability Team (FLDT) have read only access to SWIS</p> <p>Information Sharing Protocol established between NHS Forth Valley and the 3 Local authorities of Clackmannanshire, Falkirk and Stirling</p>	<p>5.1 Develop shared electronic multi-agency access in accordance with the information sharing protocol</p> <p>5.2 Further develop systems within the FLDT to enable full access by all members of the team as appropriate to joint information.</p>	<p>5.1 Forth Valley eCare and eHealth groups</p> <p>5.2 FLDT Manager</p>	<p>2008/09</p> <p>2009/10</p>

	KEY TOPIC	ACHIEVEMENTS/CURRENT POSITION	PROPOSED ACTION	LEAD	TIMESCALE
6.	Day Services	<p>Day Services complete person centred support plans for individuals in user friendly format</p> <p>Activities are community based where possible with less use of day centre buildings</p> <p>A new service has been piloted as a development of the Camelon Day Service in Denny. This service has been established for those service users from the Denny / Bonnybridge area to facilitate access within their local community. Consultation took place with Day service users and carers on the provision of more localised services and re-design of day services.</p> <p>Pilot project of transition arrangement between Carrongrange School and Bainsford Day Centre complete and now ongoing.</p>	<p>6.1 To consolidate the Denny provision. To develop a smaller service for people who are older and respond to quieter environment. To re-design identified staff posts whose remit would be to further develop day services in line with identified need. To obtain committee approval for proposed re-design.</p> <p>6.2 Further improve links with Forth Valley College to meet identified need of service users</p> <p>6.3 Develop transition protocol with Carrongrange School and Falkirk Council Day Services.</p>	<p>6.1 Falkirk Council Head of Service Community Care</p> <p>6.2 Falkirk Council / FLAG</p> <p>6.3 Day Centre Manager</p>	<p>April 2008</p> <p>August 2008</p> <p>August 2008</p>

		<p>Each Day centre service has a service user consultation/steering group</p> <p>Day Centre staff have an induction programme specific to learning disability and each member of staff has a training record.</p> <p>Day Centre staff receive training on total communication techniques.</p> <p>Health awareness and healthy relationship groups have run in day services in conjunction and led by the community learning disability nursing service from the FLDT.</p>	<p>6.4 Develop Baseline assessment tool for use within day services for people who are developing dementia.</p> <p>6.5 Further develop the health awareness and healthy relationship groups to establish a rolling programme that can be led by day service staff.</p>	<p>6.4 Falkirk Council Day Services Managers and FLDT Manager.</p> <p>6.5 Falkirk Council Day Services Managers with CLDN in the FLDT.</p>	<p>December 2008</p> <p>December 2008</p>
	KEY TOPIC	ACHIEVEMENTS/CURRENT POSITION	PROPOSED ACTION	LEAD	TIMESCALE
7.	Direct Payments	Forth Valley Direct Payment Support Service established.	7.1 Continue to promote the option of direct payments for people with a learning disability	7.1 Falkirk Council Policy and Development Officer.	Ongoing

			7.2 Establish a procedure for the transition from child care services to adult services in relation to direct payments.	7.2 Falkirk Council Policy and Development Officer.	2008/09
	KEY TOPIC	ACHIEVEMENTS/CURRENT POSITION	PROPOSED ACTION	LEAD	TIMESCALE
8.	Dementia	<p>Falkirk Council Day Services continue to provide a service to people with a learning disability and dementia.</p> <p>Falkirk Learning Disability Team (FLDT) work with people who have a learning disability and dementia. Specialist Clinical psychology and Community Nursing resourced through the FLDT.</p> <p>Training on LD and Dementia provided to staff.</p> <p>Stirling Dementia Initiative based at Stirling University is resource available and has links with the FLDT.</p>	<p>8.1 Profile needs of people with LD and Dementia within day services and plan service to meet needs.</p> <p>8.2 Develop baseline assessment tool for use by staff within day services and other provider services.</p> <p>8.3 Work with contracts and commissioning service and provider services to identify service requirements of the increasing number of people with LD and dementia</p> <p>8.4 Develop integrated care pathway for people with LD and dementia.</p>	<p>8.1 Service Manager Falkirk Council and Day Centre Managers</p> <p>8.2 FLDT with Day Centre Managers</p> <p>8.3 Falkirk Council Service Manager Community Care</p> <p>8.4 FLDT</p>	<p>2008</p> <p>2008/09</p> <p>August 2008</p> <p>2009</p>

	KEY TOPIC	ACHIEVEMENTS/CURRENT POSITION	PROPOSED ACTION	LEAD	TIMESCALE
9	Employment	<p>Antonine Strategic Supported Employment (ASSET) was established in partnership with Enable and part funded by ESF.</p> <p>This service is now well established and all staff posts mainstream funded as duration of ESF funding has come to an end.</p> <p>Falkirk Council operationally manage the project and employ all staff members with liaison links with Enable.</p> <p>The service has membership with SUSE and in partnership with Clackmannanshire and Stirling employment services runs annual business diversity awards.</p> <p>ASSET has strong links with local businesses and has negotiated with local businesses to provide job experience opportunities and longer term jobs.</p> <p>Job positions have also been obtained from Falkirk Council.</p> <p>Service users have</p>	<p>9.1 Continue to establish links with local businesses for employment opportunities</p> <p>9.2 Review referral process and procedure for the ASSET service.</p> <p>9.3 Increase opportunity to mainstream job positions for service users</p> <p>9.4 Continue positive links with further education services</p> <p>9.5 Continue to ensure that service users obtain access to appropriate training courses identified through their individual training profile.</p>	<p>9.1 ASSET Manager</p> <p>9.2 ASSET Manager</p> <p>9.3 ASSET Manager</p> <p>9.4 ASSET Manager / FLAG</p> <p>9.5 ASSET Manager</p>	<p>Ongoing</p> <p>December 2008</p> <p>Ongoing</p> <p>Ongoing</p> <p>At each review</p>

		completed courses on First Aid, Food and Hygiene and other courses beneficial to obtaining employment.			
	KEY TOPIC	ACHIEVEMENTS/CURRENT POSITION	PROPOSED ACTION	LEAD	TIMESCALE
10	Health Promotion and Improving Access to Health Services	<p>Health awareness groups developed jointly with community learning disability nursing and day services.</p> <p>Weight management and healthy eating programme established by dietician from FLDT.</p> <p>Development of multi-disciplinary training to address the eating and drinking needs of people with a learning disability.</p> <p>Award winning SNACK (Safe Nutrition and Chewing Knowledge) pack developed.</p> <p>Specialist GP liaison position established for learning disability.</p> <p>Pilot project with Well Man clinics - Community Learning Disability Nurses worked in</p>	<p>10.1 Continue to develop a programme of health awareness groups.</p> <p>10.2 Raise awareness of healthy eating programme and training relating to the eating and drinking needs of people with a LD.</p> <p>10.3 Raise awareness of SNACK pack to wider population.</p> <p>10.4 Identify funding to progress Well Man project beyond successful pilot.</p> <p>10.5 Monitor and evaluate impact and benefit of LD nurse liaison post.</p>	<p>10.1 FLAG</p> <p>10.2 FLDT</p> <p>10.3 FLDT</p> <p>10.4 FLAG</p> <p>10.5 NHS Forth Valley Service Manager Learning Disability and Older People Services.</p>	<p>Ongoing</p> <p>Ongoing</p> <p>Ongoing</p> <p>2008/09</p> <p>2008/09</p>

		<p>partnership with clinic to provide service to men with a learning disability to facilitate access and to take account of conditions prevalent to people with a LD.</p>	<p>10.6 Identify resources to deliver education awareness on the needs of people with LD to frontline health service staff.</p>	<p>10.6 Falkirk CHP</p>	<p>2008/09</p>
		<p>Inclusive communication training provided by Speech and Language service to provider services. Provider services have liaison link person for advice on communication.</p>	<p>10.7 Full business case for a service for children with LD and Mental Health issues and / or challenge services to be prepared and entered in the planning cycle – funding for consultant psychiatrist, Community LD nursing and Speech and Language therapy to be identified.</p>	<p>10.7 General Manager Clackmannanshire CHP (host CHP for NHS FV MH services)</p>	<p>December 2008</p>
		<p>Funding of 1 year (possibly 2 year) nurse liaison post. Liaison nurse post has experience in learning disability and will work with the acute general hospital regarding admission, stay in and discharge from hospital for people with a LD.</p>	<p>10.8 Participate in the development of a regional secure accommodation in Fife</p>	<p>10.8 NHS Fife on behalf of the South East & Tayside NHS boards (local lead – Senior Planning Manager NHS FV).</p>	<p>2008/10</p>
		<p>Booklet has been developed by health services locally on ASD awareness for hospital staff.</p>			
		<p>Education awareness of the needs of people with a LD programme for frontline health staff developed.</p>			

		<p>Funding gained to provide staff grade psychiatry and clinical psychology assessment of children with learning and mental health difficulties and/or who challenge services</p> <p>Proposal to develop with partner health services in the MCN (Managed Care Network) towards regional forensic secure accommodation in Fife</p>			
	KEY TOPIC	ACHIEVEMENTS/CURRENT POSITION	PROPOSED ACTION	LEAD	TIMESCALE
11.	Information	<p>Forth Valley Carers Information Strategy developed.</p> <p>Falkirk Council Information Officer post established.</p> <p>Falkirk Council web site developed with information on services for people with a Learning Disability.</p> <p>Representation from FLDT on web site information group</p>	<p>11.1 Implement Forth Valley Carers Information Strategy</p> <p>11.2 Progress FLDT newsletter for inclusion on Falkirk Council web site</p> <p>11.3 Progress FLAG newsletter for inclusion on Falkirk Council web page</p> <p>11.4 Develop dedicated web page on Falkirk Council web site for</p>	<p>11.1 NHS Forth Valley Senior Planner</p> <p>11.2 FLDT Manager</p> <p>11.3 Falkirk Council Service Manager Community Care</p> <p>11.4 FLDT Manager and Falkirk Council Information Officer</p>	<p>2007 – 2010</p> <p>February 2008</p> <p>April 2008</p> <p>December 2008</p>

		<p>Newsletter produced by FLDT distributed widely and to be included on Falkirk Council website</p> <p>Newsletter being produced by FLAG to be included on Falkirk Council web page</p> <p>Minutes from FLAG meeting distributed to members of the Joint Future Management Group</p> <p>Disability Information Service (DIS) accessible at Dundas Resource Centre</p> <p>There is a specific welfare Benefits contact number for advice and information, which people can use.</p> <p>Disability Information Officer from DIS attends FLAG meetings</p> <p>For Falkirk Bairns (FFB) newsletter published and also on Council web site. Includes information for children with special needs and their carers.</p>	<p>information on learning disability service provision in service user friendly format.</p> <p>11.5 Continue information sharing and consultation via carer representatives on FLAG.</p> <p>11.6 ASSET newsletter to be included on Falkirk Council web site.</p>	<p>11.5 FLAG</p> <p>11.6 ASSET Manager and Information Officer</p>	<p>Ongoing</p> <p>May 2008</p>
--	--	---	--	--	--------------------------------

	KEY TOPIC	ACHIEVEMENTS/CURRENT POSITION	PROPOSED ACTION	LEAD	TIMESCALE
12	Joint Commissioning	<p>Successful closure of the Royal Scottish National Hospital (RSNH) specialist long stay hospital and increase in community based service provision</p> <p>Establishment of community integrated health and social work services multi-disciplinary team for people with a learning disability aged 16+ (FLDT) operationally managed by single team manager</p> <p>Jointly funded high dependency care support packages in community.</p> <p>Forth Valley procedure and protocol for jointly funded care support provision reviewed and being revised to include specialist learning disability needs.</p> <p>Representation from both partners of health and local authority on respective funding panels</p>	<p>12.1 Establish team based accommodation for all members of the FLDT (currently not all team members are based together)</p> <p>12.2 Complete audit of local service provision and identify gaps and future needs requirement of service provision</p> <p>12.3 Complete audit of service provision provided out of area</p> <p>12.4 MCN (Managed Care Network) considering the joint commissioning, on a regional basis, of specialist services for those service users who require very specialist care support. and intervention that cannot be met by local services.</p>	<p>12.1 Falkirk Council Head of Service Community Care and Falkirk CHP General Manager.</p> <p>12.2 Falkirk Council Service Manager Community Care</p> <p>12.3 Falkirk Council</p> <p>12.4 Regional MCN Learning Disability Manager</p>	<p>2009/10</p> <p>2008</p> <p>2008</p> <p>2008/10</p>

		Development of assessment tool for use when applying for the joint funding of care support for children and young people.	12.5 Forth Valley procedure and protocol for joint funding of community care support packages/provision to be agreed and ratified. 12.6 Procedure, Protocol and assessment tool for use in the application for jointly funded care provision for children/young people to be agreed and ratified.	12.5 Heads of Service with the 3 Local Authorities (Clackmannanshire, Falkirk and Stirling) and General Managers for the 3 CHPs. 12.6 NHS Forth Valley and 3 Local Authorities of Clackmannan, Falkirk and Stirling	June 2008 June 2008
	KEY TOPIC	ACHIEVEMENTS/CURRENT POSITION	PROPOSED ACTION	LEAD	TIMESCALE
13	Lifelong learning	Education for children with additional support and learning needs in specialist and mainstream facilities is covered in the Falkirk Integrated Childrens Services Plan (FFB) ASSET employment project has established liaison links with Forth Valley further education College	13.1 Implement Education Services Accessibility Strategy 2005 - 2008 13.2 Consider further education needs within review of transition action plan	13.1 Falkirk Council Additional Support for Learning Advisor 13.2 Falkirk Council and NHS Forth Valley.	2008 2008

		<p>Falkirk Council Day Services have established links with Forth Valley further education college</p> <p>Forth Valley further education college provides support and courses for people with learning disability</p> <p>Additional Learning Support post established within education services</p>	13.3 Identify representation on FLAG from Additional Learning Support / Integrated Learning Communities	13.3 Service Manager Falkirk Council	March 2008
	KEY TOPIC	ACHIEVEMENTS/CURRENT POSITION	PROPOSED ACTION	LEAD	TIMESCALE
14	Older People	<p>FLDT provides a multi-disciplinary service to older people with a learning disability</p> <p>Community LD Nurses within the FLDT provide health checks for older people with a learning disability on their caseloads</p> <p>Pilot project set up with Well Man clinics</p> <p>Training provided on learning disability and dementia</p>	<p>14.1 Develop a baseline assessment tool for older people with a learning disability and dementia</p> <p>14.2 An outcome from the re-design of day services would be to progress a development role within Day Services to identify future day service requirements. To include the needs of the increasing number of older service users with a learning disability</p>	<p>14.FLDT Manager</p> <p>14.2 Falkirk Council Service Manager Community Care</p>	<p>2008/09</p> <p>2008/09</p>

		Day Services provide support plans individual to the older service user	14.3 Identify resources to progress CLDN service support within Well Man clinics 14.4 Continue training specific to older people with a learning disability	14.3 Forth Valley Learning Disability Strategic Planning Group / FLAG 14.4 Falkirk Learning Disability Training Group	2008/09 Ongoing
	KEY TOPIC	ACHIEVEMENTS/CURRENT POSITION	PROPOSED ACTION	LEAD	TIMESCALE
15	Parents with Learning Disability	Liaison links and joint working between child care services and FLDT. Identified that there is an increasing requirement for specialist knowledge in the support requirements of parents with a learning disability	15.1 FLDT to consider interface agreement with child care services with respect to specialist support/advice to children and family services for parents with a learning disability	15.1 FLDT Manager	2009

	KEY TOPIC	ACHIEVEMENTS/CURRENT POSITION	PROPOSED ACTION	LEAD	TIMESCALE
16	Person Centred Planning	<p>Specific Person Centred Planning training purchased and provided to members of the FLDT and Day Service staff.</p> <p>Members of FLDT using PCP training in assessment of needs and future planning</p>	<p>16.1 PCP awareness training to be considered for members of staff working with people with a learning disability</p> <p>16.2 Members of FLDT to continue use of PCP for people with learning disability and complex care needs</p> <p>16.3 Care Management reviews of complex care cases to include a person centred care support plan developed by care provider service</p>	<p>16.1 Falkirk Council learning disability training sub group.</p> <p>16.2 FLDT Manager</p> <p>16.3 FLDT Manager</p>	<p>Reviewed annually</p> <p>Ongoing</p> <p>At each individual review.</p>
	KEY TOPIC	ACHIEVEMENTS/CURRENT POSITION	PROPOSED ACTION	LEAD	TIMESCALE
17	Service User Involvement	<p>Service User Self Advocacy group "Speak Up" facilitated by Advocacy into Action is the consultation reference with FLAG.</p> <p>Each of the 3 Day Centres have a service user consultation/steering group.</p>	<p>17.1 Consolidate and strengthen links between FLAG and "Speak Up" group.</p> <p>17.2 Further extend the involvement of service users in staff interviews</p>	<p>17.1 FLAG</p> <p>17.2 Service Manager Falkirk Council</p>	<p>Ongoing</p> <p>Ongoing</p>

		<p>Service users are involved in interviews for members of staff within Day Services. Service user consultation event held regarding proposals for redesign of day services</p> <p>LD Audit on Borders recommendations involved service users in the consultation process</p> <p>Service User views are integral part of Single Shared Assessment</p> <p>Funding applied for and obtained for a project to train people with a learning disability in the use of talking mats as an evaluation tool of the Advocacy into Action Service. Once training complete evaluation technique could be considered for use with other service provision</p>	<p>17.3 Develop methods to survey service user opinion on service delivery</p> <p>17.4 Implement recommendations in the "It's our Health Service" guide to increase the involvement of people with a learning disability, their family and carers in monitoring health service quality.</p> <p>17.5 Provide training to service user group on use of talking mats as an evaluation tool and implement the use of this tool for evaluation purposes.</p>	<p>17.3 Falkirk Council Service Manager Community Care</p> <p>17.4 NHS Forth Valley Service for Manager Learning Disability and Older People</p> <p>17.5 Head of Speech and Language Therapy / Stirling University / Advocacy into Action</p>	<p>2008/09</p> <p>2007/10</p> <p>2008</p>
--	--	---	---	---	---

	KEY TOPIC	ACHIEVEMENTS/CURRENT POSITION	PROPOSED ACTION	LEAD	TIMESCALE
18	Short Breaks / Respite	<p>Short Breaks Bureau (SBB) established to provide advice and direct access to short break/ respite provision. In addition to contracting places for short breaks the SBB can assist in the planning and provision of individual innovative breaks.</p> <p>Local Authority provision of "The Rowans" has 3 short break placements for people with a learning disability</p> <p>Contract places purchased by Falkirk Council from care provider PSS at their local provision "The Meadows" for short breaks for people with a learning disability and complex care needs.</p> <p>In principle have an agreement from PSS, NHS Forth Valley and Falkirk Council to work up a proposal to provide a joint service for adults with a learning disability whose needs are complex and/or challenge services.</p>	<p>18.1 Develop the proposal and service specification for a short break service in partnership with care provider PSS, and NHS Forth Valley to provide short breaks/respite for people with a learning disability whose behaviour challenges</p> <p>18.2 Consider further use of direct payments to provide individual meaningful short breaks for service users</p>	<p>18.1 Falkirk Council Head of Service Community Care and General Manager Falkirk CHP.</p> <p>18.2 Short Breaks Bureau Manager</p>	<p>June 2008</p> <p>Ongoing</p>

		Care Provider NCH have short break provision locally (Tayavallah) for children and young people with special needs up to the age of 19. Forth Valley NHS jointly fund with the 3 local authorities a staff post at Tayavallah to be used flexibly as required for service users whose behaviour challenges.			
	KEY TOPIC	ACHIEVEMENTS/CURRENT POSITION	PROPOSED ACTION	LEAD	TIMESCALE
19	Supported Living	<p>Review of supported living provision completed for all people who were previously in the long stay specialist hospital RSNH following the re-provisioning programme.</p> <p>Benefits review completed for all people who moved out from RSNH following the re-provisioning programme – benefits maximised.</p> <p>Supporting people funding used to provide housing support for people with a learning disability in their own tenancy</p>	<p>19.1 Falkirk Council Contracts and commissioning service reviewing supported living accommodation with a view to best value and confirmation of contracts.</p> <p>19.2 Audit being carried out to identify gaps in service provision and likely future demands on service</p>	<p>19.1 Falkirk Council Service Manager Community Care and Service Manager contracts and commissioning.</p> <p>19.2 Falkirk Council Service Manager Community Care and Service Manager contracts and commissioning</p>	<p>2008</p> <p>2008</p>

	KEY TOPIC	ACHIEVEMENTS/CURRENT POSITION	PROPOSED ACTION	LEAD	TIMESCALE
20	Vulnerable Adults / Adult Support and Protection	<p>Forth Valley Guidance on the Protection of Vulnerable Adults agreed and ratified by the partner organisations of NHS Forth Valley, Central Scotland Police, Clackmannanshire Council, Falkirk Council and Stirling Council.</p> <p>Falkirk Council local procedures on adult support and protection in accordance with the Forth Valley guidance is being finalised.</p> <p>Falkirk Council policy and procedure for Risk Assessment and Risk Management being finalised.</p> <p>Training has taken place on the Forth Valley vulnerable adults guidance and further training is being organised on the Falkirk Council Local policy and procedures.</p> <p>MHO from Falkirk Council's dedicated MHO service is a member of the Scottish</p>	<p>20.1 Falkirk Council local community care procedure on adult support and protection to be agreed and ratified.</p> <p>20.2 Local Community Care guidance on risk assessment and risk management to be agreed and ratified.</p> <p>20.3 Training to be organised and implemented on the above procedures.</p> <p>20.4 Training on the new Adult Support and Protection Act 2007 to be organised and delivered.</p> <p>20.5 Review and monitor the people recorded on the SWIS and the eHealth Information System as vulnerable adults. Data collected and analysed at Forth Valley Vulnerable Adults Steering Group.</p>	<p>20.1 Head of Service and Service Manager for workforce development.</p> <p>20.2 Head of Service</p> <p>20.3 Falkirk Council Community Care and Workforce development Manager</p> <p>20.4 Forth Valley Partnership</p> <p>20.5 Falkirk Council Head of Service for Community Care and General Manager Falkirk Community Health Partnership.</p>	<p>May 2008</p> <p>May 2008</p> <p>June 2008</p> <p>2008/09</p> <p>Quarterly through 2008.</p>

		<p>Government working group drafting the code of practice for the Adult Support and Protection Act 2007 – local working group is kept updated.</p> <p>Electronic Database SWIS has been updated to enable the monitoring of people identified and recorded as vulnerable.</p> <p>Falkirk Council Care Programme Approach (CPA) also includes people with a learning disability whose needs are complex and require multi-agency intervention</p>	20.6 Review and monitor people with a learning disability recorded on the CPA programme.	20.6 Falkirk Council Service manager and Mental Health Development Officer	Six Monthly.
	KEY TOPIC	ACHIEVEMENTS/CURRENT POSITION	PROPOSED ACTION	LEAD	TIMESCALE
21	Workforce Development	<p>Falkirk Council has a training sub group to consider the training needs particular to delivering a service for people with a learning disability. This group informs the over arching Community Care Training Group.</p> <p>Different levels of training in</p>	<p>21.1 Training sub group for learning disability working on and to finalise induction training pack for new workers – training particular to learning disability.</p> <p>21.2 PCP training to be put into practice</p>	<p>21.1 Falkirk Council Training group / Workforce development service</p> <p>21.2 FLDT Manager</p>	<p>2008</p> <p>Ongoing</p>

		<p>PCP have been delivered from awareness training to becoming a trainer.</p> <p>Day Service Managers have progressed their registration with the SSSC – programme of training scheduled to ensure and maintain the requirements of registration.</p> <p>Day Centre Staff have individual training programmes including SVQ A local forum is held for workers with respect to 21st Century Social Work – Changing Lives</p> <p>A Forth Valley Learning Disability Forum is held 2 - 3 times annually to disseminate information, share good practice and to consider evidence based research in practice.</p> <p>Joint (Falkirk Council and NHS Forth Valley) training delivered on Single Shared Assessment and Care Management</p>	<p>21.3 Continue to provide training to meet the requirements of registration</p> <p>21.4 Provide Support and direction for the change management and training required in response to “Changing Lives.2</p> <p>21.5 Consolidate the Forth Valley Learning Disability Forum and consider expanding to include workers and providers in other work areas.</p> <p>21.6 FLDT has scheduled a team development day to identify and agree the key objectives for the team.</p>	<p>21.3 Falkirk Council Service Manager Workforce Development.</p> <p>21.4 Falkirk Council Workforce Development Service</p> <p>21.5 Falkirk Council / FLAG</p> <p>21.6 FLDT</p>	<p>Ongoing</p> <p>Ongoing</p> <p>2008</p> <p>March 2008</p>
--	--	---	---	--	---

		<p>Annual Employee Development Reviews are completed for all members of staff</p> <p>Employee survey completed and action planned on outcome recommendations</p> <p>A review of Assessment and Care Management teams for Adults has been completed. The Multi – Agency Inspection of Services for Older People (MAISOP) has been completed.</p>	<p>21.7 Action Plans have been developed from the review completed of the assessment and care management teams and from the MAISOP. Action Plans to be agreed and implemented.</p> <p>Deployment of staff, Community Care teams and Integrated specialist teams organisational structure and associated budget allocation to be reviewed taking account of action plans, service demand and integration of services.</p>	<p>21.7 Falkirk Council Head of Service and General Manager for the Falkirk CHP.</p>	<p>2008/09</p>
--	--	---	--	--	----------------

REFERENCES AND CONTACTS

REFERENCE	Source / Contact	REFERENCE	Source / Contact
Same as You Review (2002) NHS QIS Learning Disability Review	www.scotland.gov.uk/ldsr/docs/tsay-03.asp www.nhshealthquality.org/nhsqis/1206.html	Forth Valley Carers Information Strategy	Stephen.French@fvhb.scot.nhs.uk
Integrated Childrens Services Plan	ffb@falkirk.gov.uk	Stirling University : Forth Valley Needs Assessment	Carole.jones@falkirk.gov.uk
NHS Forth Valley Healthcare Strategy	Joe.mcghee@fvhb.scot.nhs.uk	NHS Forth Valley Project Proposal for Autistic Spectrum Disorder	Joe.mcghee@fvhb.scot.nhs.uk
NHS Forth Valley Local Health Plan	Joe.mcghee@fvhb.scot.nhs.uk	Learning Disability Managed Care Network	Tom.Hammond@fvhb.scot.nhs.uk
Falkirk Council Housing and Social Work Service Teams Management Plans	Marion.reddie@falkirk.gov.uk	Falkirk Carers Strategy 2007 - 2010	Carole.jones@falkirk.gov.uk
Joint Future Performance Framework and Local Improvement Targets	Carole.jones@falkirk.gov.uk	Forth Valley Guidance on the Protection of Vulnerable Adults	Carole.jones@falkirk.gov.uk
Joint Health Improvement Plan	Gail.fuller@falkirk.gov.uk	Assessment and Care Management Teams action plan.	Marion.reddie@falkirk.gov.uk
Accessibility Strategy 2005 - 2008	Ellen.hamilton@falkirk.gov.uk		

Glossary of Acronyms

AiA	Advocacy into Action	MCN	Managed Care Network
ASL	Additional Support for Learning	MHO	Mental Health Officer
ASD	Autistic Spectrum Disorder	NCH	National Childrens Homes
ASSET	Antonine Strategic Support for Education and Training	NHS	National Health Service
CHP	Community Health Partnership	PCP	Person Centred Plan
CLDN	Community Learning Disability Nurse	PiP	Partnership in Practice agreement
CPA	Care Programme Approach	RNIB	Royal National Institute for the Blind
CRO	Childrens Rights Officer	RNID	Royal National Institute for the Deaf
DIS	Disability Information Service	RSNH	Royal Scottish National Hospital
ESF	European Social Fund	SALT	Speech And Language Therapy
FDRl	Falkirk and District Royal Infirmary	SAY	Same As You
FFB	For Falkirk Bairns	SBB	Short Breaks Bureau
FLAG	Falkirk Local Action Group	SNACK	Safe Nutrition And Chewing Knowledge
FLDT	Falkirk Learning Disability Team	SSA	Single Shared Assessment
FV	Forth Valley	SSSC	Scottish Social Services Council
GP	General Practitioner	SUSE	Scottish Union of Supported Employers
LD	Learning Disability	SVQ	Scottish Vocational Qualification
MAISOP	Multi Agency Inspection of Services for Older People	SWIS	Social Work Information System

Reference Number: SWCC36

Version: March 2008