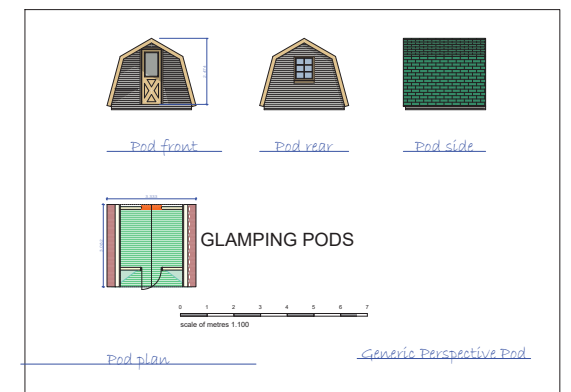
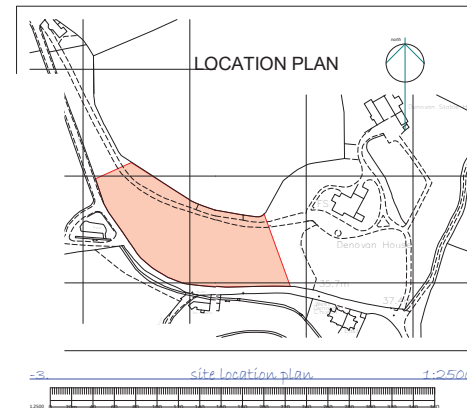
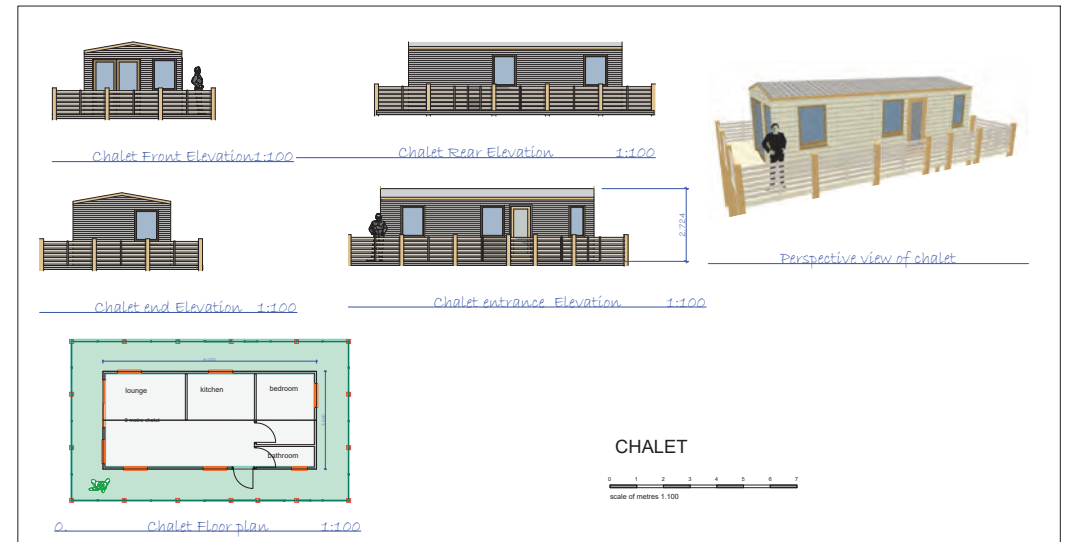
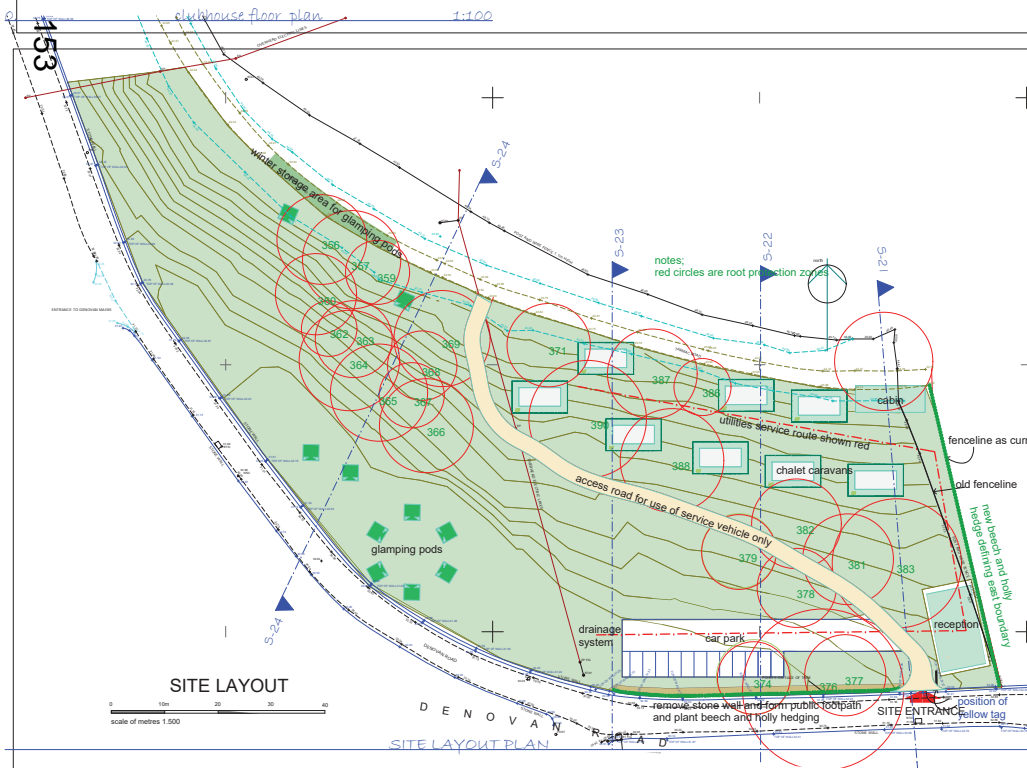
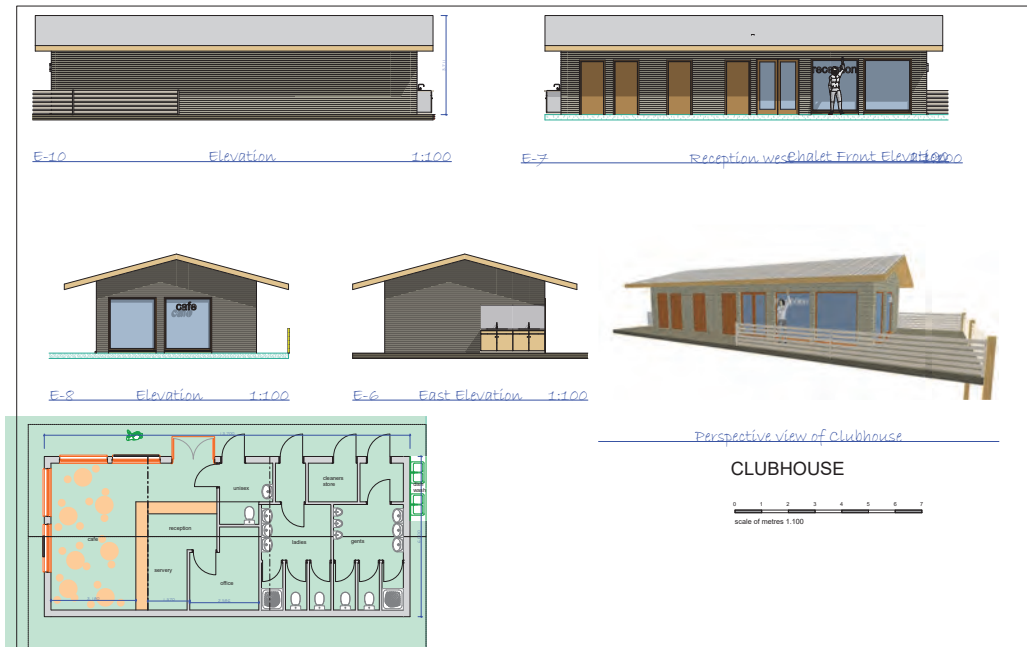


Project		
PROPOSED HOLIDAY PARK AT DENOVAN VILLAGE DUNIPACE		
Title		
site section locations		
Section Ref.	Sheet Size	
CC	A1	
McFARLANE CURRAN BUILDING DESIGN		
12 MAIN STREET, COMRUE, DUNFERMLINE KY12 9HD TEL 07952522860 email: csm@mcfarlanecurrans.co.uk		
Date	Drawn	Drawing No.
25/09/2016		4953.d.07e



Project PROPOSED HOLIDAY PARK AT DENOVAN VILLAGE DUNIPACE		
Title All layouts		
Drawn By CC	Sheet Size A1	
McFARLANE CURRAN BUILDING DESIGN		
12 MAIN STREET, CONRUE, DUNFERMLINE KY12 9HD TEL 07952522860 email: ccurran@mcfarlanecurrans.co.uk		
Date 25/09/2016	Scale Various	Drawing No. 4953.d.06j

APPENDIX 2 WOODLAND PLANTING PLAN.

It is intended to improve the woodland with a view to establishing a bluebell woodland with a range of native tree and plant species and related measures to enhance biodiversity. New planting will include approximately 300 metres of beech (*Fagus sylvatica*) and holly (*Ilex aquifolium*) hedging to provide both screening and wildlife habitat. The hedging will front the development and screen the pod areas and the base of the cabin piles. To enhance the environment it is intended to use widespread flowering plants throughout the site. Planting will include:

30 x *Jasminum officinale* (Jasmine)

30 x *Camellia* (Camelia)

20 x *Lonicera fragrantissima* (Honeysuckle)

20 x *Hedera helix* (Ivy)

20 x *Pyracantha* (Pyracantha)

20 x *Clematis alpine* (Clematis)

10 x *Buddleja* (Buddleia)

New Tree Planting:

20 x *Sorbus aucuparia* (rowan)

20 x *Taxus baccata* (common yew)

30 x *Quercus robur* (common oak)

30 x *Corylus avellana* (hazel)

20 x *Ilex x aquifolium* (common holly).

20 x *Pinus sylvestris* (Scots pine)

10 x *Acer campestre* (field maple)

The trees will be planted as transplants with overall height of 20–50 cm. The root system will be cell grown. Each tree will be planted with a mulch mat, 1.2 metre high tree tube supported by a wooden stake.

The newly planted trees will have suitable staking, protection and mulching for at least the first 36 months after planting. Tending of the replacement trees will include, beating-up; formative pruning; weed control; irrigation (as required); fertilising (as required); adjustment of tree ties and removal of tree stakes.

The plant selection, planting and aftercare will be carried out to the minimum standards defined in the British Standard 3936 Part 1 – ‘Specification for Trees and Shrubs’ and the Horticultural Trades Association – ‘National Plant Specification’ and ‘Handling and Establishing Landscape Plants’. A professional will be employed on a full time permanent basis to manage the planting and grounds.

APPENDIX 3 Woodland Management Plan

The current woodland is of poor quality. Much of the trees are mature and split. Some of the trees identified from the tree report have been felled others will be maintained or felled where necessary.

Replacements for these have been identified and itemised in the answer to question 7

New planting maintenance.

The plant selection, planting and aftercare will be carried out to the minimum standards defined in the British Standard 3936 Part 1 – ‘Specification for Trees and Shrubs’ and the Horticultural Trades Association – ‘National Plant Specification’ and ‘Handling and Establishing Landscape Plants’

The replacement trees will be tended for a minimum of five years after planting with a new five year plan for further planting then developed where appropriate. Tending of the replacement trees will include, beating-up; formative pruning; weed control; irrigation (as required); fertilising (as required); adjustment of tree ties and removal of tree stakes.

The initial 5 year plan is to create a better and sustainable woodland to replace the current deteriorating woodland and overgrown landscape. Replacement planting is in the order of 8:1. After the initial 5 year period a future woodland management/maintenance plan will be agreed and then implemented in order to support the further enhancement of the woodland resource.

It is planned to harvest and relocate existing bulbs from those areas minimally affected by the development. Further bulb planting of snowdrops, daffodils and bluebells will be undertaken as the development progresses.

Arboriculturalist Advisor:

Adam Riedi, Tech.cert. Arbor.A

Kilgour Steading, Falkland, Fife KY15 7AE

APPENDIX 4 – VISUAL ASSESSMENT OF SITE

