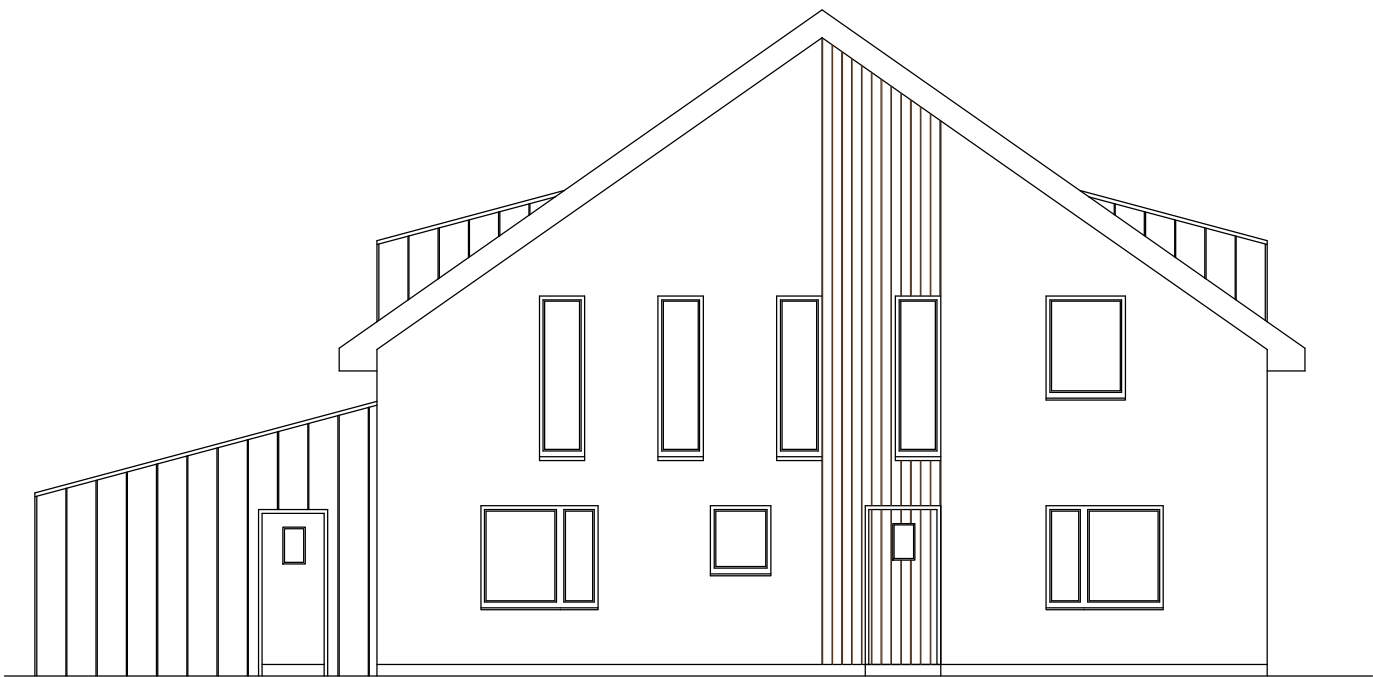
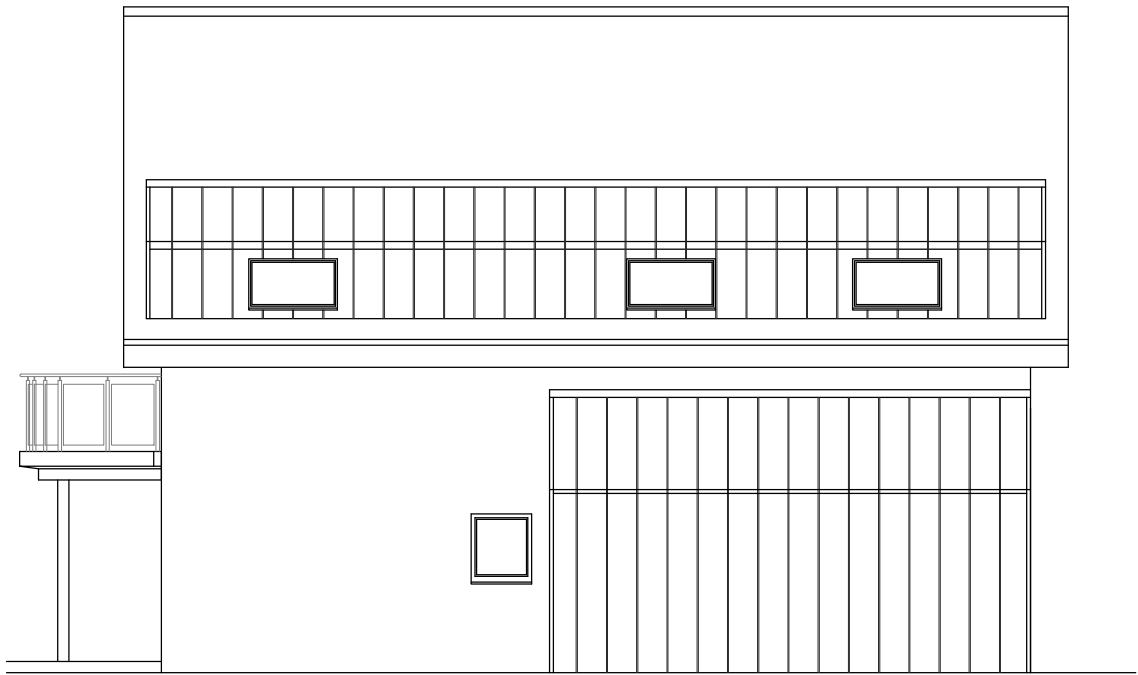




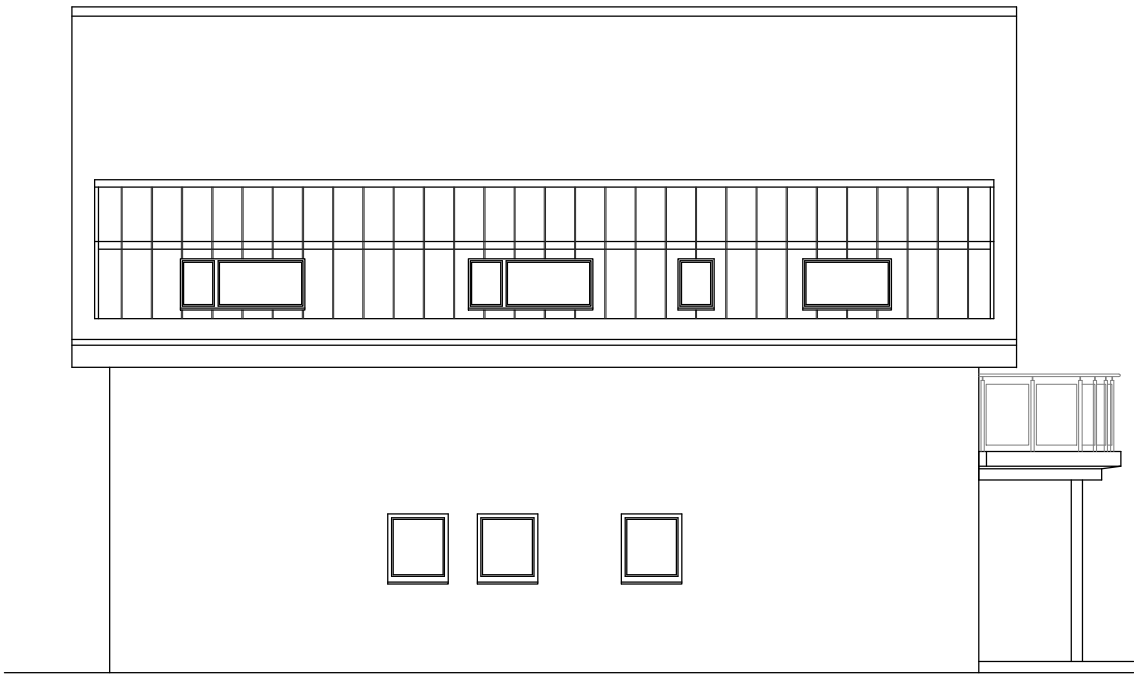
1 - North East Elevation



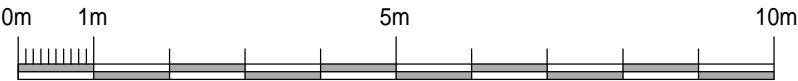
2 - South West Elevation



3 - North West Elevation



4 - South East Elevation



- Notes:
- Materials
1. Timber (Brown)
  2. Render (White)
  3. Zinc (Grey/Green)
  4. Glass

A	21.11.16	Elevations Updated
#	08.04.16	First Issue
Issue	Date	Details

anderson  
bayne  
architects

Fleming House, 5 Fleming Road  
Kirkton Campus, Livingston EH54 7BN  
T: 01506 410335  
[www.andersonbayne.com](http://www.andersonbayne.com)  
E: [office@andersonbayne.com](mailto:office@andersonbayne.com)

Project

**Philip MacFarlane**  
2 Storey Detached House  
South-East of Tappernail Farm  
East of Hilcrest Sq., Reddingmuirhead

Drawing		date	scale(s)	drawn
Proposed Elevations		Nov 2016	1:100 @ A3	SB
		project no.	drawing no.	rev
		2130	AG (1) 002	A