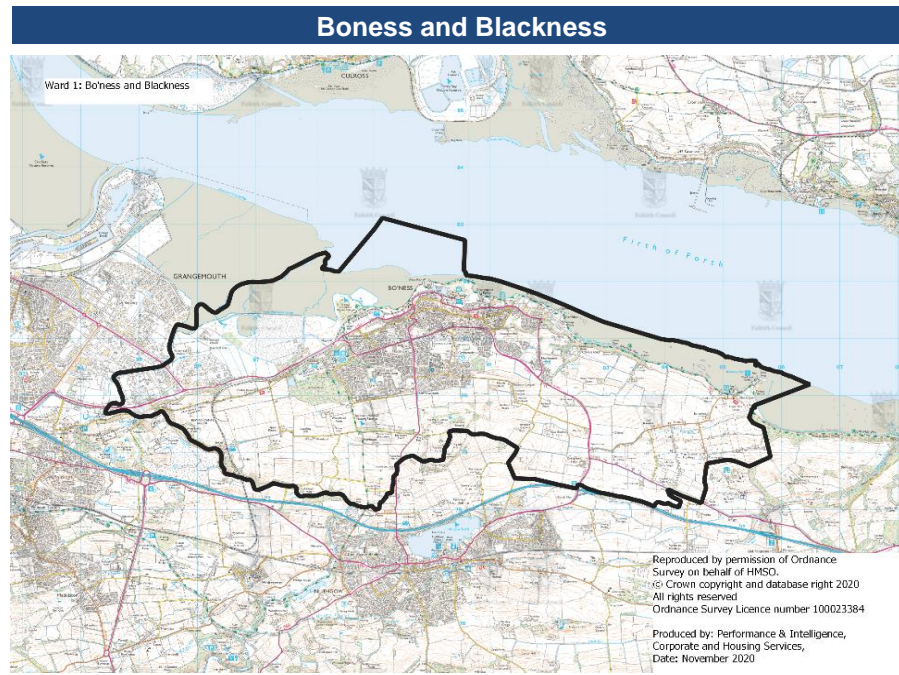


Ward 1: Bo'ness and Blackness



Insight

This insight presents key findings for Ward 1 Bo'ness and Blackness

Basic facts

	Ward	Falkirk
Area (hectares)	2,735	31,493
Total population (2019)	15,429	168,890
Population density	5.6	5.4
Number of houses* (2019)	7,446	75,226
Number of households (2017)	7,468	75,379
Average household size	2.1	2.2
Vacancy rate (2019)	2.4%	2.4%
Electorate (2019)	12,074	123,478
Unemployment rate (Oct 20)	4.3%	8.2%

* total dwellings

Population by age group 2019

	Number	Ward	Falkirk
		%	%
0-4	762	4.9%	4.9%
5-11	1,236	8.0%	8.9%
12-15	666	4.3%	4.9%
16-24	1,323	8.6%	9.7%
25-44	3,819	24.8%	24.4%
45-59	3,393	22.0%	23.5%
60-64	1,039	6.7%	6.3%
65-74	1,883	12.2%	9.9%
75-84	1,021	6.6%	5.6%
85+	287	1.9%	2.0%
Total	15,429	100.0%	100.0%
	No	%	
Male	7,552	48.9%	46.7%
Female	7,878	51.1%	48.6%

Estimated Population Projection

	No.	% change from 2018-19
2018-19	15,465	
2022-23	15,516	0.3%
2026-27	15,506	0.3%
2029-30	15,468	0.0%

Dwellings by council tax band 2019

Band	Ward	Falkirk	Falkirk
	No	%	%
A	2,677	35.8%	29.5%
B	1,926	25.8%	25.8%
C	639	8.6%	9.2%
D	799	10.7%	12.0%
E	694	9.3%	11.9%
F	488	6.5%	7.6%
G and H	245	3.3%	4.0%
Total	7,468	100.0%	100.0%

Dwellings 2019

	Ward	Ward	Falkirk
	No	%	%
Occupied	7,255	97.4%	97.5%
Vacant	180	2.4%	2.4%
Second Homes	11	0.1%	0.1%
Occupied dwellings exempt from paying council tax	67	0.9%	1.2%
Single Adult c tax discount (percentage of occupied)	2,786	38.4%	39.0%
	-	-	-

Dwellings by type 2017

	Ward	Ward	Falkirk
	No	%	%
Flat	1,934	26.8%	29.9%
Terraced	2,137	29.6%	23.7%
Semi detached	1,773	24.6%	22.8%
Detached and unknown	1,370	19.0%	23.5%
Total	7,214		

Benefits

Housing Benefit Claimants	Ward	Falkirk	Falkirk C.
HB with no Children	650	83.0%	83.2%
HB with 1 Child	67	8.6%	8.0%
HB with 2 Children	41	5.2%	4.7%
BH with 3+ Children*	25	3.2%	4.0%
*may be higher due suppressed data	<u>783</u>		

Unemployment October 2020

	Ward	Falkirk
	%	%
Working age population (16-64)		
Males	5.4%	9.7%
Females	6.6%	6.5%
Total	4.3%	8.2%

