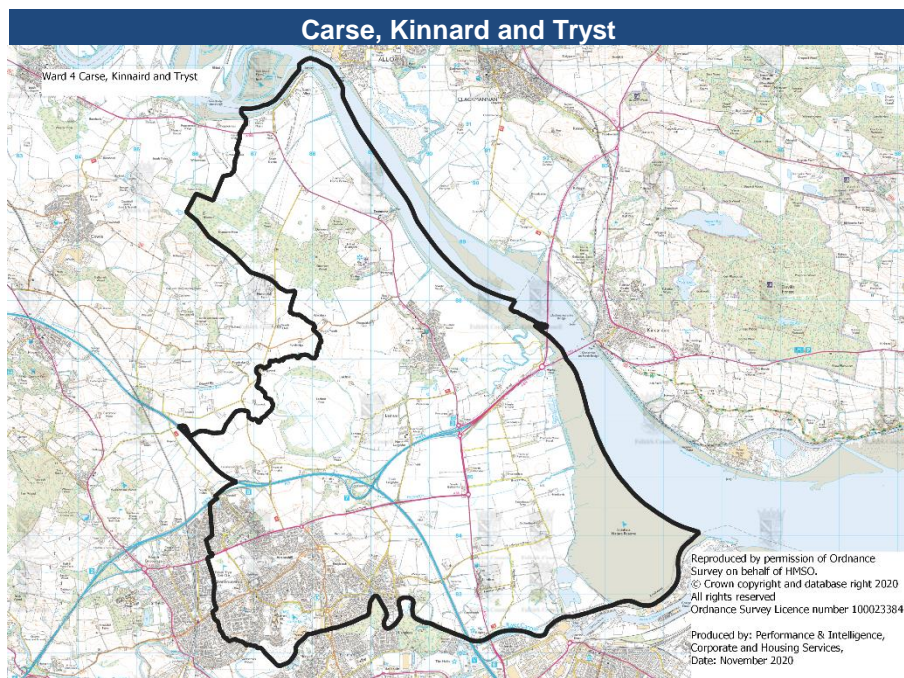


Ward 4: Carse, Kinnaird and Tryst



Insight

This insight presents key findings for Ward 4 - Carse Kinnaird and Tryst.

Basic facts

	Ward	Falkirk
Area (hectares)	3,485	31,493
Total population (2019)	21,732	168,890
Population density	6.2	5.4
Number of houses* (2019)	9,537	75,226
Number of households (2017)	9,566	75,379
Average household size	2.3	2.2
Vacancy rate (2019)	1.7%	2.4%
Electorate (2019)	16,670	123,478
Unemployment rate (Oct 20)	3.5%	8.2%

* total dwellings

Population by age group 2019

	Number	Ward	Falkirk
		%	%
0-4	1,081	5.0%	4.9%
5-11	1,940	8.9%	8.9%
12-15	1,056	4.9%	4.9%
16-24	2,068	9.5%	9.7%
25-44	5,481	25.2%	24.4%
45-59	4,969	22.9%	23.5%
60-64	1,374	6.3%	6.3%
65-74	2,179	10.0%	9.9%
75-84	1,174	5.4%	5.6%
85+	412	1.9%	2.0%
Total	21,732	100.0%	100.0%
	No	%	
Male	10,574	48.7%	46.7%
Female	11,158	51.3%	48.6%

Estimated Population Projection

	No.	% change from
2018-19	21,449	2018-19
2022-23	22,580	5%
2026-27	23,652	10%
2029-30	24,424	13%

Dwellings by council tax band 2019

Band	Ward	Falkirk	Falkirk
	No	%	%
A	1,852	19.4%	29.5%
B	2,344	24.5%	25.8%
C	1,070	11.2%	9.2%
D	1,610	16.8%	12.0%
E	1,392	14.5%	11.9%
F	613	6.4%	7.6%
G and H	686	7.2%	4.0%
Total	9,566	100.0%	100.0%

Dwellings 2019

	Ward	Ward	Falkirk
	No	%	%
Occupied	9,369	98.2%	97.5%
Vacant	160	1.7%	2.4%
Second Homes	8	0.1%	0.1%
Occupied dwellings exempt from paying council tax	85	0.9%	1.2%
Single Adult c tax discount (percentage of occupied)	3,236	34.5%	39.0%
	-	-	-

Dwellings by type 2017

	Ward	Ward	Falkirk
	No	%	%
Flat	1,552	18.0%	29.9%
Terraced	2,408	27.9%	23.7%
Semi detached	2,688	31.1%	22.8%
Detached and unknown	1,994	23.1%	23.5%
Total	8,641		

Benefits

Housing Benefit Claimants	Ward	Falkirk	Falkirk C.
HB with no Children	636	83.2%	83.2%
HB with 1 Child	62	8.1%	8.0%
HB with 2 Children	39	5.1%	4.7%
BH with 3+ Children*	27	3.5%	4.0%
*may be higher due suppressed data	<u>764</u>		

Unemployment October 2020

	Ward	Falkirk
Working age population (16-64)	%	%
Males	4.5%	9.7%
Females	5.6%	6.5%
Total	3.5%	8.2%

