

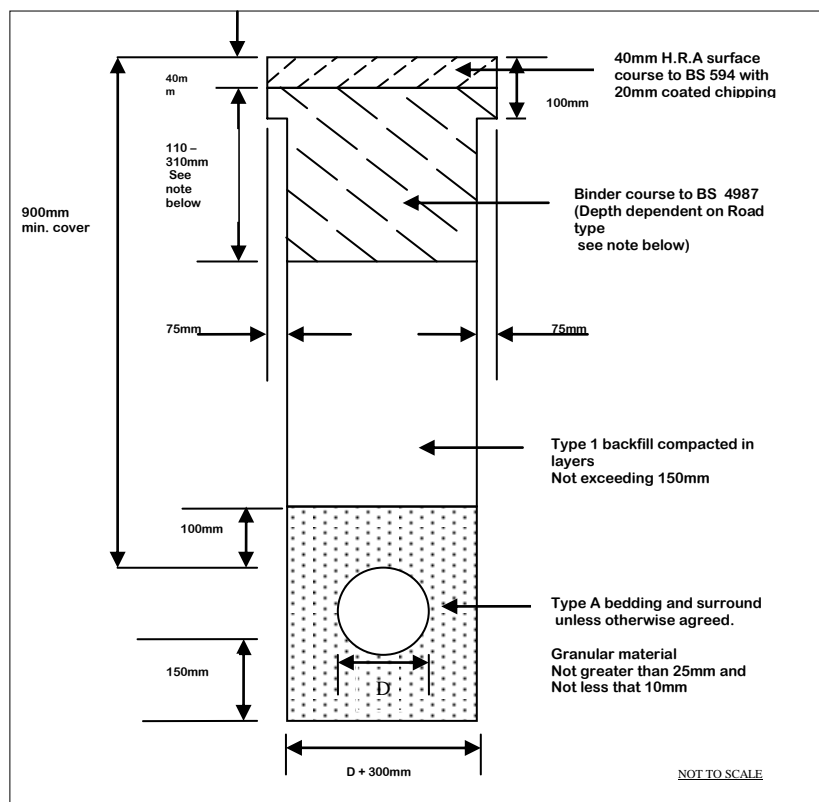
## Standard Conditions attached to this Minor Roadworks Consent

### General:

1. All work shall be carried out in accordance with the Falkirk Council Development Roads, Guidelines and Specification, or any subsequent amendment.
2. All works shall, where appropriate, be signed in accordance with Chapter 8 of the Traffic Signs Manual. *(If portable traffic lights are required you are required to complete the appropriate form)*
3. The consent-holder shall assume responsibility for claims against the Falkirk Council as a consequence of the works, both during the time that work is in progress and for a period of twelve months after the date of completion of the works.
4. The consent is valid for a period of three months from the commencement date of operations but may be extended at the discretion of the Director of Development Services.
5. **The consent-holder must notify this Service at least 7 days in advance of works commencing on site by telephone on 01324 504600.**

### Trenches:

6. No opening in the carriageway or footway shall be of greater length than 30 metres. During the progress of the work all excavations must be protected, and if not filled in during the day, must be properly lit and supervised. See Condition 2 above.
7. All excavated material is to be removed from site and the trench reinstated as shown below and the opening maintained by the consent-holder for a period of twelve months. The final reinstatement will not be less than 150mm outwith the limits of the opening and will extend beyond this to include the total area disturbed where required.



### Note:

Appropriate depth of Bindercourse Material

- Road Type 1: 310mm
- Road Type 2: 245 mm
- Road Type 3: 150 mm
- Road Type 4: 110 mm

8. No pipe, cable or duct shall have less cover than 900mm on the carriageway and 450mm on the footways

## **Vehicular Footway Crossings:**

### **The Regulations**

In accordance with the Road (Scotland) Act 1984, Section 63, when vehicles are habitually driven over a footway or verge to gain access to premises adjacent to the public road, a satisfactory vehicular crossing must be formed. Under Section 56 of the Act, Falkirk Council, as Roads Authority, may grant permission to persons wishing to carry out works within the road boundary to form an approved vehicular footway crossing.

### **Other Requirements**

1. If you are a tenant you will require your Landlord's permission to form a driveway (Local Authority, Housing Association, or private). Council tenants should contact their local One Stop Shop and request a form for "Change of Use".
2. If you are the owner of a former Council property you must determine if Burden's Consent is required (from Falkirk Council, Chief Executive Office, Governance Division, Municipal Buildings, Falkirk, FK1 5RS).
3. If the vehicular footway crossing is to be formed onto an A, B or C Class Road, then planning permission must be obtained from Falkirk Council, Development Services, Planning Section, Abbotsford House, David's Loan, Falkirk, FK2 7YZ.
4. Any structures, walls or fences may also require planning permission

### **Roads Conditions for Vehicular Crossings**

1. There shall be no obstruction over 1m in height above carriageway level within 2.5m of the carriageway edge along the frontage of your garden ground to the public road.
2. The gradient of the access shall not exceed 1 in 10.
3. The access shall be constructed at right angles to the public road.
4. Any garage shall be erected at least 5.5m back from the heel of the footway.
5. Any access gate shall be 3m wide and erected in the line of the existing fence and shall open inwards.
6. The hardstanding shall be of a sufficient length to ensure that the gates may open inwards when a vehicle is parked on the hardstanding.
7. The driveway shall be constructed so that no surface water from it will discharge onto the public road.
8. Additional conditions applicable to standard vehicular crossings from classified roads. (A, B and C Class).
  - I. Planning permission must be obtained
  - II. A vehicle turning space must be provided and maintained within the site.

As each site is unique you may wish to consult a Roads Officer regarding feasibility and any relevant conditions which may apply. Any special conditions applied to the consent must be included in the final construction.

The applicant will be responsible for any defects, which arise within 1 year of completion, or any resultant public liability from the date works commence.

### **Specification**

An extract from Falkirk Council's Development Guidelines has been provided. This shows the normal geometric layout and construction specification. (See over)

### **Construction**

It is recommended that you have the work done by a Contractor known to Falkirk Council, although this is not essential because there will be small businesses who can achieve quality work who are not known to the Council. You should ensure that your chosen Contractor is tendering in full knowledge of the specifications and conditions.

For your own protection, you should advise your Contractor that you will not pay him until the work is approved by the Council. The actual number of Contractors you ask to tender for the work is a matter of your own discretion. Upon request, Falkirk Council can provide you with details of contractors interested in carrying out this type of work.

### **Application and Consent**

You are able to apply for a Minor Roadworks Consent either before or after you have selected a Contractor. Any consent issued is valid for three months. Please ensure that any conditions attached to the consent are applied on site and that your Contractor's tender price includes for any condition which forms or affects any part of this work.

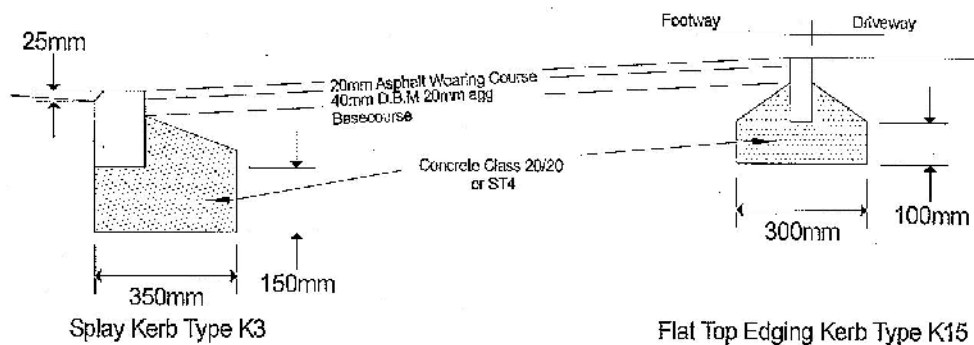
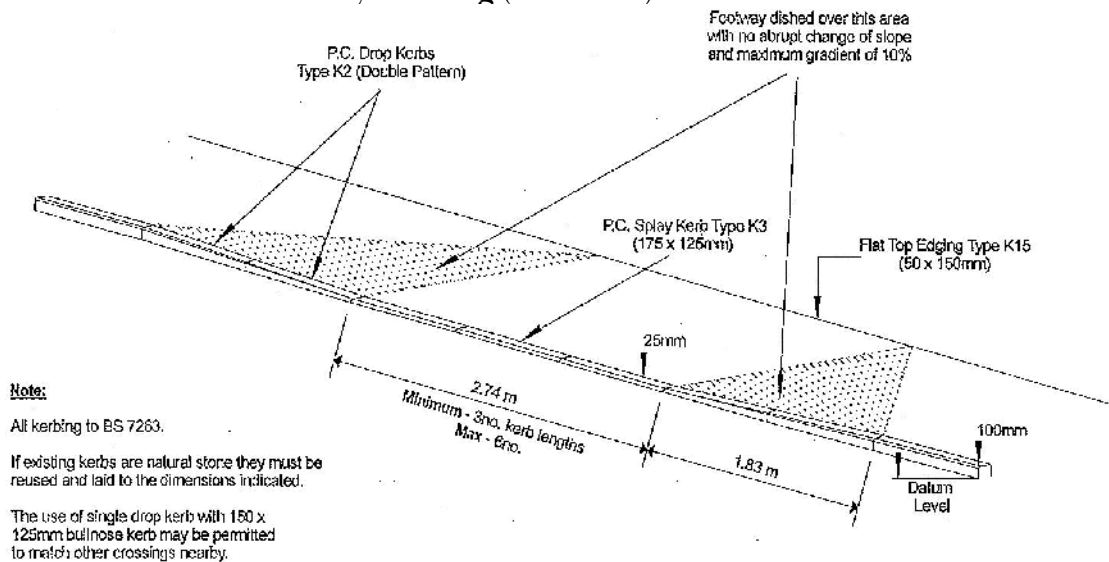
### **Supervision and Inspection**

Roads Officers must inspect the works while in progress and carry out a final inspection of the completed works. Subject to a satisfactory completion in compliance with the Specification a Certificate of Completion will be issued, on request, and the 1 year period of maintenance (guarantee) will commence.

It is a requirement, and also in the best interest of the Minor Roadworks Consent holder, to inform the Roads Officer 24 hours before the work is due to commence and provide updated information during each phase.

**Should you have any further questions please contact 01324 504610 and speak to the Network Officer.**

## Standard Vehicular Footway Crossing (not to scale)



## Footway Construction (normally to match existing footway)

### Flexible Construction

- 20mm thick 15% rolled asphalt wearing course (BS 594 Part 1, Table 6, Column 6/2) with 9mm white chippings spread at a rate of 0.5kg/sq.m. rolled into the surface. The use and quantity of white chippings may be varied to match existing footway.
- 40mm thick dense bitmac base course (BS 4987, para 2.2.6 – 20mm nominal size).
- 150mm thick Type 1 sub-base.
- 240mm thick non frost susceptible capping layer of Type 1 sub-base

### Slabbed Construction (this is not suitable for vehicles over 1.5 tonnes)

- Existing precast concrete slabs reused with any broken slabs replaced with similar slabs minimum thickness 50mm
- 25mm thick bedding layer of 6:1 whin or sharp sand/cement
- 150mm thick Type 1 sub-base.
- 240mm thick non frost susceptible capping layer of Type 1 sub-base

## Safety at Roadworks

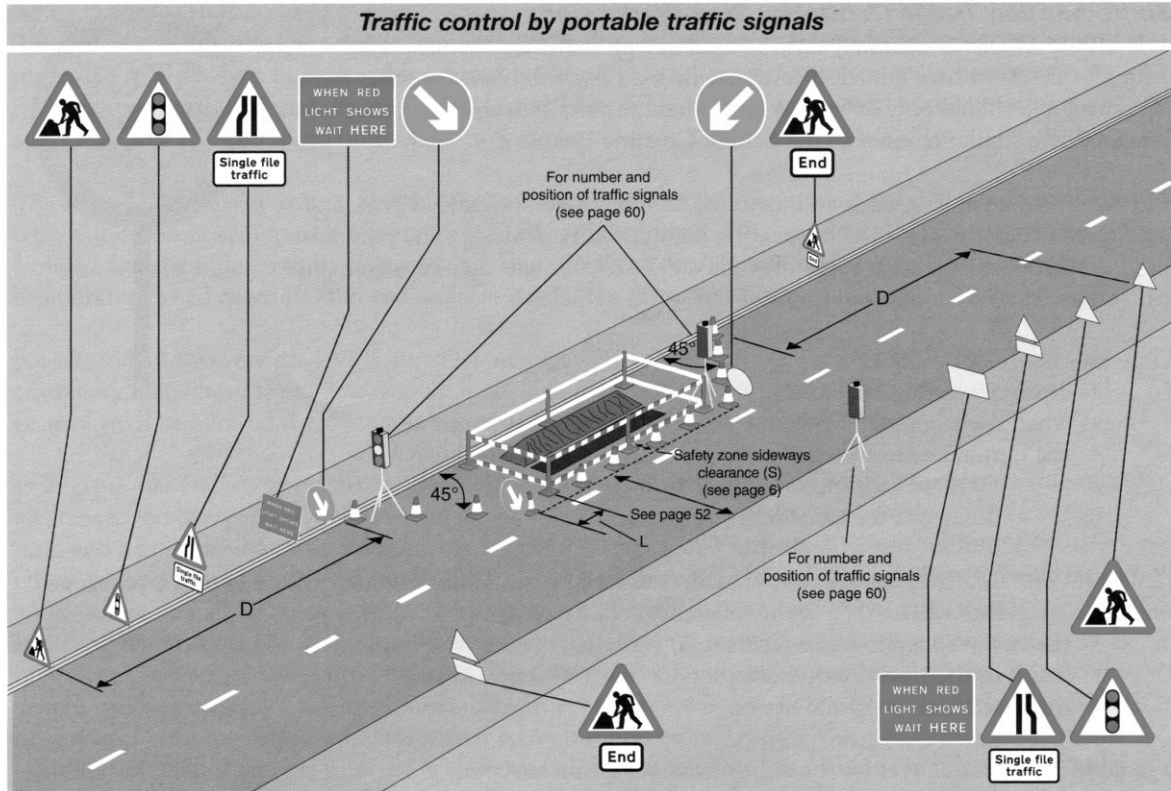
When roadworks are being carried out the law requires precautions to be taken by those carrying them out in order to protect persons using the road from danger or inconvenience. New Roads and Street Works Act 1991, The Traffic Signs and General Directions 2002, The Roads (Scotland) Act 1984, Section 57, and Health and Safety at Work Act 1974.

The under mentioned rules are not a legal interpretation but simply ten basic rules which should be adhered to so that vehicular and pedestrian traffic and those engaged in roadworks are adequately protected:-

1. Use only signs that meet the requirements of the prevailing conditions and that are prescribed in the Traffic Signs and General Directions 2002 and the Traffic Sign Manual, any amendments and extensions thereof current at the time.
2. Position the signs so that they are (a) clearly visible and (b) securely fixed so that they do not blow away.
3. Use only reflectorised signs, site them where they can, during the hours of darkness, receive the maximum benefit from street lighting and inspect regularly for damage and cleanliness. Remove or cover up signs when no longer required. Display of unnecessary signs causes confusion and frustration.
4. During one-way traffic operations use either approved **portable traffic lights\***, phased to suit traffic requirements, or manually operated Stop/Go signs. Police may control traffic, for a short duration, in a sudden emergency. (The advice of the Director of Development Services and the Police should be sought especially for heavily trafficked roads). Unless in an emergency, at least 2 months' written notice must be given to the Director of Development Services for any proposed road closure.
5. Backfill all openings as the work progresses so that the minimum inconvenience and danger is caused to traffic.
6. Do not obstruct the carriageway/footway or footpath unnecessarily with excavated material or equipment.
7. Use continuously operating amber lamps and cones around the perimeter of the work. Inspect frequently for cleanliness and efficiency.
8. Obstructions and excavations must be adequately lit and fenced. When a footpath/footway is obstructed a diversion with a handrail must be provided. Barriers must be at least 1 metre in height and special precautions should be taken so see that a blind person, using his stick, can, with safety, negotiate the obstruction.
9. All personnel engaged on works on or near the carriageway must wear a high visibility jacket or coat.
10. Ensure so far as is reasonably practicable the Health and Safety of employees and members of the public.

**\* Where portable traffic lights are to be used the applicant must complete form PSL-A. If you require a copy of this form please request one at 01324 504600. You are advised to return Form PLS-A along with the Minor Roadworks Consent application, otherwise your consent may be delayed.**

Director of Development Services  
Roads Services  
Earls Road  
GRANGEMOUTH  
FK3 8XD



For numbers and size of cones, length of lead in taper (T) and dimensions 'D', 'L' and 'S', see table below. Information boards should also be displayed (although omitted here for clarity)

**SIZE AND SITING DISTANCE: DETAILS OF SIGNS AND CONES AND SAFETY ZONE DIMENSIONS**

Type of road	Minimum and normal maximum siting distance (D) of first sign in advance of lead-in taper (metres)	Minimum clear visibility to first sign (metres)	Minimum size of signs (mm)	Minimum height of cones (mm)	Sideways Safety Zone (S)	Details of lead-in cone tapers (but see Notes below) Recommended lengths	Width of hazard (metres) including Safety Zone (S)						
							1	2	3	4	5	6	7
Single carriageway road, restricted to 30mph or less	20	60	600	450	0.5m	Length of taper (T) in metres	13	26	39	52	65	78	91
	to 45					Minimum No. of cones	4	4	6	7	9	10	12
						Minimum No. of lamps at night	3	3	5	6	8	9	11
Single carriageway road, restricted to speeds of 31 to 40mph inclusive	45	60	750	450	0.5m	Length of taper (T) in metres	20	40	60	80	100	120	140
	to 110					Minimum No. of cones	4	6	8	10	13	15	17
						Minimum No. of lamps at night	3	5	7	9	12	14	16
All-purpose dual carriageway road, restricted to 40mph or less	110	60	750	450	0.5m	Length of taper (T) in metres	25	50	75	100	125	150	175
	to 275					Minimum No. of cones	4	7	10	13	15	18	21
						Minimum No. of lamps at night	3	6	9	12	14	17	20
Single carriageway road, with speed limit of 50mph or more	275	75	750	450	1.2m	Length of taper (T) in metres	25	50	75	100	125	150	175
	to 450					Minimum No. of cones	4	7	10	13	15	18	21
						Minimum No. of lamps at night	3	6	9	12	14	17	20
All-purpose dual carriageway road, with speed limit of 50mph or more	725	105	1200	750	1.2m	Length of taper (T) in metres	32	64	96	128	160	192	224
	to 1600					Minimum No. of cones	5	9	12	16	19	23	26
						Minimum No. of lamps at night	4	8	11	15	18	22	25

Speed limit (mph)	30 or less	40	50	60	70
Minimum longways clearance (L) metres	1/2	15	30	60	100

- NOTES:
1. Lead-in tapers used with traffic control, and all exit tapers, shall be at about 45° to the kerb line with cones spaced 1.2 metres apart.
  2. The maximum spacing distance of cones in longitudinal lengths of coning shall be 9 metres, but no fewer than 2 cones shall be used in any length between tapers.
  3. In certain circumstances on congested roads with speed limits of 30mph or under, the taper may also be reduced to 45° (see page 7).