

## **Falkirk's Community Learning and Development Plan (CLD) 2021-2024**

### **INDEX**

Falkirk CLD Plan 2021-2024 is structured under the following sections:

- 1. Introduction to Falkirk's CLD Plan 2021-2024**
- 2. Falkirk's CLD Planning and the Covid-19 Pandemic**
- 3. Use of Data to Support Learner, Community and Partner Consultation, Engagement, and Involvement**
- 4. Falkirk's Shared CLD Priorities and Planning**
- 5. Falkirk CLD Plan 2021-2024 Delivery Plan**
- 6. Falkirk's Council's Unmet CLD Need**
- 7. Governance and Reporting Arrangements for Falkirk's CLD Plan**
- 8. National Strategies and Frameworks**
- 9. CLD Workforce Development**
- 10. Measuring Performance and Impact of Falkirk CLD Plan 2021-2024**
- 11. Conclusion**

### **1. Introduction Falkirk's CLD Plan (CLD) 2021-2024**

Falkirk's CLD Plan 2021-2024 builds on the previous CLD Action Plan 2018-2021. It seeks to deliver CLD activities that focus on supporting:

- Covid pandemic recovery and
- the most disadvantaged young people, adults, families, and communities within the Falkirk Council area.

Over the past 18 months, Falkirk's CLD partners have been never more needed as they strived to cope with the impact of the coronavirus pandemic. The impact of the pandemic will not be fully understood for some years. However, we do know the important and critical role that CLD partners played in supporting people living within the Falkirk Council area.

As we move forward into Covid recovery, it is even more critical that Falkirk CLD partners engage in CLD planning and delivery. Falkirk's CLD Plan 2021-2024 will help partners make best use of their collective and collaborative resources to meet the CLD needs identified by young people, adults, families, and communities within the Falkirk Council area.

Falkirk's CLD Plan 2021-2024 is a 3-year plan. However, the priorities detailed with the Plan will, in the main, be implemented in Years 1 and 2. This will allow Falkirk's CLD partners to focus on the immediacy of the pandemic recovery. By focussing on these, Falkirk's CLD partners aim to mitigate the impacts of Covid-19 and improve outcomes for disadvantaged communities to recover from the Covid-19 pandemic

### **2. Falkirk's CLD Planning and the COVID pandemic**

Falkirk Council recognises the role of the CLD partners within the public and third sectors and, importantly, within communities, in providing invaluable support to communities across Falkirk during the COVID-19 pandemic.

By developing new, innovative, creative, flexible, and impactful ways to deliver services with, by, and for vulnerable and marginalised people Falkirk's CLD partners demonstrated their resilience and leadership in a time of crisis.

Falkirk's approach during the early days of the Covid pandemic should remind us how CLD and in turn community empowerment can help people engage in learning in our communities, schools, colleges, third sector and voluntary organisations as we move to recover from the pandemic.

Falkirk's CLD partners recognise that the Covid crisis is likely to continue to present significant practical challenges to Falkirk's CLD planning. It is recognised that Covid recovery may influence future CLD planning priorities throughout 2021- 2024.

Falkirk's CLD partners recognise this and have committed time for reflection, review and collective CLD planning, particularly in Year 1 (2021-2022), of Falkirk's CLD Plan.

### **3. Learner, Community and Partner Consultation, Engagement and Involvement**

In developing Falkirk's CLD Plan 2021-2024, the Covid pandemic posed significant challenges to good quality learner and community consultation and engagement. However, Falkirk's CLD partners have built on what they already know from existing engagement with learners and from analysis of shared data.

Falkirk's CLD partners have used shared data from [Falkirk's Joint Strategic Needs Assessment](#), and from engagement with [children and young people](#) to inform actions within Falkirk's CLD Plan.

This also included data from:

- Community engagement to support the development of Falkirk's Community Plan
- Surveys undertaken to support the development of Falkirk's Community Plan
- Surveys undertaken to support the development of mental health and wellbeing projects
- Surveys undertaken by Forth Environmental Link into the community food needs within the Falkirk Council area.
- Survey undertaken by Forth Valley NHS and Falkirk's Royal Voluntary Service into the needs of older people
- Surveys into the digital skill needs of Falkirk Council CLD Service learners
- Surveys of CLD learners, partners organisations and paid staff/volunteers

Falkirk CLD Plan 2021-2024 has been developed as an integral part of Falkirk Plan 2021-2032 (LOIP). As such, Falkirk's CLD Plan aligns, as far as is possible, to the themes and priorities detailed within the Falkirk Plan. Falkirk's CLD Plan focus is on the CLD needs that arise from the implementation of outcomes and actions that are directly linked to the Falkirk Plan.

This approach has enabled appropriate linkages to be made to the Falkirk Plan themes and outcomes, together with actions contained within other plans such as Falkirk's Integrated Children's Services Plan and Falkirk Council's Closer to Communities Plan.

Community engagement was undertaken to inform the development of the Falkirk Plan 2021-2031 and Falkirk's CLD Plan 2021-2024. This included:

- Eleven place-based meetings were held across the Falkirk Council area in April 2021.
- Over 160 individuals attended the place-based meetings.

- Thematic engagement sessions involving 60 people have also been held with hard-to-reach groups to identify 'hidden' inequalities. These included:
- Minority ethnic groups
- Disabled people
- Victims of domestic abuse
- People (including family members) affected by substance use (x 4 sessions)
- Local environmental, conservation groups / volunteers

Falkirk CLD Plan 2021-2024 was also informed by the following:

- Survey of learners
- Survey of Falkirk's CLD partners
- Survey of volunteers and staff continuous professional development needs

#### Summary of the Survey of CLD Learners

**48** learners completed the survey:

- **100%** of learners agreed with Falkirk's CLD Plan priorities detailed within the survey.
- **75%** of respondents indicated that they would like to have their CLD activity delivered in a venue such as a community centre or library.
- **85%** of the respondents indicated that they would be willing participate within online and blended learning.
- Over **70%** of respondents indicated that social media and email was their preferred choice of communication about CLD activities.

#### Summary of the Survey of Falkirk's CLD Partners

**40** Falkirk CLD partners completed the survey.

- **77.5%** indicating that they had an awareness of Falkirk's CLD Plan (High awareness).
- **92.5%** of Falkirk's partners indicated that they agreed with Falkirk's CLD Plan priorities.

Falkirk's CLD partners that responded to the survey highlighted the workforce development needs and these are summarised below:

- Developing coaching skills training
- Sensory and disability awareness training
- Digital learning training
- Corporate parenting training
- Practice sharing and networking opportunities

#### Summary of the Survey of CLD Volunteers and Staff

**25** CLD staff/volunteers completed the survey. Respondents indicated that development needs had changed because of the Covid pandemic and these can be summarised in the following ways:

- Need to be more flexible and agile
- Need to respond to food and fuel poverty

- Need to support learners with anxiety and their disconnection/social isolation
- Need to support learners with mental health issues
- Need to offer digital learning solutions to learners

**72%** of those that responded to the survey were familiar with the CLD Standards Council. However, only **28%** of respondents were registered with CLD Standards Council.

#### Falkirk CLD Plan Community Representatives Reference Group

Falkirk CLD Plan community representatives reference group was also established. This involved community representatives co-producing the text for the Plan and sharing the text within their community group networks. The reference group involved representatives from:

- Bo’nett, Boness
- Tamfourhill Community Hub
- Keriebank Community Centre, Grangemouth
- Denny Community Support Group, Denny
- Westquarter Community Project, Westquarter
- Ettrick Dochart Community Hall, Hallglen

Falkirk’s CLD partners are committed to ongoing engagement with learners, communities, CLD partners and staff/volunteers. Falkirk’s CLD partners recognise that this will be an ongoing and iterative process and that Falkirk’s CLD Plan 2021/24 may be further developed as required.

#### **4. Falkirk Shared CLD Priorities and Planning**

Falkirk’s CLD partners involvement in developing shared priorities for Falkirk CLD Plan 2021-2024 has been central to the development of the CLD Plan. As Falkirk’s CLD Plan priorities and actions are directly linked to the outcomes contained within Falkirk’s Community Plan and other plans, this has meant that a greater synergy exists within the CLD planning process and priority setting.

[Falkirk’s Joint Strategic Needs Assessment](#) and Falkirk’s Community Plan identifies a few groups who face significant challenges and barriers in terms of inequality and poverty. These are:

- |   |
|---|
| <ul style="list-style-type: none"> <li>• People affected by alcohol and substance use</li> <li>• People experiencing domestic abuse</li> <li>• Young parents and lone parents</li> <li>• People experiencing poor mental health and well being</li> <li>• LGBTi young people</li> <li>• Care experienced young people</li> <li>• People who experience some form of disability</li> <li>• Individuals and families experiencing low income</li> <li>• Individuals and familiar experiencing worklessness</li> </ul> |
|---|

Falkirk’s CLD partners are committed to the provision of universal CLD services such as universal youth work. However, Falkirk’s CLD partners recognise that there is a need to target CLD support to children, young people, adults, families, and communities who face significant barriers and would most benefit from CLD.

In terms of universal services, Falkirk's CLD partners are committed to offering individuals, groups, and communities support to build their capacity, thus empowering, and enabling them, to develop and deliver universal CLD services. This approach is central to the CLD offer detailed within Falkirk's CLD Plan 2021-2024 and aligns with the outcomes detailed within Falkirk's Community Plan.

Falkirk's CLD Plan 2021-2024 details how Falkirk's CLD partners intend to offer targeted CLD services for the groups detailed above. Falkirk's CLD partners recognise that the challenges and barriers experienced by these groups cannot be alleviated solely by CLD services. However, Falkirk's CLD services can and do make a significant contribution to a broader community planning approach to addressing inequality and poverty.

## **5. Falkirk CLD Plan 2021-2024 Delivery Plan**

Falkirk CLD Plan 2021-2024 Delivery Plan is detailed within the Appendices

The Delivery Plan identifies the CLD priority actions that Falkirk's CLD partners intend to contribute to the achievement of Falkirk's Plan outcomes. Falkirk CLD Plan 2021-2024 Delivery Plan is structured in a way that it replicates the Falkirk Plan. This enables Falkirk's CLD partners to clearly identify "Falkirk's CLD offer" as a contributory approach to achieving the outcomes of the Falkirk Plan.

Falkirk's Plan themes are detailed within Falkirk CLD Plan 2021-2024 Delivery Plan, together with the intended 10-year outcomes. Falkirk CLD Plan 2021-2024 Delivery Plan also identifies the CLD outcomes and priority actions, together with CLD Network who has lead responsibility for the priority actions. It should be recognised, that the outcomes detailed within Falkirk CLD Plan 2021-2024 Delivery Plan are interconnected, and there will be actions and activity by CLD partners and communities that will contribute to multiple outcomes.

Each Network will develop their own, far more detailed, and broad delivery plan to take forward the CLD priority actions. This will aid monitoring of Falkirk CLD Plan 2021-2024 Delivery Plan and reporting progress and impact.

## **6. Falkirk's Councils Unmet CLD Need**

Prior to the Covid pandemic, Falkirk's CLD partners identified that there was limited capacity to meet the demand/need for family learning. Partners had been working collaboratively to meet this need by accessing external funding opportunities such as Pupil Equity Funding. However, it is the partners' view that this need still exists and, in some communities, may have increased due to the Covid pandemic.

Further unmet CLD needs have emerged as a direct result of the Covid pandemic. They include:

- Digital skills learning and development opportunities.
- CLD mental health and wellbeing activities.
- Youth work interventions targeting young people who are "at risk".
- Specific CLD activities for older people and disabled people.

As part of Falkirk's CLD planning process, CLD partners will regularly assess and review progress towards meeting unmet CLD need within the Falkirk Council area.

## **7. Governance and Reporting Arrangements for Falkirk's CLD Plan**

Falkirk's CLD partners recognise that it is essential that there are robust governance and reporting arrangements in place that enable effective monitoring, reviewing, and reporting impact of Falkirk's CLD Plan 2021/24.

It has been proposed, subject to Falkirk's Community Planning Partnership approval, that Falkirk's Community Learning Partnership (FCLP) will be established. FCLP will be an integral part of Falkirk's Community Planning Partnership structure, with FCLP forming part of the Community Empowerment Workstream. See Appendices for further detail.

FCLP will be supported in this work by Falkirk's Adult Learning Services Network, Falkirk Youth Services Network, Falkirk's Communities Network and Falkirk's CLD Workforce Network who will each review progress of aspects of Falkirk CLD Plan 2021/24 on an ongoing basis.

This new approach will facilitate dual ownership of the Plan by Falkirk's Community Planning Partnership and Falkirk Council. This approach will also enable regular reporting on progress of Plan through Falkirk Council's Communities Workstream and Falkirk's Community Planning Partnership Community Empowerment Workstream.

### **Formal Review of Progress**

FCLP will formally review the progress of Falkirk CLD Plan 2021/24 twice a year. This review will inform the production of an annual Falkirk CLD Plan 2021/24 report which will be produced and shared with stakeholders in October of each year for the life of the Plan. This will be made available on the Falkirk Council and other partners' websites to enable and encourage public scrutiny.

### **Formal Reporting**

On an annual basis, FCLP will report progress on Falkirk CLD Plan 2021/24 to Falkirk Council Education, Children and Young People Executive. This will take place in September of each year of the life of the Plan.

FCLP will also report annually, progress on Falkirk CLD Plan 2021/24 to Falkirk's Community Planning Board.

Falkirk's CLD Plan 2021-2024 has been equalities and poverty impact assessed to ensure the links between poverty and equality have been fully considered. The assessment identified that there was no/low disproportionate impact on any of the equality protected characteristics.

## **8. National Strategies and Frameworks**

The Scottish Government, Education Scotland and key stakeholders are drafting the following:

- Lifelong Learning Framework 2022–27
- Adult Learning Strategy 2021–2026
- Youth Work Strategy 2021-26

Work on these strategies is ongoing and they will be published in late 2021. Following publication, Falkirk's CLD partners will consider these Strategies as they will undoubtedly impact on the future priorities of Falkirk's CLD Plan 2021-2024.

## **9. Falkirk's CLD Workforce Development**

Falkirk's CLD Workforce Development needs have been identified through:

- Conversations with individual paid and voluntary staff
- Feedback from services and community groups
- Survey of Falkirk's CLD partners
- Survey of volunteers and paid staff continuous professional development needs

The identified CLD workforce development needs are detailed within Falkirk's CLD Plan 2021-2024 Delivery Plan.

### **Falkirk CLD Workforce Development Network**

- Falkirk's Community Learning Partnership are committed to establishing Falkirk's CLD Workforce Development Network. The Network will undertake an annual survey of staff and volunteers CPD needs and will produce Falkirk's Annual CLD Workforce Development Plan.
- Falkirk's CLD Workforce Development Network will actively promote membership of the CLD Standards Council.

### **Forth Valley and West Lothian Regional Improvement CLD Collaborative**

- Forth Valley and West Lothian Regional Improvement CLD Collaborative (FV & WL CLD RIC) seeks to build a collaborative culture that will support CLD practitioners in Falkirk, Stirling, Clackmannanshire, and West Lothian Council areas to focus on community learning and development practice that will improve outcomes for children, young people, families, and communities and help close the socio-economic attainment gap.
- FV & WL CLD RIC will have a key role to play in ensuring that the CLD Workforce across the Falkirk, Stirling, Clackmannanshire, and West Lothian Council have access to appropriate workforce development opportunities. All RIC partners are committed to developing a programme of continuous professional development opportunities that will meet the CLD workforce development needs of the region. This approach will build on the FV & WL CLD RIC's previous work around family learning, youth work, community development and quality improvement.

### **Regional and National Agency Support**

- Falkirk's Community Learning Partnership will work with FV & WL CLD RIC, CLD Standards Council, YouthLink Scotland, Youth Club Scotland, Young Scot, Scottish Community Development Centre, Learning Link Scotland and Scottish Adult Learning Partnership to develop a 3-year programme that meets the needs of Falkirk's CLD Workforce.

## **10. Measuring Impact and Performance of Falkirk CLD Plan 2021-2024**

Until recently, there has not been a national set of performance indicators for the CLD sector in Scotland and no mandated systems for gathering of CLD related data. Therefore, it has been challenging to establish a coherent picture of the level of CLD delivery and the impact of CLD work within the Council area.

During the last 18 months, local authority Community Learning and Development Managers have developed Key Performance Indicators (KPIs) for CLD. The purpose of the CLD KPIs is to provide an up-to-date picture of CLD activity across Scotland.

The CLD KPI's were tested nationally in December 2020/January 2021 with several of Falkirk's CLD partners participating. Partners' constructive comments were shared with CLD Managers Scotland. The first national performance information gathering survey, using the CLD KPIs, was undertaken in May 2021. The period covered in this survey was 1st April 2019 to 31st March 2020. It is recognised that the scope of this survey will not capture everything in terms of CLD delivery within the Falkirk Council area.

During the first year of Falkirk's CLD Plan 2021-2024, Falkirk Council CLD provision is committed to participate within the second national survey of CLD KPIs that will take place in May 2022. In years 2 and 3 of Falkirk CLD Plan 2021-2024, there is an expectation that the number of partners in scope of CLD KPIs survey will increase and that this will provide increased clarity on CLD activity within the Council area.

Over the lifetime of Falkirk's CLD Plan, CLD partners, including communities, will work collaboratively to develop and implement a collective impact (CI) approach. The CI approach seeks to clearly identify the transformational change that takes place within communities as a direct result of actions detailed within the CLD Plan.

## **11. Conclusion**

The implementation of Falkirk's CLD Plan 2021-2024 offers an opportunity to Falkirk's CLD partners and communities to respond to the challenges of the Covid pandemic. The CLD Plan has enabled Falkirk's CLD partners to clearly identify "Falkirk's CLD offer" as a contributory approach within Falkirk Council and Falkirk's Community Planning Partnership. Falkirk's CLD partners and staff/volunteers have critical and vital role to play in rebuilding from the pandemic and responding to the new challenges ahead. In particular, the role that Falkirk's CLD partners will play in engaging people in learning and development in Falkirk communities, schools, colleges, third sector and voluntary organisation. This process will contribute to empowering people and communities to recover from the pandemic

### Falkirk CLD Plan Community Representatives Reference Group

The following community representatives were involved in co-producing Falkirk's CLD Plan 2021-2024:

- Maria Ford, Bo'nett, Boness
- Lynne Boslin, Tamfourhill Community Hub
- Lyn McNeil, Kersiebank Community Centre, Grangemouth
- Louise Hay, Denny Community Support Group, Denny
- Sylvia Bradley, Westquarter Community Project, Westquarter
- Sylvia Kay, Ettrick Dochart Community Hall, Hallglen



## **Falkirk CLD Plan 2021-2024 Delivery Plan**

### Local and National Outcomes

The Scottish Government's [National Performance Framework](#) sets out the outcomes for the kind of Scotland it aims to create. The Falkirk Plan sets out the local outcomes for the people of Falkirk, which contribute to achieving these goals for Scotland. The Falkirk's Plan contains themes and outcomes that the Plan seeks to achieve over the next 10 years.

### Tackling Inequalities and Reducing Deprivation

The goal of Falkirk Council and Falkirk's Community Planning Partnership is to tackle inequalities and reduce deprivation across the Falkirk Council area. Falkirk CLD Plan 2021-2024 Delivery Plan details how Falkirk's CLD partners plan to contribute to this goal over the next 3 years.

### Contributory Approach of Falkirk's CLD Offer

Falkirk CLD Plan 2021-2024 Delivery Plan identifies the CLD priority actions that Falkirk's CLD partners intend to contribute to the achievement of Falkirk's Plan outcomes. Falkirk CLD Plan 2021-2024 Delivery Plan is structured in a way that it replicates the Falkirk Plan. This enables Falkirk's CLD partners to clearly identify "Falkirk's CLD offer" as a contributory approach to achieving the outcomes of the Falkirk Plan.

Falkirk's Plan themes are detailed within Falkirk CLD Plan 2021-2024 Delivery Plan, together with the intended 10-year outcomes. Falkirk CLD Plan 2021-2024 Delivery Plan also identifies the CLD outcomes and priority actions, together with CLD Network who has lead responsibility for the priority actions. It should be recognised, that the outcomes detailed within Falkirk CLD Plan 2021-2024 Delivery Plan are interconnected, and there will be actions and activity by CLD partners and communities that will contribute to multiple outcomes.

Each Network that is leading a priority actions has, or is developing their own, far more detailed, and broad delivery plan to take forward the actions. This will aid the monitoring of Falkirk CLD Plan 2021-2024 Delivery Plan desired outcomes and reporting progress and impact.

### Links to other Contributory Plans and Strategies

Falkirk CLD Plan 2021-2024 Delivery Plan details links to other contributory plans and strategies at the end of the Delivery Plan.

<b>Falkirk Plan Theme</b>	<b>Falkirk Plan 10 Year Outcome</b>	<b>Falkirk's CLD Plan Outcome</b>	<b>Falkirk's CLD Plan Priority Actions</b>	<b>Lead Responsibly</b>	<b>Timescale</b>
Working in Partnership with Our Communities	Communication with our communities is improved.	Individuals and communities report that CLD partners are effectively communicating with them.	Create a Falkirk's CLD Plan 2021-2024 section on Falkirk's Community Planning website where people can learn about Falkirk's CLD Plan, its progress, and get involved and participate within iterations of Falkirk's CLD Plan priorities.	Falkirk's Communities Network	2021-2022
	Community-led organisations are stronger and more independent	Communities report that they feel more resilient, inclusive	Offer community capacity support programme to community groups and community networks to enable them to form anchor organisations across the Falkirk Council area.	Falkirk's Communities Network	2021-2023
		Communities report that they feel confident and competent in seeking and securing investment to support their work.	Work with community groups and community networks to raise their awareness of funding opportunities and offer capacity building support that enables them to apply for funding.	Falkirk's Communities Network	2021-2023
		Communities report that they feel confident and competent in delivering youth work project and programmes.	Work with local communities to support them to develop and deliver youth work projects and programme.	Falkirk's Youth Services Network	2021-2024
		CLD partners' staff, volunteers, and community members report that their leadership capacity has improved.	Develop training opportunities for CLD partners' staff, volunteers, and community members to enable them to develop their leadership and coaching capacity	Falkirk's CLD Workforce Development Network	2021-2024
	More decisions are made together at a local level	Community members report that they have increased capacity, resources, assets and knowledge that enables them to participate effectively within local decision making.	Offer an annual capacity building support programme for community members that enables them to participate effectively within local decision making, including Falkirk's Community Choices Initiative.	Falkirk's Communities Network	2021-2024
		Individuals and community groups report that they feel valued and included.	Develop an annual CLD event that celebrates the contribution of individuals and community groups have made to	Falkirk's Communities Network	2021-2024

			community life within the Falkirk Council area.		
	Social, community and economic planning focuses on place, and reflects the needs and aspirations of the people that live there	Community members report that they feel included in the pilot Place-Based Investment Framework and that plans reflect their needs and aspirations.	Support community members to participate within a pilot Place-Based Investment Framework in Grangemouth and Falkirk.	Falkirk's Communities Network	2021-2023

Poverty	People of all ages have equal opportunity to access digital services and have the skills and confidence to safely participate online.	Participants within digital skills learning and development opportunities report their digital skills have improved and that they now feel digitally included.	Develop a Digital Inclusion Project that targets older people, people with disabilities, people experiencing social isolation, ethnic minority groups and children, young people and families who live in the most deprived areas and are from priority groups.	Falkirk's Adult Learning Services Network	2021-2023
		CLD partners staff and volunteers report that their digital skills and use of digital platforms have improved.	Develop training opportunities for CLD partners' staff and volunteers that enable them to improve their digital skills and use of digital platforms effectively.	Falkirk's CLD Workforce Development Network	2021-2023
Children and young people have equal access to participate.	Children and young people report that they can now access activities and that their health and wellbeing has improved as a result.	Participants within the pilot project report that they can now access activities and that their health and wellbeing has improved as a result.	Develop a pilot project that seeks to support young parents, young carers, and young people from low-income households to access to leisure, sporting, cultural and heritage activities.	Falkirk's Youth Services Network	2021-2023
		Children and young people report that they are supported to participate within the co-design and co-production of services.	Work with children and young people to develop Falkirk's approach to supporting their participation in the co-design and co-production of services.	Falkirk's Youth Services Network	2021-2023
		Children and young people report that they feel that their rights are respected within the Falkirk Council area.	Work with children and young people to develop a "rights respecting Falkirk Council area."	Falkirk's Youth Services Network	2021-2023
		Learners and CLD partners report that accreditation and progression pathways have improved.	Develop existing youth work, ESOL, digital skills and literacies provision to ensure learner maximise their accreditation and progression to volunteering, training, education, and employment.	Falkirk's Adult Learning Services Network	2021-2023
		Individuals and families affected by poverty have access to joined-up, multi-agency support services, and know how and where to access them.	Individuals and families report that Falkirk's CLD services met their needs.	Develop family learning programmes with all school cluster areas that targets families who would most benefit from this opportunity.	Falkirk's Adult Learning Services Network
	Learners and CLD partners report that accreditation and	Develop existing youth work, ESOL, digital skills and literacies provision to maximise learner accreditation and	Falkirk's Adult Learning Services Network	2021-2023	

		progression pathways have improved.	progression to volunteering, training, education, and employment.		
	Fewer people struggle with the costs of food, fuel, and transport.	Community groups report that they feel confident and competent in their capacity to provide food to families who live in the most deprived areas and to priority groups.	Work with community groups to further develop their capacity to provide food to families who live in the most deprived areas and to priority groups.	Falkirk's Communities Network	2021-2024

Mental Health and Wellbeing	There are fewer deaths due to suicide.	Individuals and community groups report that they feel confident and competent in their capacity to provide support to people experiencing mental health issues.	Develop an annual mental health awareness raising programme, including referral routes for community groups and community networks.	Falkirk's Communities Network	2021-2024
	Children and Young people's mental health services are well-resourced and have reduced waiting times.	Children and young people report that they have supported to co-design support services.	Develop a Young People's Mental Health and Employability Research Project that aims to support young people to co-design employability services.	Falkirk's Youth Services Network	2021-2022
	People struggling with their mental health can access support early in their journey, and services will adopt a whole-person approach.	Participants report that their feelings of mental health and wellbeing has improved as a direct result of being involved in the project.	Support the development of a mental health and wellbeing project (VIVA) that aims to promote health and wellbeing within 4 communities (Denny, Hallglen, Grangemouth and Langlees/Bainsford).	Falkirk's Communities Network	2021-2024
		CLD partners' staff, volunteers and community members report that they feel confident and competent in supporting people experiencing mental health issues.	Deliver training opportunities to CLD partners' staff, volunteers and community members to enable them to support individuals confidently and competently with their mental health and wellbeing issues.	Falkirk's CLD Workforce Development Network	2021-2023
		CLD partners' staff, volunteers and community members report that they feel confident and competent to deliver outdoor learning.	Deliver training opportunities for CLD partners' staff, volunteers, and community members to enable them to develop outdoor learning skills/approaches.	Falkirk's CLD Workforce Development Network	2021-2023
	Fewer people struggle with feeling socially isolated or lonely.	Participants report that their feelings of social isolation and loneliness have reduced as a direct result of being involved in the projects.	Develop 6 projects for young parents, older people and people with disabilities that seek to reduce feelings of social isolation and loneliness.	Falkirk's Youth Services Network and Falkirk's Adult Learning Services Network.	2021-2023
		Participants accessing supported volunteer programmes report that their mental health and wellbeing has improved as a result.	Further develop supported volunteer programmes for people with disabilities or other additional needs that pose a barrier to engaging with volunteering.	Falkirk's Communities Network	2021-2023

Substance Use	There are fewer drug-related deaths.	Individuals and community groups report that they feel confident and competent in their capacity to provide support to substance users, including alcohol.	Develop an annual substance use awareness raising programme, including referral routes for community groups and community networks.	Falkirk's Communities Network	2021-2024
	Families affected by substance use are enabled to overcome issues related to stigma which prevents access to support.	Individuals who attend community-based recovery café services report that they feel that they have the right to access CLD services that meet their needs.	Support the development of community-based recovery café services with Stenhousemuir, Denny, Grangemouth and Bainsford/Langlees.	Falkirk's Communities Network.	2021-2024
	Fewer young people choose to use substances.	Community groups report that they feel confident and competent in their capacity to respond to substances use issues, including the misuse of alcohol.	Offer an annual community capacity building support programme to community groups wishing to respond to substances use issues, including the misuse of alcohol.	Falkirk's Communities Network.	2021-2024
		Participants report that their wellbeing has improved as a direct result of being involved in the programme of activities.	Develop a programme of school holiday activities that promote positive health and wellbeing with young people and families who live in the most deprived areas and/or are in a priority group.	Falkirk's Communities Network.	2021-2024
		Participants report that they can now make informed choices about their health and wellbeing.	Develop 4 creative community arts projects for young people and adults that focus on the risk-taking behaviours that are most relevant to either young people or adults.	Falkirk's Youth Services Network and Falkirk's Adult Learning Services Network.	2022-2023
	There is reduced stigma related to substance use.	People who choose to use substances report that stigma has reduced.	Participate in the Bringing Addiction Stigma to an End (#QuitStigmaNow) Campaign. <a href="https://www.dianova.org/campaigns/bringing-addiction-stigma-to-an-end/">https://www.dianova.org/campaigns/bringing-addiction-stigma-to-an-end/</a>	Falkirk's Communities Network	2021-2024
		CLD partners' staff, volunteers and community members report that their understanding of the impact of stigma related to substance use has improved.	Deliver an annual programme of CPD opportunities that improves CLD staff, volunteers and community members understanding of the impact of stigma related to substance use.	Falkirk's CLD Workforce Development Network	2021-2024

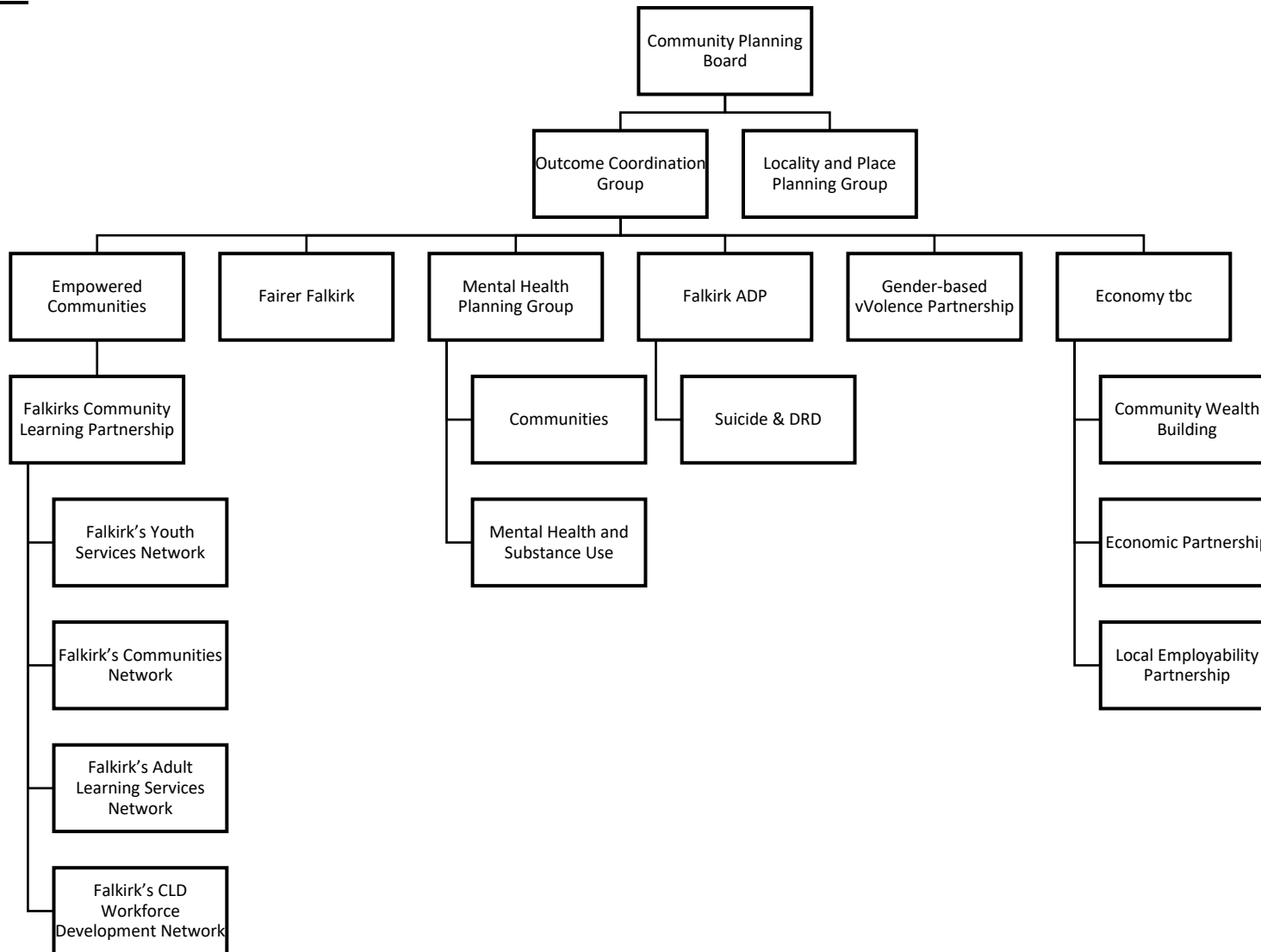
		CLD partners' staff, volunteers, and community members report that their knowledge of approaches to promoting mental health and wellbeing has improved.	Deliver training opportunities to CLD partners' staff, volunteers, and community members to enable them to develop their approaches to promoting mental health and wellbeing.	Falkirk's CLD Workforce Development Network	2021-2024



Gender-Based Violence	Interventions for those experiencing, or at-risk of domestic abuse are early, effective, and inclusive.	CLD partners who work directly with those experiencing, or at-risk of domestic abuse report that services are inclusive and accessible.	Deliver CLD activities that are inclusive and accessible to those experiencing or at-risk of domestic abuse	Falkirk's Communities Network	2021-2024
	Victims of domestic abuse receive a joined-up offer of help until they are supported to safety.	Victims of domestic abuse and CLD partners report that accreditation and progression pathways have improved.	Develop CLD provision to ensure victims of domestic abuse maximise their accreditation and progression to volunteering, training, education, and employment	Falkirk's Adult Learning Services Network	2021-2023
	Front line staff have an increased awareness of issues related to domestic abuse and gender-based violence.	CLD partners' staff and volunteers report that their understanding of and responses to domestic abuse and gender-based violence have improved.	Deliver CPD opportunities that improve CLD partners' staff and volunteers understanding of and responses to domestic abuse and gender-based violence.	Falkirk's CLD Workforce Development Network	2021-2024
	Men who carry out violence against women and girls are identified early and supported to change their behavior.	CLD partners' staff and volunteers report that they feel that they have become more domestic violence informed.	Deliver Safe and Together training that provides a skills-oriented foundation for domestic violence-informed practice for CLD partners' staff and volunteers	Falkirk's CLD Workforce Development Network	2021-2024

Economic Recovery	More wealth is retained within local communities and economic growth is inclusive.	CLD partners will offer capacity building support to individuals and communities wishing to participate in the development of an inclusive growth strategy for the Falkirk Council area.	Develop a test project in the Denny area that seeks to reduce the economic leakage and then share the impact of the project with other communities.	Falkirk's Communities Network	2021-2024
		Community members report that they have increased capacity, resources, assets, and knowledge that enables them to participate effectively within Community Wealth Building assessments.	Offer community capacity building support to community members who wish to participate effectively within the assessment of Falkirk's communities using the principles of Community Wealth Building.	Falkirk's Communities Network	2021-2024
	Following the declaration of a National Climate Emergency the Partnership is leading Falkirk's contribution to Scotland's target to be net-zero by 2045 through a focus on green recovery.	Young people report that they feel they have a voice when it comes to climate campaigning.	Support young people to get involved with climate campaigning and activities around COP26.	Falkirk's Youth Services Network	2021-2024
		Community groups report that they have increased capacity, resources, assets, and knowledge that enables them to develop a plan to achieve the target to be net-zero by 2045.	Offer community capacity building support to community groups who wish to take on community ownership/lease projects with a view to achieving the target to be net-zero by 2045.	Falkirk's Communities Network	2021-2024
	People have equal access to education, training and employment that supports the local labour market.	CLD partners report that the numbers of people, who are disproportionately impacted by the COVID pandemic and who have engaged in employment and training support, has increased.	Improve engagement and access to training and employment support for those disproportionately impacted by the COVID pandemic (Inc long term unemployed, redundancy)	Falkirk's Adult Learning Services Network	2021-2024
		CLD partners report that the numbers of people, who are from priority groups and who have engaged in employment and training support, has improved.	Improve the engagement access and opportunities to training and employment support for priority groups e.g. low income, lone parents, ethnic minorities	Falkirk's Adult Learning Services Network	2021-2024

**Appendix 2: Falkirk’s Community Planning and Falkirk’s Community Learning Partnership Governance and Arrangements**



**Appendix 3: Falkirk's CLD Plan 2021-2024 links to the following related Plans and contributory strategies:**

**Falkirk's Local Plans and Strategies**

[CVS Strategy](#)

[Towards a Fairer Falkirk 2019 - 2024](#)

[Local Child Poverty Action Report 2020-21](#)

Falkirk Council Rapid Rehousing Transition plan

Falkirk Council Integrated Children's Services Plan

[Falkirk HSCP Strategic Plan 2019-2022](#)

[Falkirk Council Corporate Plan 2020-22](#)

[Falkirk Council Business Plan 2021-24](#)

[Falkirk Council Digital Falkirk](#)

[Falkirk HSCP Strategic Plan 2019-2022](#)

Mental Health Planning Group Suicide and Drug-related Death Action Plan

Mental Health Planning Group Substance Use and Mental Health Action Plan

[Falkirk Alcohol and Drug Partnership Delivery Plan 2020-23](#)

Suicide and Drug-related Death Subgroup Action Plan

Substance Use and Mental Health Action Plan.

NHS Forth Valley Health Improvement Strategy 2017-2021

Forthcoming NHS Forth Valley Tobacco Strategy

[Falkirk Economic Strategy 2015-25](#)

[Falkirk Economic Partnership Economic Recovery plan 2020-22](#)

Falkirk Council Tourism Strategy

Falkirk Council Local Development Plan

Falkirk's Children's Rights and Engagement Plan

## **National Plans and Strategies**

[Community Empowerment Act 2015](#)

[National Performance Framework](#)

[Community Learning and Development Plans](#)

[CLD Plans Guidance Note \(2021-2024\)](#)

[Curriculum for Excellence](#)

[No One Left Behind](#)

[Getting it Right for Every Child – Wellbeing Indicators](#)

[National Standards for Engagement](#)

[United Nations Convention of Rights of the Child](#)

[Family Learning Framework](#)

National Youth Work Strategy (currently being reviewed)

Adult Learning Strategy (currently being reviewed)

[New Scots Strategy](#)

[Scottish Government Mental Health Strategy 2017-27](#)

[Equally Safe- Scotland's Strategy to Prevent and Eradicate Violence Against Women and Girls](#)

**Appendix 4: Falkirk’s CLD partners who have been involved in developing Falkirk’s CLD Plan 2021-2024 are detailed below:**

1	Forth Valley Migrant Support
2	Falkirk Community Trust
3	Kinneil Band, Bo’ness
4	Maddiston Community Council
5	Dates and Mates, C-Change
6	Grangemouth Old Peoples Welfare
7	Forth Environment Link
8	Carronshore Heritage Forum
9	Central Scotland Regional Equality Council
10	Our Place, Camelon and Tamfourhill
11	Go Youth Trust, Falkirk
12	Maddiston Evangelical Church
13	Change, Grow, Live, Forth Valley Recovery Service
14	Carr Gomm
15	Denny Community Support Group, Denny
16	MCR Pathways
17	Denny Wider Access to School Project, Denny
18	Education Services, Children’s Services, Falkirk Council
19	Social Work Services, Children’s Services, Falkirk Council
20	Development Services, Falkirk Council
21	Employment and Training Unit, Falkirk Council - ETU
22	Leaving Care Team, Children’s Services, Falkirk Council
23	Corporate and Housing Services, Falkirk Council
24	Young Scot
25	Salvation Army

30	Carriden Community Volunteer Group
31	Central Carers, Falkirk
32	Friends of Scottish Settlers (FOSS)
33	Forth Valley College, Falkirk Campus
34	Department of Work and Pensions
35	CVS Falkirk and District
36	Quarriers
37	Barnardos
38	Workers Education Association
39	Falkirk’s Health and Social Care Partnership
40	NU2U Furniture Project CIC
41	NHS Forth Valley
42	Bo’net, Bo’ness
43	Royal Voluntary Service
44	Westfield Park Community Centre Management Committee
45	Key Housing Association
46	Link Living
47	The Storehouse Foodbank, Bo’ness
48	Paragon Housing Association
49	NHS Forth Valley
50	Strathcarron Hospice
51	Aberlour Child Care Trust
52	The Conservation Volunteers (TCV), Falkirk
53	Westquarter Community Project Management Committee, Westquarter
54	Ettrick Dochart Community Hall Management Committee, Hallglen

26	Corra Foundation
27	Cyrenians
28	Forth Valley Sensory Centre, Falkirk
29	LGBT Youth

55	Tamfourhill Community Hub Management Committee, Tamfourhill
56	Kersiebank Community Centre, Grangemouth
57	Youth Scotland